

**GRAVITY**

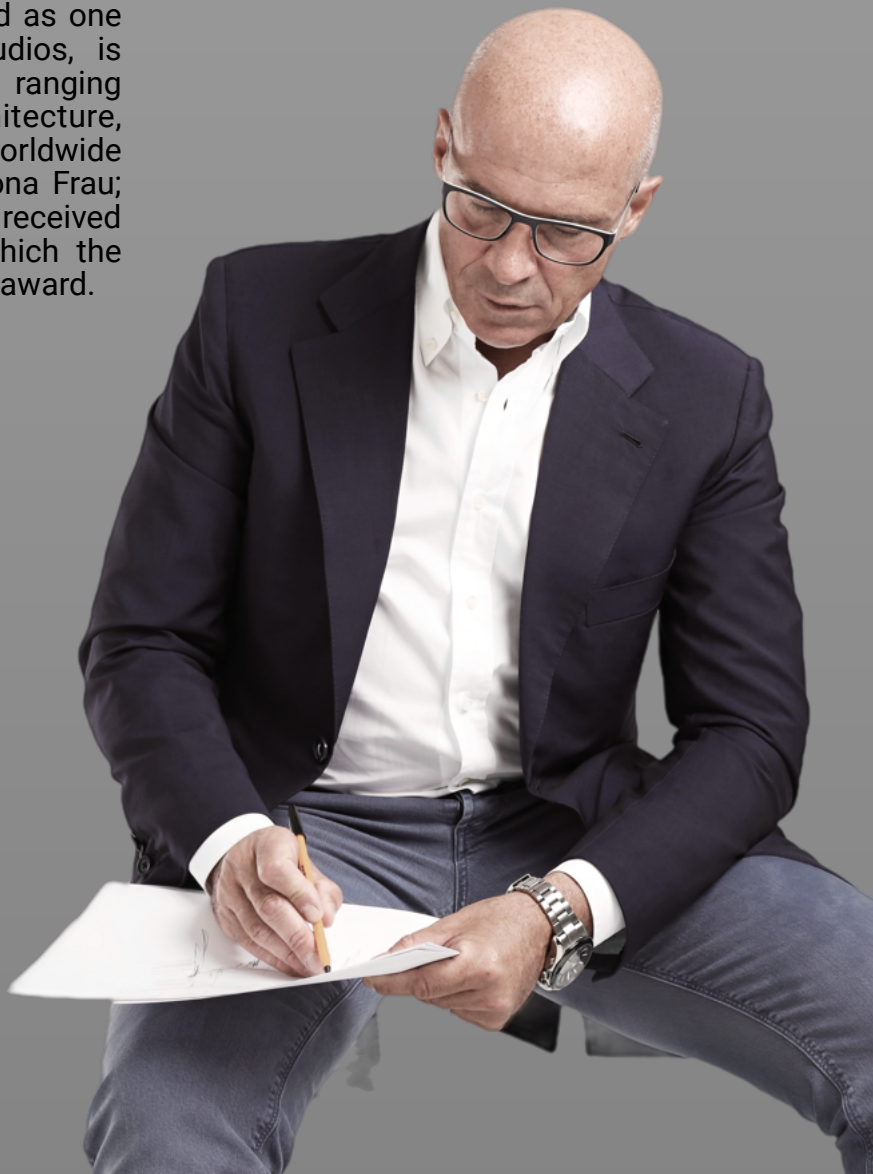


# CLAUDIO BELLINI

Claudio Francesco Bellini (1963) is living and working in Milan, where he graduated in Architecture and Industrial design at the renowned Politecnico university in 1990.

His strong fascination with creativity, is rooted in his early childhood years, inspired by his father Mario Bellini, whom counts as one of the most affluent figures in design history.

Today Claudio Bellini Design, recognized as one of the most influential European studios, is active within several fields of design, ranging from furniture to product and architecture, collaborating with leading companies worldwide including Walter Knoll; Steelcase; Poltrona Frau; Riva 1920. Many of its creations have received international design awards, among which the prestigious Red Dot, IF and Good design award.



A stylized, handwritten signature in black ink, likely reading 'Claudio Bellini'.



**GRAVITY**

**D** innovative  
DESIGN





## PERFORMANCE

Gravity Chair Characterized By Sharp Clean Lines, Well-Balanced Proportions, And Functionality. It Has A Soft Pad Lumbar Support, 3D Adjustable Armrests And Wide Range Adjustable Headrest To Provide Better Ergonomic Application. The Aesthetics Of The Chair Was Inspired By The Dynamism Of Automotive Design With Mixture Of Smooth And Sharp Lines.

## USE

Various Configurations And Textile Combinations Makes Gravity Chair Suitable For All Areas Of The Workplace, Or Even At Your Home Office.



## DESIGN CONCEPT

The Main Concept Is A Combination Of Mesh Backrest And Soft Pad In A New And Innovative Way. The Mesh Gives All The Advantages Of A Light Material Which Is Comfortable Yet Breathable, An Element To Enhance The User's Sitting Experience.

The Optional Soft Pad In A Lumbar Area Provides Extra Sitting Comfort Sensations. Well Refined Balance Between The Sharpness Of Each Curve And Contour Angles. Gravity's Elegant Silhouette Is Visually Pleasing In Any Office Environment.



## STANDARD FEATURES

- Medium Mesh Back in graphite poly with white reveal
- Upholstered Seat
- High Density / High Resiliency Flexible Foam
- Synchro Tilt Mechanism
- Multi-Position Tilt Lock
- 3D Armrests
- Grey Base With Casters
- Class 4 gas cylinder
- Meets & Exceeds ANSI/BIFMA x5.1

## OPTIONS

- Seat Slider / Seat Depth Adjustment
- Donati – Dopo Weight Active Mechanism
- 18 Position Adjustable Headrest (in Faux Leather)
- Lumbar Support Panel (Upholstered)
- Painted White Aluminum Package
- Fixed Base with Auto Homing / Auto Return

**GRAVITY**





**Mesh Back With Headrest - Grey Frame**



**Hybrid Mesh Back Height - Grey Frame  
With Panel Lumbar Support**



**Cantilever Sled Base Visitor Chair**



**GRAVITY**



# CUSTOMIZE IT

## 1. ARMREST OPTIONS



Standard Grey or Black



White Painted Aluminum

## 2. BASE OPTIONS



Standard Grey Poly



Standard Black Poly



White Aluminum



Fixed White Aluminum

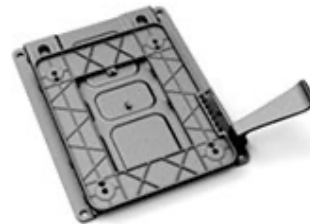
## 3. MECHANISM OPTIONS



Standard Basic  
Synchro Tilt



Optional DOPO Weight  
Activated Mechanism

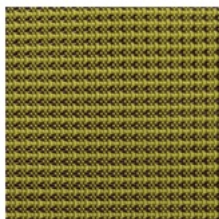


Optional Seat Slider

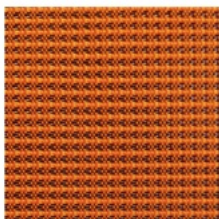


# GRAVITY

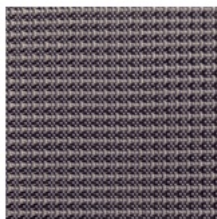
## BACK MESH COLORS



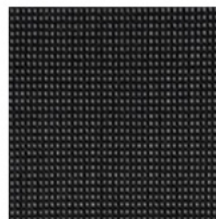
FB1902  
GREEN



FB1901  
ORANGE



FC1904  
GREY



FB1905  
BLACK

## LUMBAR SUPPORT FABRIC



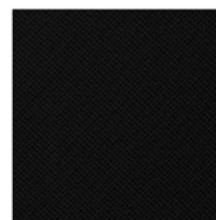
FC1707  
GREEN



FC1702  
ORANGE



FC1708  
GREY



FC1709  
BLACK

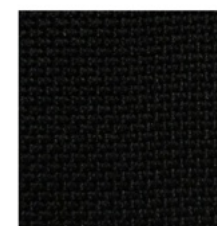
## SEAT UPHOLSTERY



FC1801  
GREEN



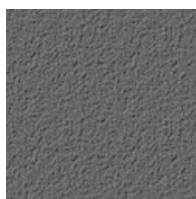
FC1802  
DARK GREY



FC2001  
BLACK

WHAT'S  
YOUR  
FLAVOR  
FAVE?

## FRAME COLORS

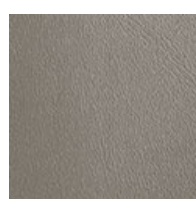


GREY

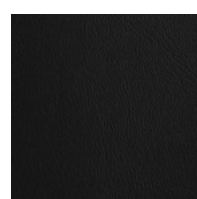


BLACK

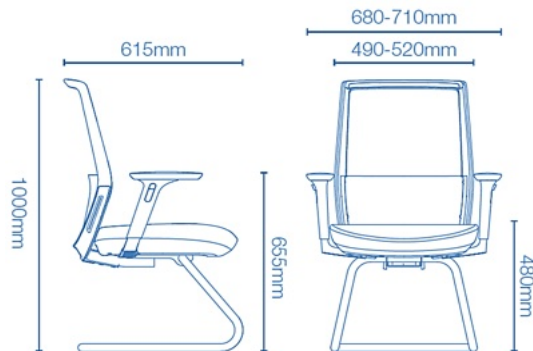
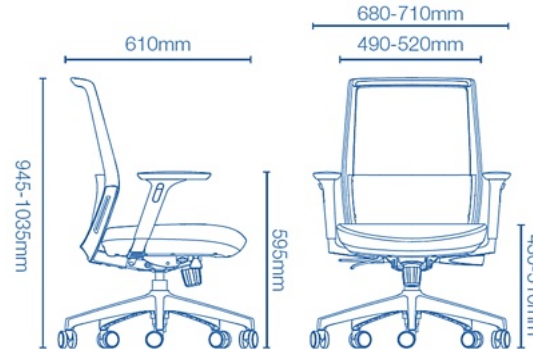
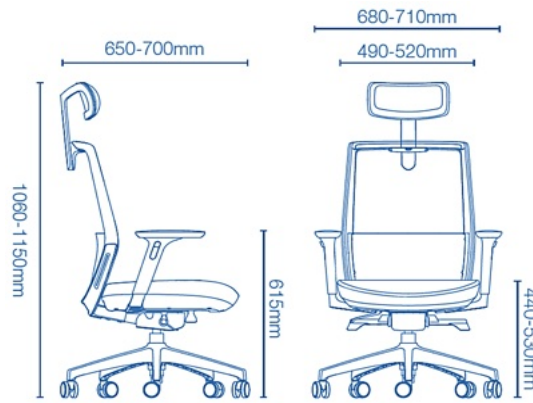
## HEADREST UPHOLSTERY



PU0401 GREY



PU0403 BLACK



# GRAVITY

## Shipping

20 Foot		169 Chairs
40 Foot		348 Chairs
40 Foot HQ		400 Chairs

## Packaging

81cm x 33cm x 66cm

## Weight

Net Weight: 21.0 Kgs.  
Gross Weight: 23.6 Kgs.



[www.axessoem.com](http://www.axessoem.com)

4641 Stag Thicket Ln.  
Brunswick, Ohio 44212 (USA)

T: +1 (330) 460-4840

[general@axess-int.com](mailto:general@axess-int.com)

