

uno  
COLLECTION



When Performance Matters



## Make work fun!

Our Next Generation UNO Is a Perfect Complement to the Lab or Office Space. It Promotes Functionality, Comfort, Interaction and Creativity of Traditional Seating UNO Is Compact, Lively and Expressive, Which Not Only Promotes Creative Collaboration, but Also Makes the Space Full of Vitality.

Aesthetically Pleasing Yet Rugged in Nature Makes UNO Perfect for a Variety of Use Environments Including Education, Labs, Office, and Many More. Contract Furnishings Are Specifically Designed To Meet the Particular Requirements. UNO Is Specifically Designed To Meet the Challenge.







# unho

STOOLS





### Features & Options

- Upholstered Seat & Back (Optional Faux Leather)
- Molded High Density Foam
- Height Adjustable Seat
- Height Adjustable Back Rest
- Available in Task & Stool Configuration
- Stool Base Includes a Polymer Foot Ring (Standard)
- Optional Polished Aluminum Door Ring
- Class 4 Pneumatic Gas Lift Cylinder
- Polymer Nylon Base With Non-Slip Casters
- Shell in Standard Black or Optional Egg Shell White
- (4) Standard Contract Grade Upholstery Fabrics
- Meets & Exceeds ANSI/BIFMA X5.1 Standards



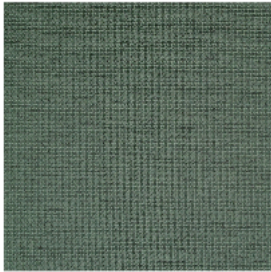
BLACK SHELL



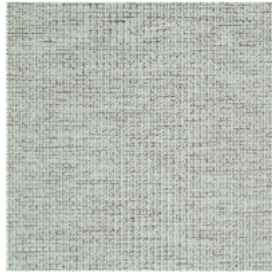
BLACK SHELL



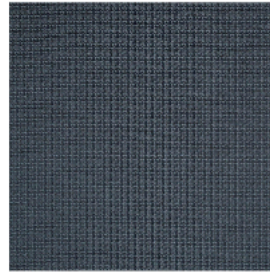
FABRIC UPHOLSTERY



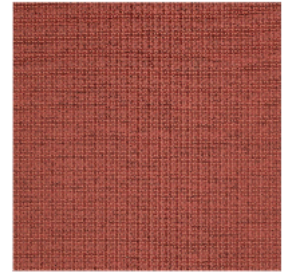
FC3101 Green



FC3102 Light Grey



FC3103 Dark Grey



FC3104 Orange

SHELL COLORS



Black



White

BASE COLORS



Black



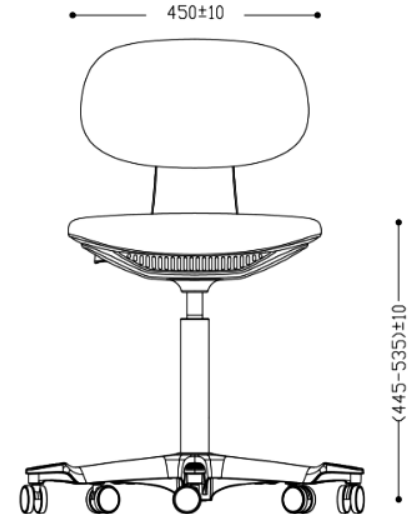
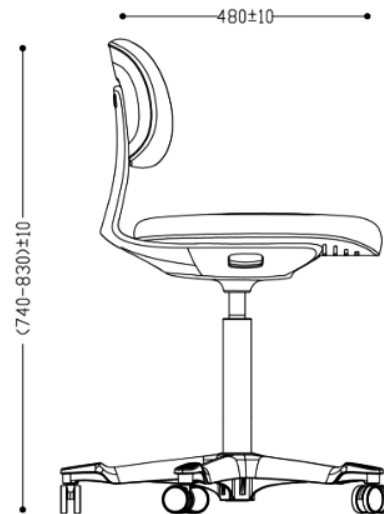
White

**WHAT'S  
YOUR  
FLAVOR  
FAVE?**

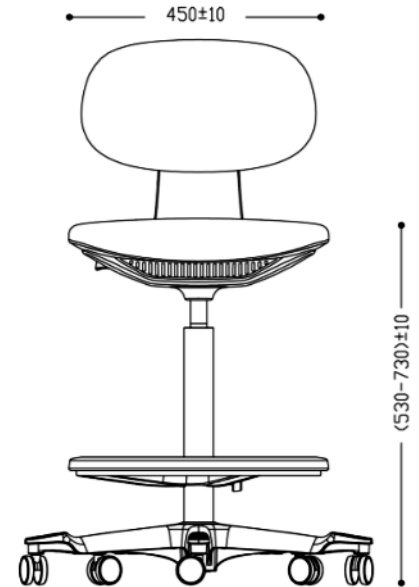
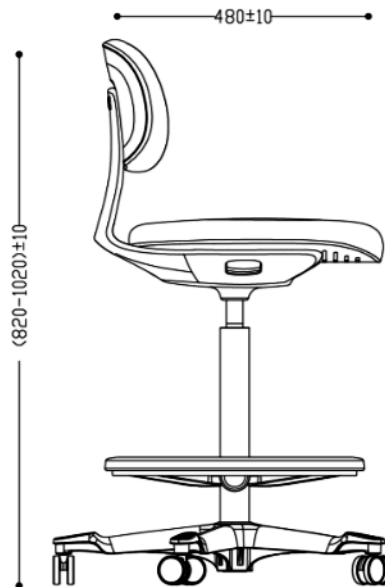


# uno

## COLLECTION



SHIPPING	
20 Foot	168
40 Foot Standard	344
40 Foot High Cube	430



[www.axessoem.co](http://www.axessoem.co)



4641 Stag Thicket Ln.  
Brunswick, Ohio 44212 (USA)  
[general@axess-int.com](mailto:general@axess-int.com)

