

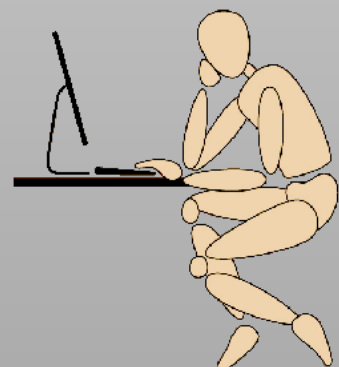
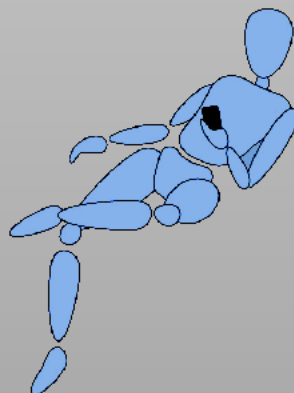
EVOLUTION



BODY  LANGUAGE

# EVOLUTION

BODY(B)LANGUAGE





**EVOLUTION** Is Ergonomically Designed To Adapt to You. No Two Individuals Are the Same. Body Shape, Size, Gender, and Generation Play an Important Role in Individual Sitting Preferences.

**EVOLUTION** Seating Is the Answer for Style and Function in any Office Seating Environment.



Fully Upholstered



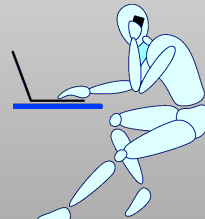
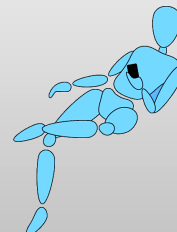
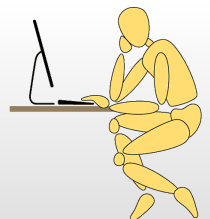
Mesh Seat & Back

## ALL DAY COMFORT

The Last Thing You Want To Worry About at Work Is the Chair You Are Sitting on. Ergonomically Design Blended With its Clean Outline, Solid Structure, and a Myriad of Configurations; EVOLUTION Will Organically Blends Into Your Work Environment While Providing a More Comfortable, Productive Users.

## STANDARD FEATURES

- Ergonomic Dynamic Reactive Back
- Huma-Flex Back (*Naturally Moves With You*)
- Optional 3-Way Adjustable Upholstered Headrest
- Upholstered Versions Integrates High Density Contract Grade Molded Foam
- Mesh Seat Version Includes 3D Durable Mesh With Waterfall Seat
- Multi-Functional Weight Balanced Auto Ultra Synchro Mechanism
- Seat Depth Adjustment
- Infinite Tilt Lock With Forward Tilt Lock
- 360° 5-Way Fluid Movement Dynamic Adjustable Arms
- Class 4 Grade Gas Cylinder
- Nylon Base With 60mm Castors
- High Back Version Includes Coat Hanger
- 300 Lbs. (136 Kgs.)
- Rated for 24/7 Use



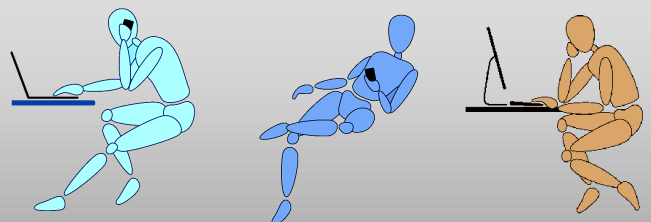
# EVOLUTION

BODY(B)LANGUAGE



## BE OUR GUEST

A Perfect Match. The Evolution Cantilever Sled Base Chair Is Available in a Variety of Versions and Finishes - Fully Upholstered, Full Mesh, or Upholstered Seat With Mesh Back.







## OPTIONS AT A GLANCE



**AUTO LUMBAR**



**HUMA-FLEX BACK**



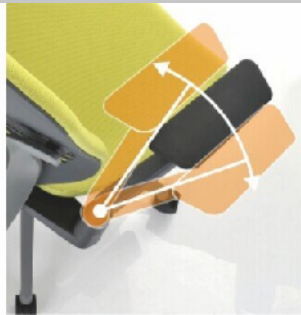
**FRONT TILT**



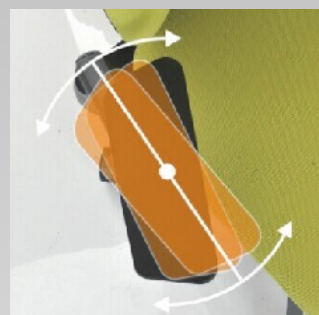
**BACK TILT**



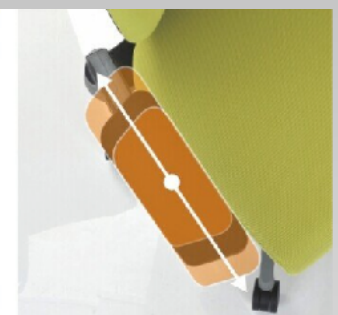
**HEIGHT ADJUSTABLE ARMS**



**WIDTH ADJUSTABLE ARMS**



**PIVOTING ARMCAP**



**SLIDING ARM CAP**



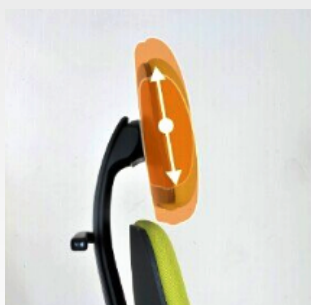
**Seat Depth  
Adjustment**



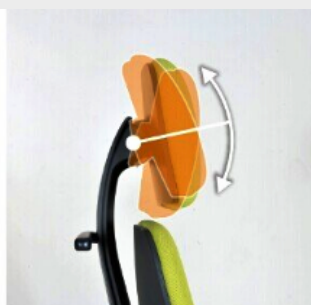
**Contoured 3D  
Mesh Seat**



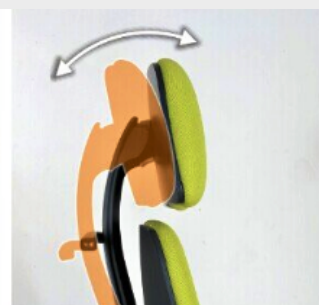
**Upholstered Seat Over  
High Density Foam**



**Height  
Adjustable Headrest**



**Articulating  
Headrest**



**Flexi Tilt  
Headrest**



ROTATING ARMS



Flexi-Tilt Articulating  
Headrest

Coat Hanger

Fully Upholstered/Mesh Back

Self-Adjusting Auto Lumbar  
Support

Tilting & Sliding Armcaps

360 Deg.  
Adjustable  
Arms

Upholstered/Mesh Seat

Seat Slider

Dual Action  
Tilt & Lock Control

Dual Action Adjustable  
Height/Tilt Tension  
Control







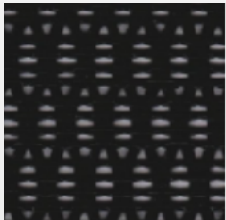




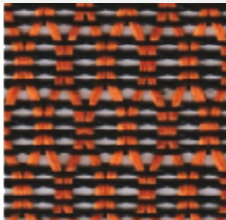


# WHAT'S YOUR FLAVOR FAVE?

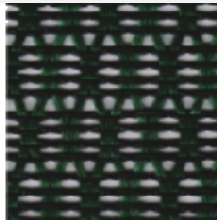
## Mesh Color Selection



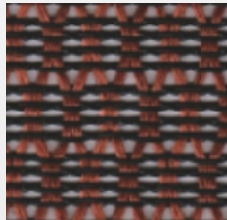
A01 Black



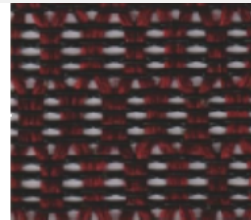
A02 Orange



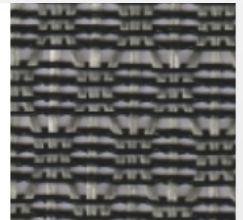
A03 Green



A04 Brown

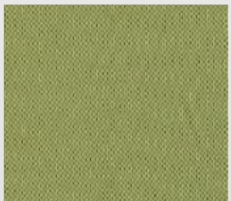


A05 Dark Red



A11 Grey

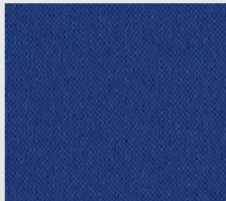
## Grade A Fabric Color Selection



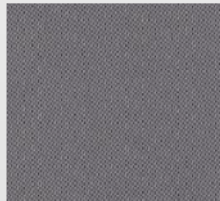
F01 Green



F02 Orange



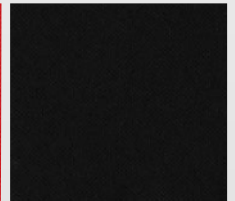
F03 Blue



F04 Grey

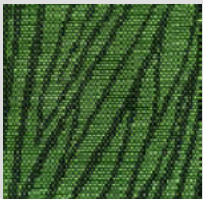


F05 Red



F06 Black

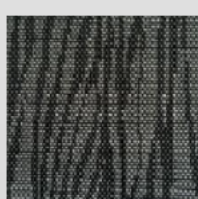
## Grade B Fabric Color Selection



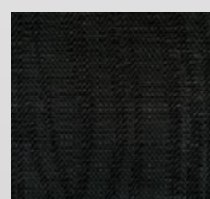
AF01 Green



AF07 Orange



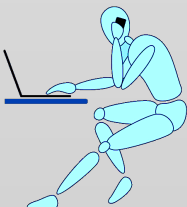
AF08 Grey



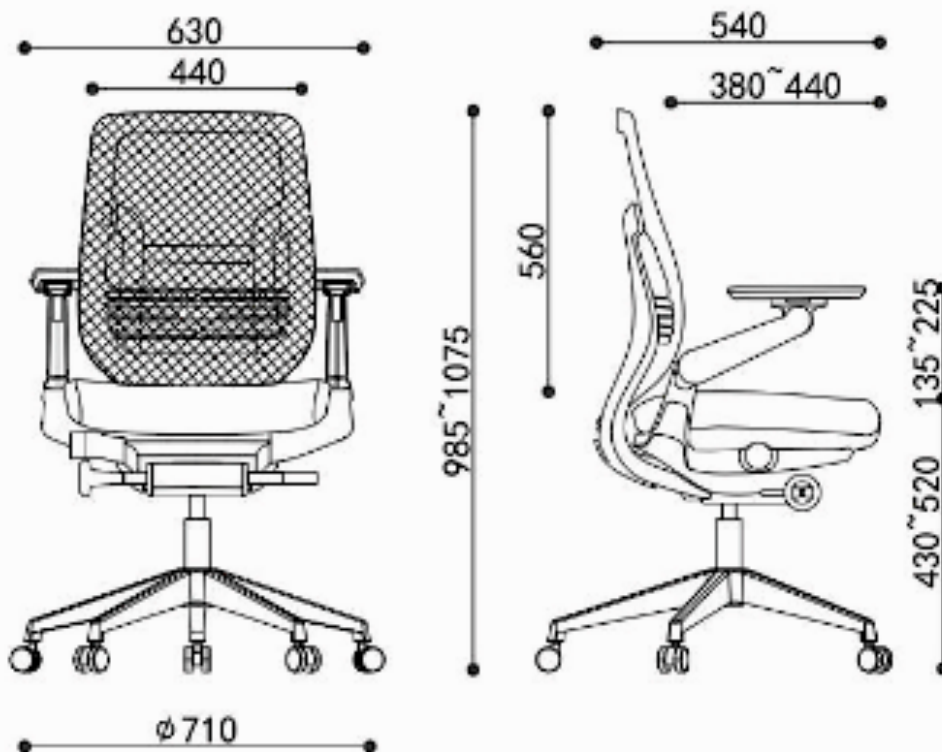
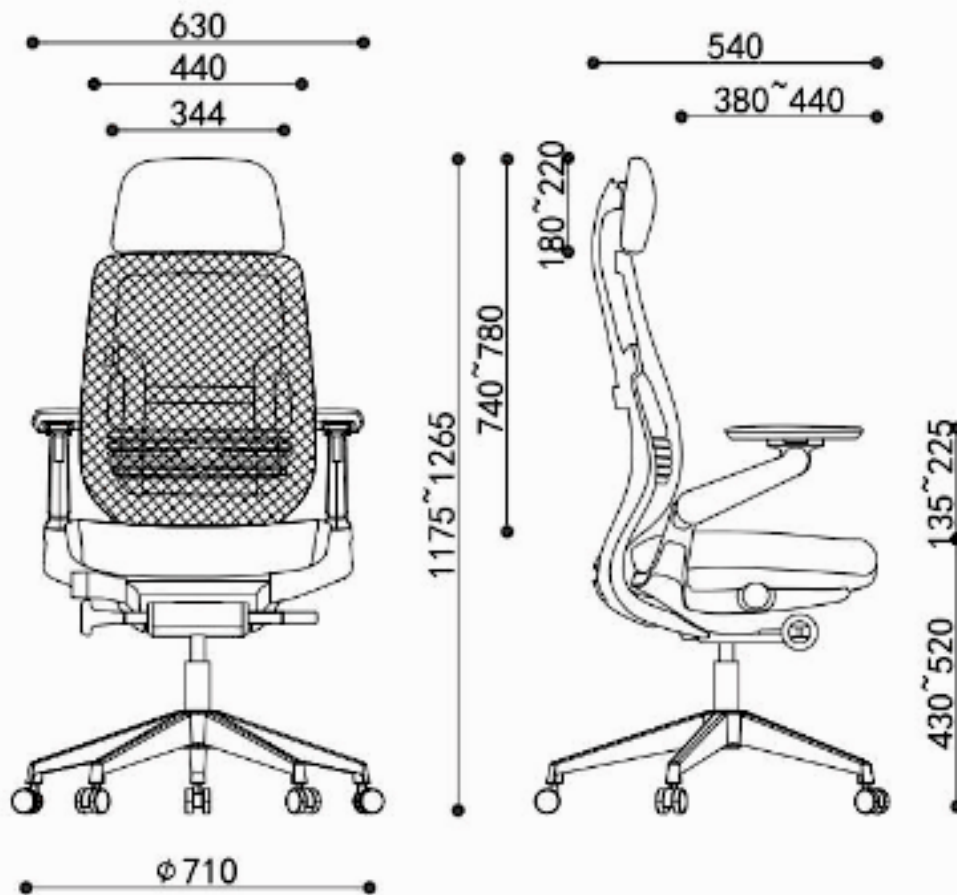
AF10 Black



AF09 Red









# EVOLUTION

BODY(B)LANGUAGE



### Shipping With Headrest

40 Foot HQ		222 Chairs
40 Foot GP		182 Chairs
20 Foot GP		91 Chairs

### Shipping No Headrest

40 Foot HQ		270 Chairs
40 Foot GP		210 Chairs
20 Foot GP		105 Chairs

### Packaging

73cm x 42cm x 68cm

### Weight

Net Weight: 24 Kgs.

Gross Weight: 26 Kgs.



[www.axessoem.com](http://www.axessoem.com)



4641 Stag Thicket Ln.  
Brunswick, Ohio 44212 (USA)

T: +1 (330) 460-4840

[general@axess-int.com](mailto:general@axess-int.com)