

2cETHER

FOLDING & NESTING TABLE COLLECTION





2GETHER

Tables Which Creates Dynamic, Fluid & Organic Spaces. Users Can Easily Configure, Connect, Fold & Stow the Tables on Demand. Arrange It for Conferencing, Training, Teaming, Seminars, or Just Convert a Room To Multi-Functional Space.

Works Great and Looks Elegant in any Setting, at any Time.



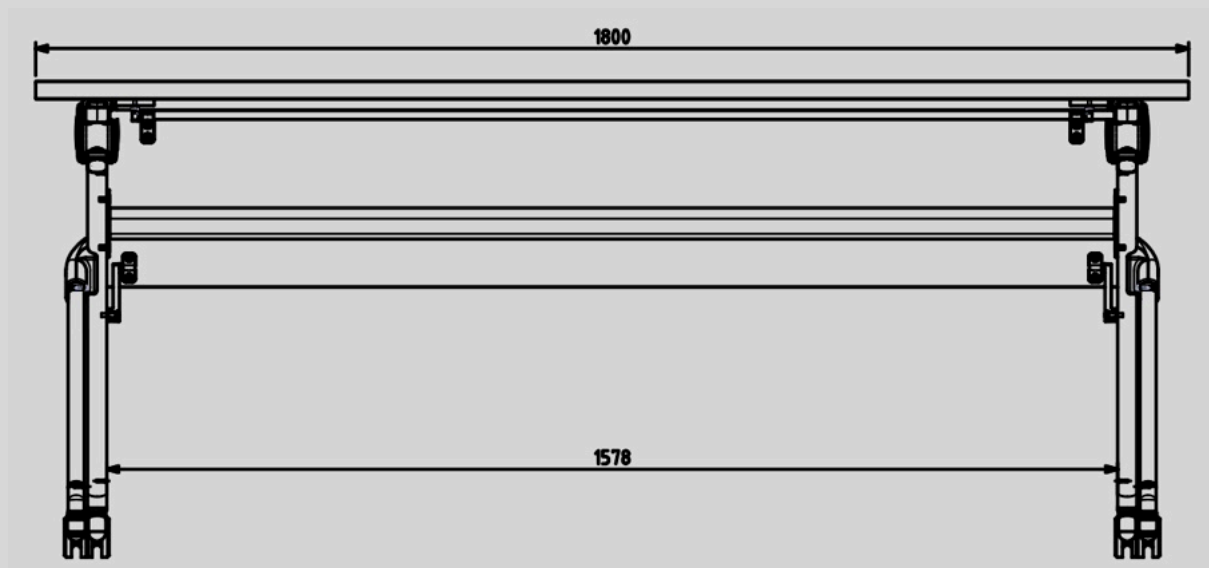
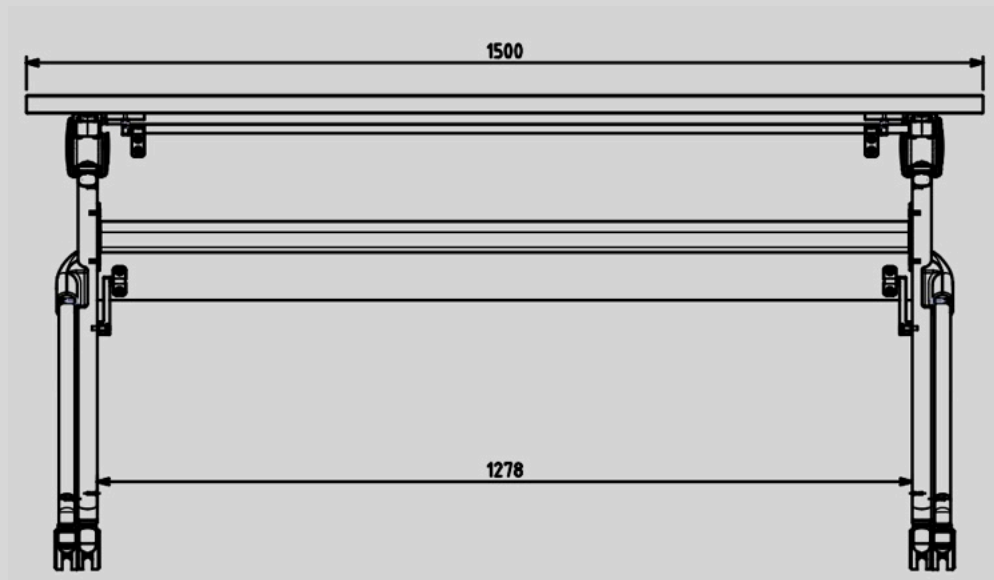
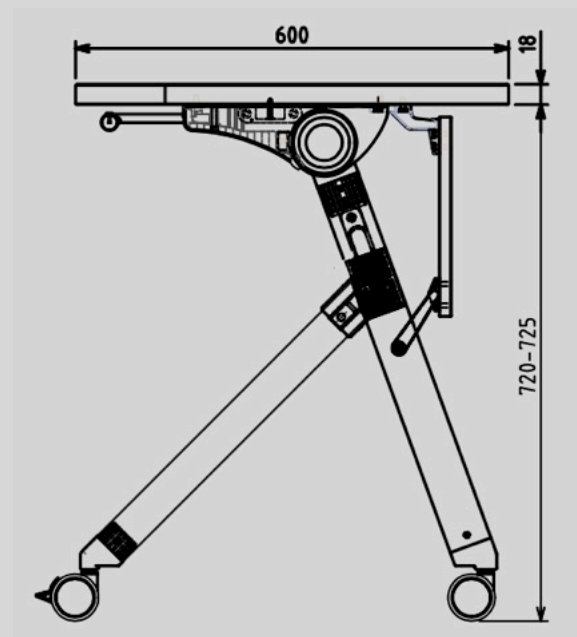
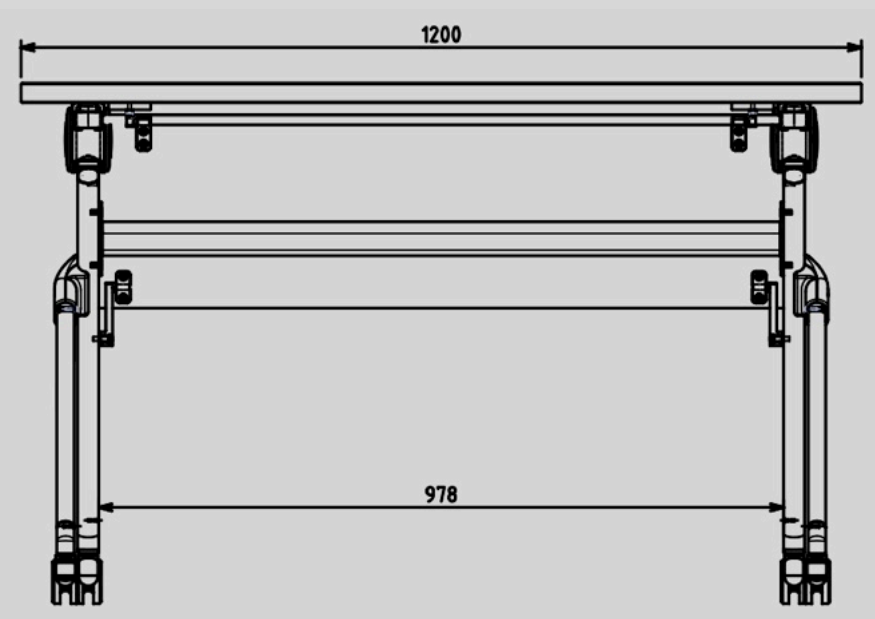
Features & Options

- Multi-Purpose folding & nesting
- Standard with modesty panel
- Central "Easy-Touch" lever mechanism
- 4-smooth mobility casters (two locking)
- Standard in white laminate top and matching edge
- Available in silver Nesting "A" Frame
- 3 standard sizes

✓ 1200W x 620D x 740H

✓ 1500W x 620D x 740H

✓ 1800W x 620D x 740H





2^{ETHER}

SHIPPING	1200mm	1500mm	1800mm
40 Foot	405	375	325
20 Foot	200	185	160



www.axessoem.com



4641 Stag Thicket Ln.
Brunswick, Ohio 44212 (USA)
general@axess-int.com