

OPUS

EXECUTIVE

Access  
International  
DEM



## DESIGNED BY CLAUDIO BELLINI

Claudio Francesco Bellini (1963) is living and working in Milan, where he graduated in Architecture and Industrial design at the renowned Politecnico university in 1990.

His strong fascination with creativity, is rooted in his early childhood years, inspired by his father Mario Bellini, whom counts as one of the most affluent figures in design history.

Today Claudio Bellini Design, recognized as one of the most influential European studios, is active within several fields of design, ranging from furniture to product and architecture, collaborating with leading companies worldwide including Walter Knoll; Steelcase; Poltrona Frau; Riva 1920. Many of its creations have received international design awards, among which the prestigious Red Dot, IF and Good design award.





## Inspiration...

The idea behind the design concept is to enhance the exposure of a working environment , hence providing collaborations and engagement within office spaces, while providing ample functional work spaces.

OPUS is designed to create a smart, flexible, fun, and organic furniture collection that is suitable for every kind of working environment be it collaborative spaces, private offices, or open space.

OPUS is derived from the latin word '*Work*'. Working environments are fluid and ever-changing. OPUS scalability and functionality is just the perfect solution to expand and contract as your work environment changes. What better way to build relationships, teamwork environments within your workspace community.

**OPUS**  
EXECUTIVE

OPUS is a high-quality organically designed office system that can meet the needs of various functions in the office space.

The leg design is inspired by the streamlined spindle 'A-shape' pylon structure . The structure is created by precision cutting techniques and materials application which is not only three-dimensional and flexible, but also adds architectural aesthetics to the office space.

The MFC texture of OPUS is co-developed with the German MFC expert SURTECO. The patterns are clear and natural which makes finished look more vivid and uniquely attractive.

OPUS is not only aesthetically pleasing, but it's also environmentally friendly to meet the Japanese and European 'E0' stringent environmental standards.





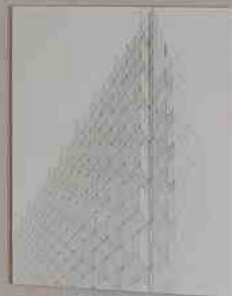
**OPUS**  
EXECUTIVE



OPUS  
EXECUTIVE



OPUS  
EXECUTIVE



OPUS  
EXECUTIVE





OPUS  
EXECUTIVE





**OPUS**  
EXECUTIVE





OPUS  
EXECUTIVE





## Meeting & Conference

Modular & Scalable, OPUS Sophisticated Conference and Meeting Table Design Focuses on its Quality and Aesthetics. Organically Designed To Meet the Needs Irrespective of the Space.

## The Power Channel

The OPUS Power Channel Is Integrated Into the Worktop. Easily Accessible and Easy To Use, the Power Channel Can Be Equipped With a Variety of Power Modules To Meet Your Needs.





OPUS  
EXECUTIVE



OPUS  
EXECUTIVE





**OPUS**  
EXECUTIVE

## SMART

OPUS Adopts a High Degree of Sophisticated Technology. Contrasting Aluminum Framing Is Designed To Enhance its Sleek Modern Aesthetics

## POWER & DATA INNOVATIONS



Transition Top Power Module



Multi-Functional Mini Storage



Power Rotate Conference Module

## SUPPORT LEGS

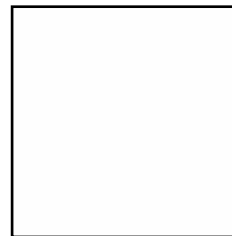


STEEL LEG



ALUMINUM LEG

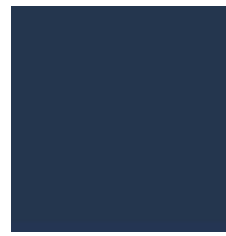
## LEG & FRAME COLORS



S01  
SOLAR WHITE



S03  
STEEL GREY



S15  
STEEL BLUE





101

pearl white



617

jackson pine



628

nussbaum



203

light grey



578

renew cherry



235

grey



206

graphite



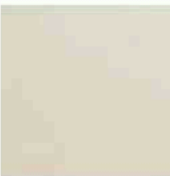
708

cara idun



392

polar birch



228

ivory



325

murnau maple



620

marone



409

pear tree bonelli



405B

cherry morgana



416

walnut tiepolo



407

walnut esperia



403

palisander santos

**MFC LAMINATES**

WHAT'S  
YOUR  
FLAVOR  
FAVE?

**OPUS**  
EXECUTIVE

## WOOD VENEER



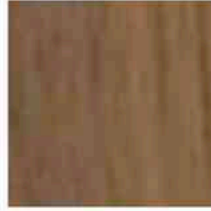
WP01  
TECT NICAL



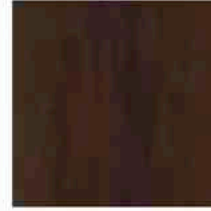
WP02  
DARK WALNUT  
CONFERENCE



WP03  
LIGHT WALNUT  
CONFERENCE



WP04  
MATT WALNUT  
CONFERENCE

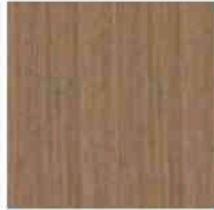


WP05  
EBONY WALNUT  
CONFERENCE

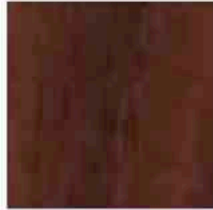
WHAT'S  
YOUR  
FLAVOR  
FAVE?



WP06  
WHITE OAK



WP07  
LIGHT ROSEWOOD



WP08  
DARK ROSEWOOD



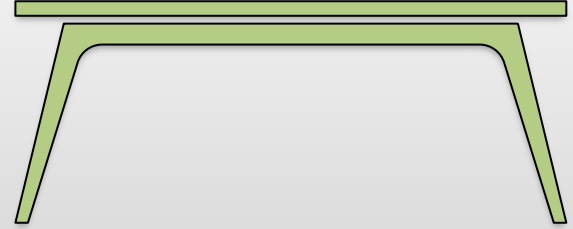
WP09  
SMOKED OAK MATT





# OPUS

## EXECUTIVE



[www.axessoem.com](http://www.axessoem.com)



4641 Stag Thicket Ln.  
Brunswick, Ohio 44212 (USA)  
T: +1 (330) 460-4840  
[general@axess-int.com](mailto:general@axess-int.com)