

arico



red**dot** design award



PETER HORN

Making things work is Peter's speciality. He has spent the last 15 years working as a design engineer creating and developing office furniture, consumer electronics and ergonomic syncro-tilt mechanisms. Peter is an expert in free-form modeling and ergonomics.



arico **DESIGN DYNAMICS**

The key feature of this elegant executive chair is the simplified construction of the spring system, which allows the size of the cable-guided mechanism to be reduced without sacrificing functionality. The mechanism is integrated within the aluminum alloy armrest. The user-friendly design allows the tilt angle of the backrest to be adjusted quickly. When the tilt angle is reset, the inbuilt spring reduces the back-thrust of the backrest. All additional functional adjustments such as the seat-height are similarly straightforward.



E2 ARICO is a sleek executive chair, designed for senior managers. As opposed to many other conference and executive chairs, E2 works with a full functional synchronized mechanism which offers high ergonomic comfort and mobility for the user. The E2 Arico chair family organically extends the collection seamless and multi-functionality within any work environment.









THE LITTLE DETAILS
THAT MAKE A **BIG**
DIFFERENCE !



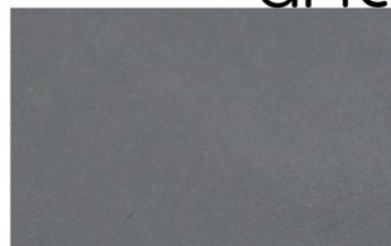
Genuine Leather



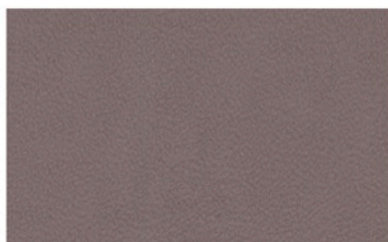
AR-L01
Black



AR-L02
Brown



AR-L03
Grey



AR-L04
Light Brown



AR-L05
Cool Grey

WHAT'S
YOUR
FLAVOR
FAVE?

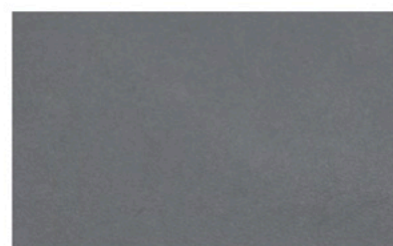
Faux Leather



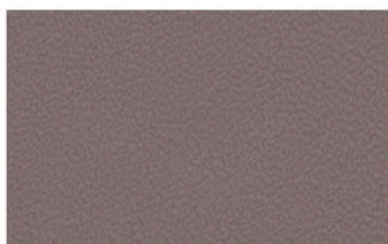
AR-P01
Black



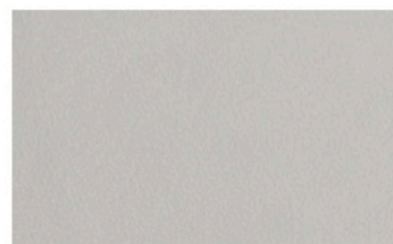
AR-P02
Brown



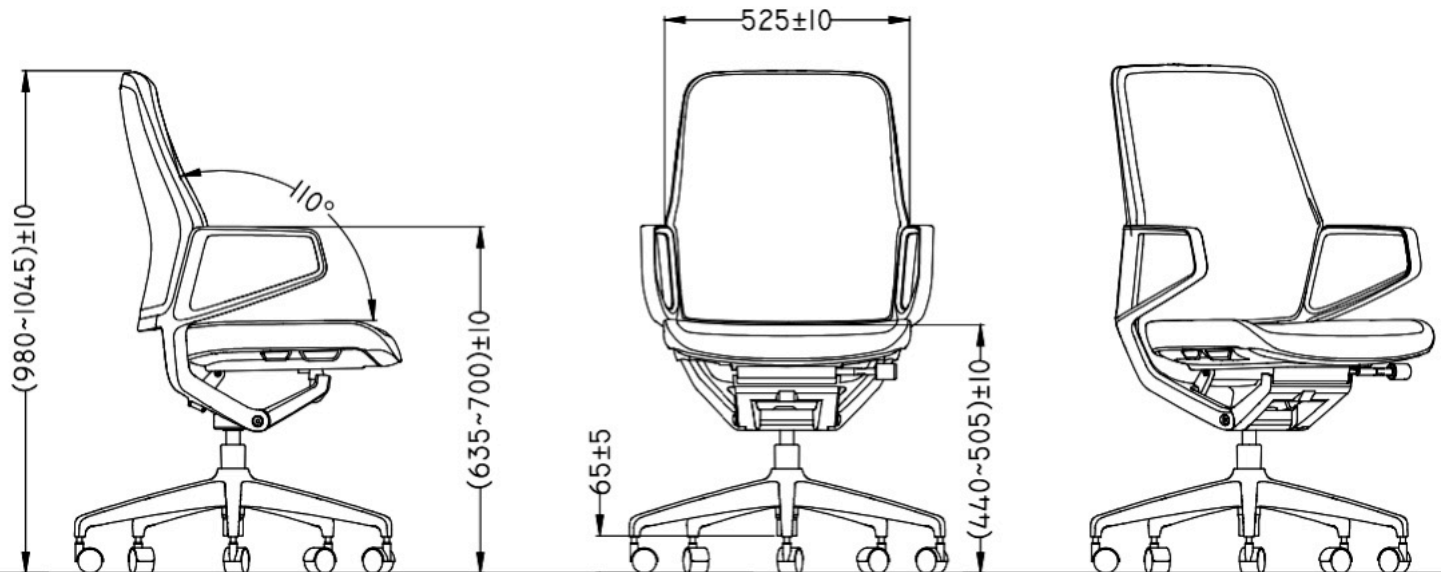
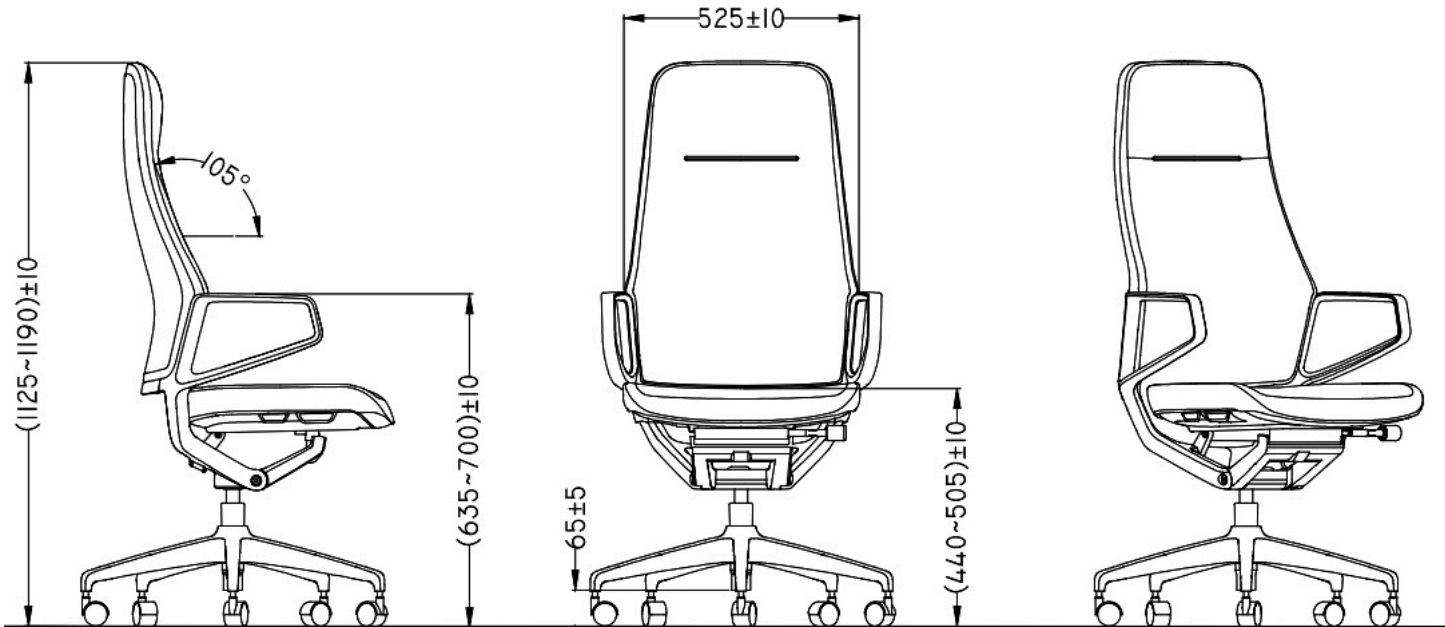
AR-P03
Grey



AR-P04
Light Brown



AR-P05
Cool Grey



SHIPPING	Midback	Executive
----------	---------	-----------

20 Foot	104	88
40 Foot HC	270	228



www.axessoem.com



4641 Stag Thicket Ln.
Brunswick, Ohio 44212 (USA)

T: +1 (330) 460-4840

general@axess-int.com

