



COMPLETELY **BOLD.** EVER SO PRACTICAL.

From the Cafeteria to the Training Room, VIBE Always Makes the Right Impression. Contoured Polypropylene Seating Surfaces Comfortably Support Users While Adding a Pop of Color. For Longer Term Seating Needs, Choose an Upholstered Seat Cover in a Range of Materials and Patterns That Suit Your Space. VIBE Stacks Six High on the Floor or 30 on a Dolly and Is Easy To Stow.



Simple Yet Vibrant

Poly Shell Colors and Seat Cushion Colors Are Available in Wide Variety of Colors for an Amazing Range of Uses.





Poly **Seat**

Upholstered **Seat**







● — White

● — Blue

● — Green

● — Grey

● — Red

● — Black

Seat & Back Shell Colors



PP06 WHITE



PP09 LIGHT BLUE



PP05 GREEN



PP08 GREY

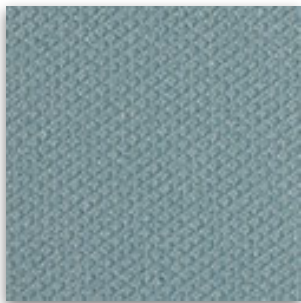


PP011 BLACK

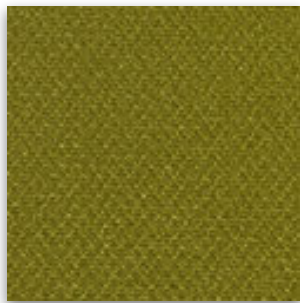


PP07 RED

Seat Upholstery Fabrics



FC1205 STEEL BLUE



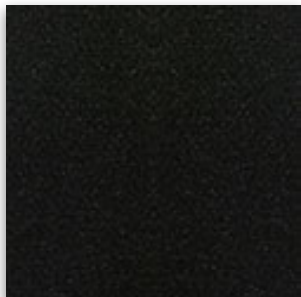
FC1204 GREEN



FC1203 RED



FC1202 BROWN



FC1201 BLACK

**WHAT'S
YOUR
FLAVOR
FAVE?**



Container Loading Capacity

40 Foot HQ		960 Chairs
40 Foot GP		768 Chairs
20 Foot GP		352 Chairs



www.axessoem.com



4641 Stag Thicket Ln.
Brunswick, Ohio 44212 (USA)
T: +1 (330) 460-4840
general@axess-int.com