

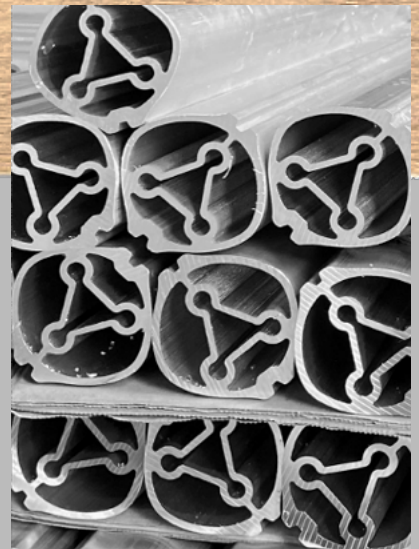
2ETHER





Today's Workspace Design No Longer Distinguishes Industries. The Dynamics of Different Work Environments Creates New Experiences. 2Gether-T Folding Table Is Organic Between Sculptural Architecture and Industrial Design With Smooth Lines and Aesthetics Makes It Multifunctional for Modular Conferencing, Educational & Training, Healthcare, Just To Name a Few.


Make Your Office Real Estate Count by Converting Your Workspace To Meet Your Specific Needs on Demand.



Cold Rolled Triangular 6061 Aluminum Alloy Provides Structural Integrity & Corrosion Resistance in Humid Environments.

Environmentally Conscious Being 100% Recyclable.

2^{GETHER}

The image shows a person's hand in a white shirt sleeve operating a control lever on a desk. A circular inset provides a magnified view of the control lever, which is a grey plastic component with a black handle, mounted on a wooden desk surface. Two black cables are connected to the bottom of the lever. An orange circle and a horizontal line highlight the control lever in the main image, with a dashed orange line connecting it to the circular inset.

Single Position Cable
Operated Folding
Control Lever
Mechanism

Lock/Unlock Control Mechanism

The Simple Flip-Top Mechanism Is Designed to for Single-Handed Operation

Top & Modesty Panel Construction

MFC Laminate Faced Chipboard With Matching PVC Edge

Structural

Die Cast Aluminum & Cold Rolled Steel Base Structure Components

Modesty Panel

Privacy Modesty Panels Are Standard on all Table Sizes

Castors With Brakes

Easy Lock Nonstick Glide Castors With Brakes

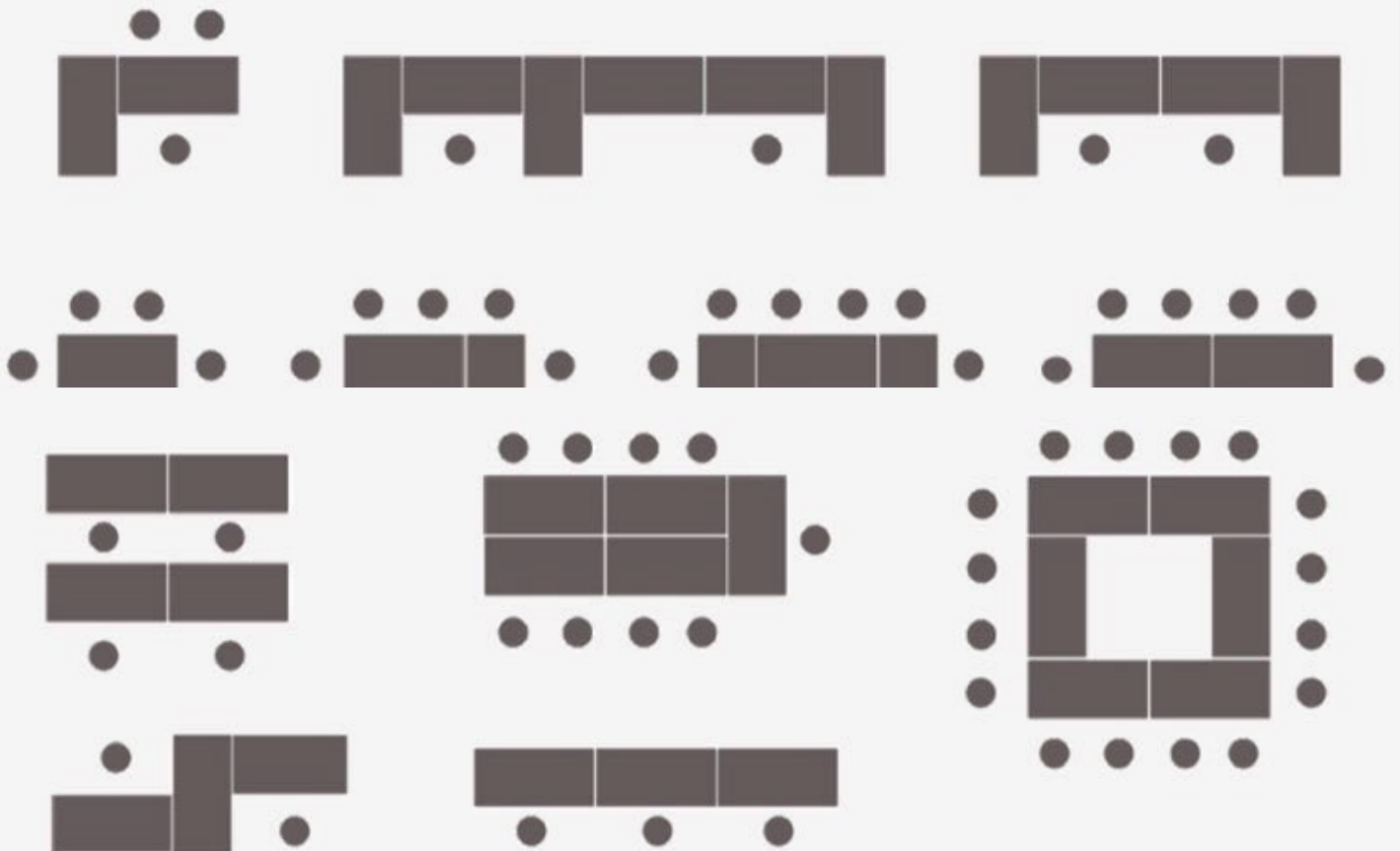


TOP SIZES	WIDTH	DEPTH	HEIGHT	WIDTH	DEPTH	HEIGHT
	600	1200	745	800	1200	745
		1300			1300	
		1400			1400	
		1500			1500	
		1600			1600	
	1800	1800				

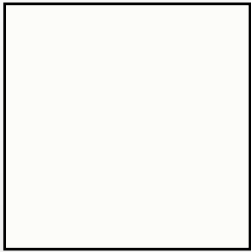


2cETHER

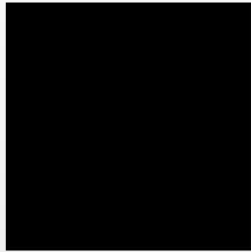
form
& function



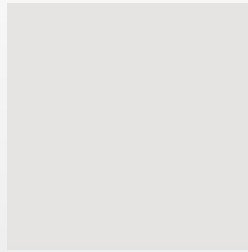
LAMINATES



101



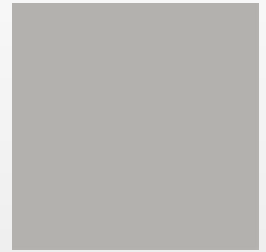
149



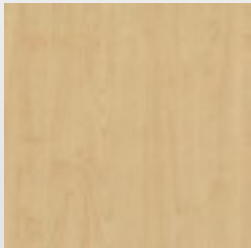
203B



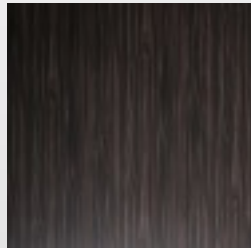
206



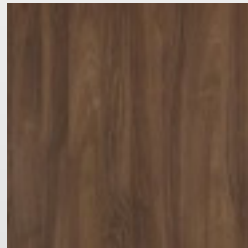
235B



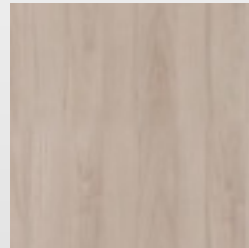
325



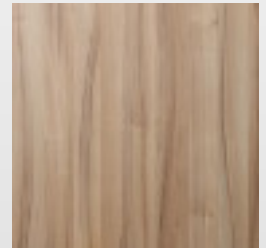
403



407



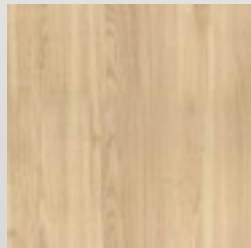
409



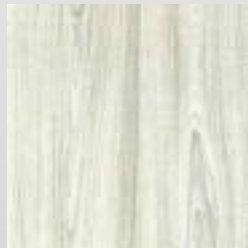
416



578



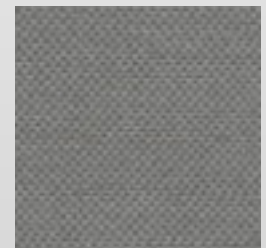
620



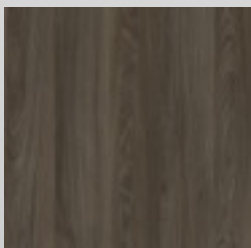
628



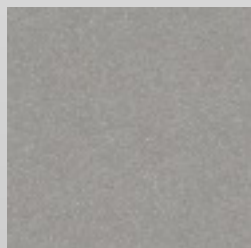
708



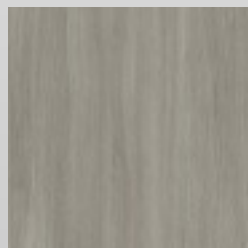
837



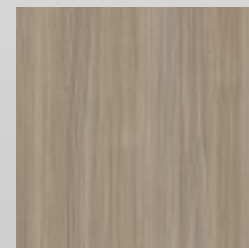
867



877



888



893

ALUMINUM BASE



S20 White



S21 Gunmetal

WHAT'S
YOUR
FLAVOR
FAVE?



SHIPPING	1200mm	1300mm	1400mm	1500mm	1600mm	1800mm
20 Foot	255	252	239	232	221	216
40 Foot	514	506	498	486	464	432
40 Foot HC	594	582	570	554	540	482



www.axessoem.com



4641 Stag Thicket Ln.
Brunswick, Ohio 44212 (USA)
general@axess-int.com