

VILLA HEIGHTS

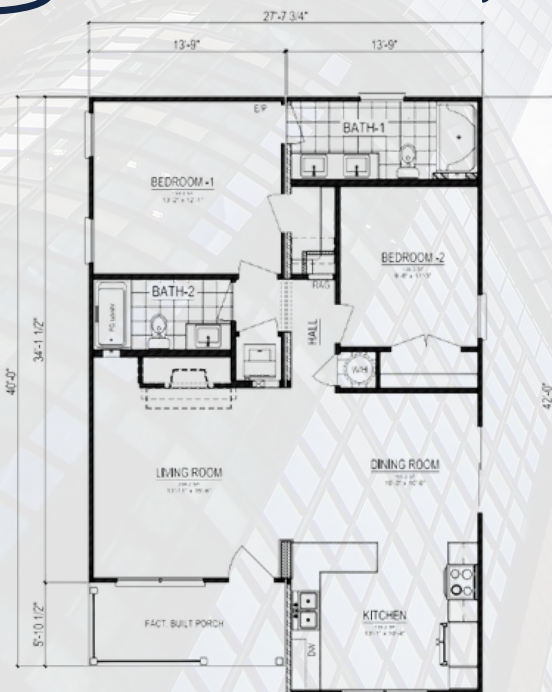
NEW CONSTRUCTION HOUSING PROJECT

- 2 BEDROOM
- 2 BATHROOM
- 1,052 SQUARE FEET
- HENRY COUNTY
- OPEN CONCEPT
- COVERED PORCH
- MAIN LEVEL LAUNDRY
- PRIMARY SUITE WITH WALK-IN CLOSET

LIST PRICE: \$177,000



**1662 STULTZ ROAD
MARTINSVILLE, VA 24112**



HAVENMORE
KW MARTINSVILLE

ARE YOU A CANDIDATE?



MUST HAVE CRITERIA:

- LIVE OR WORK IN HENRY COUNTY
- CREDIT SCORE AROUND 640
- INCOME LIMITS RANGING FROM \$57,288 (1 PERSON HOUSEHOLD) TO \$108,028 (8 PERSON HOUSEHOLD)

***LENDER/CLT/PARTNERS TO VERIFY FINAL APPROVAL*

REQUIREMENTS:

1. COMPLETE PRE-QUALIFYING CREDENTIAL APPLICATION WITH LOCAL WEST PIEDMONT PLANNING DISTRICT COMMISSION
2. COMPLETE LOAN APPLICATION
3. COMPLETE HOMEBUYER EDUCATION WORKSHOP
4. ATTEND ORIENTATION MEETING WITH COMMUNITY LAND TRUST PARTNER

FOR MORE INFORMATION:



[HAVENMORE.COM/VILLAHEIGHTS](https://havenmore.com/villaheights)



[INFO@HAVENMORE.COM](mailto:info@havenmore.com)



276.788.7653



HAVENMORE
KW MARTINSVILLE