



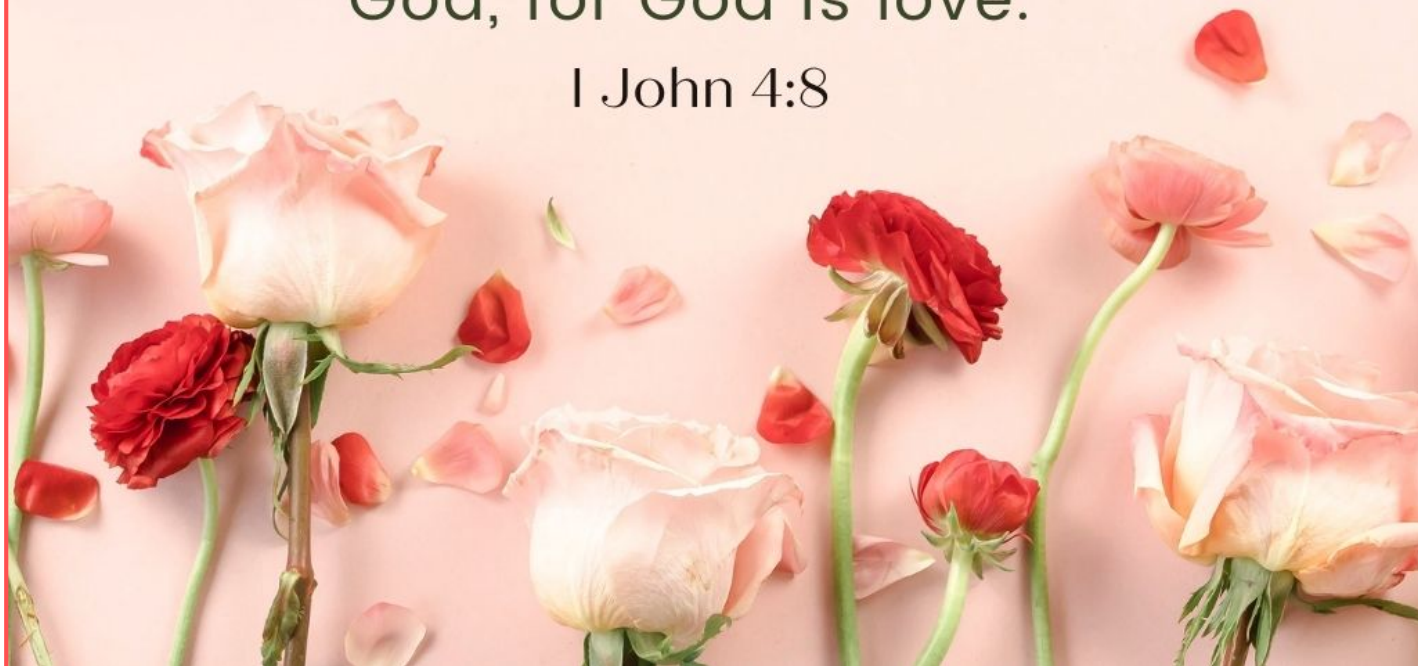
Forecaster

Faith Lutheran Church * February 2025



He who doesn't love doesn't know
God, for God is love.

1 John 4:8



We often think of Valentine's Day as the day for couples to show their love to one another, but rarely do we use the day to remind us of God's unmatched love for us, His children. For many single people, Valentine's Day can be a bitter reminder of their singleness and desire for a relationship. Luckily, God doesn't leave anyone, single or in a relationship, out of His unending love and grace.

In 1 John 4:8, the author says, "Whoever does not love does not know God, because God is love."

God is love itself. We wouldn't have any conception of "love" at all if it weren't for God, the definition of love.

God further defines love in the classic 1 Corinthians 13:4-8 passage that reads, "Love is patient, love is kind. It does not envy, it does not boast, it is not proud. It does not dishonor others, it is not self-seeking, it is not easily angered, it keeps no record of wrongs. Love does not delight in evil but rejoices with the truth. It always protects, always trusts, always hopes, always perseveres. Love never fails."

God describes love in this way, and then tells us that He is love. This further emphasizes that God himself is all of these things.

God is patient and kind. He keeps no record of wrongs. He always protects, always trusts, always hopes and always perseveres. God's love is a perfect love that no one on earth could ever emulate.

We often read this 1 Corinthians passage near Valentine's Day or at weddings to remind us what love should look like, but God is the perfect demonstration of it.

John 3:16 says, "For God so loved the world that he gave his one and only Son, that whoever believes in him shall not perish but have eternal life."

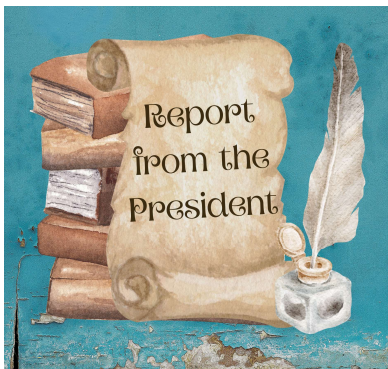
He gave up His only son for us. He gave us eternal life because of His great and unmatched love for each of us.

The theologian C.S. Lewis once said, "He died not for men, but for each man. If each man had been the only man made, He would have done no less."

God loves you so much. If you were the only one on earth, He still would have sent His son for you.

So, this Valentine's Day, remember to set your sights not on earthy relationships, but on the God above who loves far more fully and abundantly than we could ever imagine.

Borrowed from: Allison Richmond (GCU Blog)



Dear Faith Family,

As this will be my last message as President of the Council, I wanted to take this opportunity to thank all Council Members and Committee members for their hard work and dedication this past year. Your efforts have made a meaningful impact, and I deeply appreciate your contributions!

I would like to say a special thank you to Lynn for holding us together and being there when I really needed someone in the know.

THANK YOU AGAIN!!!

My heart is full!!

God's Blessings,
Diane Swarts, Council President

**Save
the
Date!**

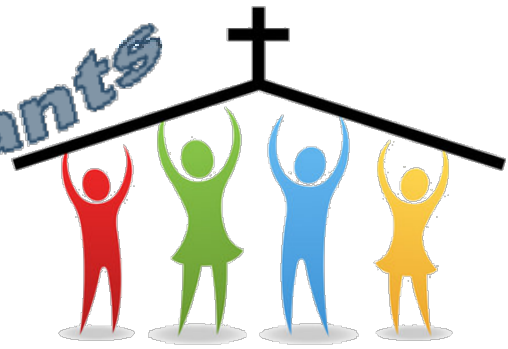
Mark your calendar and save the date!
Our **Annual Congregational Meeting** will
be held on

February 23, 2025!

♡ Happy Valentine's Day ♡

Worship Assistants

February



Asst. Ministers	Lectors	Power Point	Ushers	Greeters	Attendance
2nd: Roderick	2nd: Lorna	2nd: Marlene	2nd: Annie	2nd: Judy Appel	2nd: Diane M.
9th: Candy	9th: Kathy	9th: Bill	9th: Gina	9th: Dave F.	9th: Shirley
16th: Marlene	16th: Bill	16th: Candy	16th: Judy Appel	16th: Judy Adams	16th: Pat O.
23rd: Joanne	23rd: Candy	23rd: Mike	23rd: Diane M.	23rd: Marlene	23rd: Kathy
Altar Guild: 2nd, 9th: Debbie, Kandie 16th, 23rd: Marlene, Kay					

*Let's all Welcome our New Member,
Bonnie Lindgren!*

Please add this information to your copy of your Member Directory:

Bonnie Lindgren
28656 Bradley Rd., Menifee, CA 92586
(951) 821-1154
bonnies25852@yahoo.com



Bonnie and her sponsor, Judy Appel



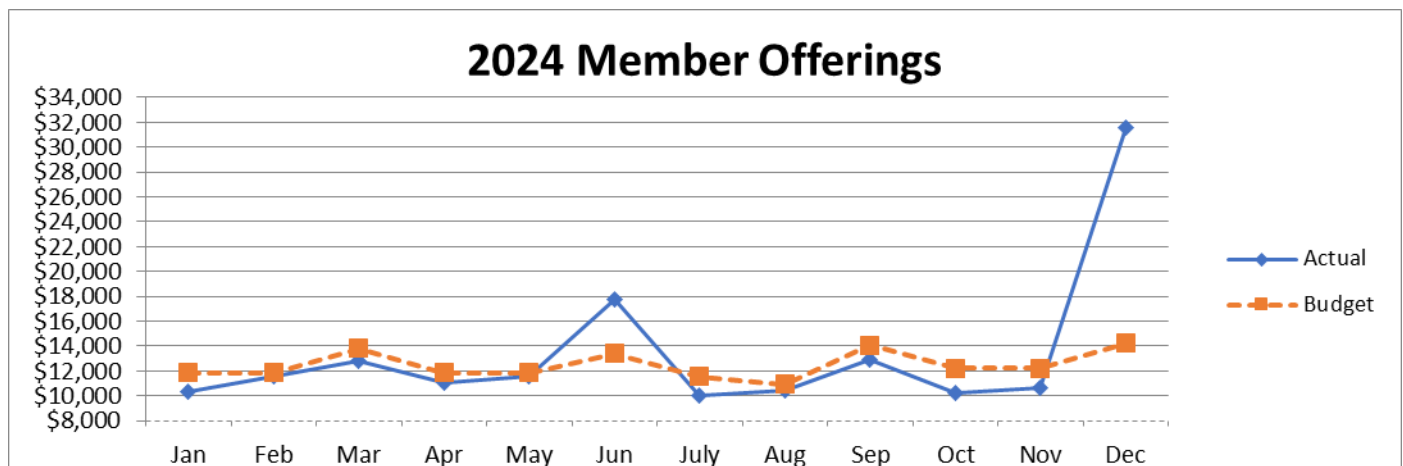
The next MilVet packing event, "Troops & Tacos" is on February 24th from 5:00pm – 7:00pm. These events are held monthly to pack up goodies and supplies to ship to our deployed troops. We would love to get some of our Faith members to regularly pitch in on this worthwhile event! You can sign up at milvet.org. There is a suggested donation of \$25.00, which includes food, supplies and the cost to ship the packages to our deployed troops.

Each event is held at a different location...on February 24th we are meeting at the Elsinore Elks Lodge #2591, 33700 Mission Trail in Wildomar. Register at www.milvet.org/troops, wear your FaithWear and come join in on the fun!

FINANCIAL REPORT for DECEMBER 31, 2024

1. Comments

- a. Member giving was significantly above budget, due to 2 large gifts representing a yearly contribution each; for the year, Member giving is above budget by 7.4%, again, due to the large year-end donations in December. These gifts caused Total Income for the month to be significantly above budget.
- b. For the year, the 2 year-end contributions boosted our Member giving to exceed budget. However, Total Income for the year was below budget because the budget included \$23,263 from the Land Sale which was not received. Overall, a good year.
- c. Monthly Expenses were substantially above budget because we chose to transfer over \$26,000 of unspent Pastoral Expense to the New Pastor Reserve Fund "savings" account on our balance sheet on December. The amount chosen for transfer resulted in ending the year overall with no loss or surplus – net zero. When monies are transferred to the Balance Sheet, it results in expense on the Budget vs Actual report (also known as a Profit & Loss Statement). We now have just over \$83,000 set aside for expenses related to calling our new Pastor. I don't see a need to add anything further going forward.
- d. For the year, Expenses were under budget mostly because we didn't spend (or transfer) a little over \$17,000 of the budgeted Pastoral Expense during the year.



2. Financials Review

- a. **Offering Envelopes**
 - i) **For the month**, significantly above budget at 221.7% (\$31,568 vs \$14,238).
 - ii) **Year-to-date**, above budget at 107.4% (\$160,917 vs \$149,828).
- b. **Total Income**
 - i) **For the month**, significantly above budget at 190.9% (\$36,711 vs \$19,232).
 - ii) **Year-to-date**, slightly below budget at 95.5% (\$213,387 vs \$223,496).
- c. **Expenses**
 - i) **For the month**, significantly above budget at 193.7% (\$36,711 vs \$18,952).
 - ii) **Year-to-date**, below budget at 90.9% (\$203,243 vs \$223,496).
- d. **Net Operating Income** (Total Income minus Expenses)
 - i) **For the month**, a surplus of \$0 vs the expected surplus of \$280.
 - ii) **Year-to-date**, a surplus of \$10,144 vs the expected surplus of \$0.
- e. **Checking balance**
 - i) **Balance at Month-end** is \$13,445.
 - ii) **Previous Month-end balance** was \$13,526.





BIRTHDAY BLESSINGS

To

February 7, 2005
February 20, 1941

Deane Meckler
Bea Olsen



ANNIVERSARY BLESSINGS

To

February 14, 1970

Randy and Kandie Hulme



If we missed your birthday or anniversary, please notify the church office so we can add you to our list!



Hunger Never Rests!

**The Menifee Valley Community Cupboard
is in need of
Protein Bars for February!**

Your donations are always welcome and needed! Bring your donations to the church office during our regular hours or you may drop your items off at The Cupboard at 26944 Cherry Hills Blvd (951/301-4414). When you drop off your donations, please inform the Community Cupboard you are from Faith Lutheran. If you are a Thrivent member you may wish to use your Thrivent Action Card to purchase up to \$250.00 of food for the Cupboard. For more information, call Diane Swarts at (949) 500-7986.

Diane Swarts - Community Cupboard Liaison



We need to update our church website. Are YOU able to get creative with designing content and posting pictures on our church website? Please call or email the church office if you are interested.



Snip and Stitch is now supporting Project Linus

Their mission is to provide love, a sense of security, warmth and comfort to children who are seriously ill, traumatized, or otherwise in need, through the gifts of new handmade blankets and afghans, lovingly created by volunteer "blanketeers."

New handmade blankets of all kinds including knitted, crocheted, quilted and fleece blankets are accepted. A handout of requirements for Project Linus blankets can be found in the narthex. Do your creative magic at home or join us at Snip and Stich for fellowship as you create. **Snip and Stitch meets on the 1st and 3rd Thursdays from 9-12.** Come as you can, leave when you must.

Snip and Stitch needs volunteers to iron at home

At least twice a year we receive several bags of donated cotton fabric that need to be ironed before we can cut and sew the fabric into quilts. See Kathy Kent to get a bag of fabric to iron. Be part of this heartwarming ministry!



Would you like to be a prayer partner and have one for 2025?

What is a prayer partner? A prayer partner is an anonymous person who prays for you regularly. A prayer partner may also choose to send you a card or do something small to make your day on occasion. But the key to being a great prayer partner is the act of prayer. At the end of the year your prayer partner will be revealed, and you will know who has been actively praying for you throughout the year.

Be part of Faith in action and get a prayer partner. See Kandie Hulme if you would like to be a part of this ministry.

Explore God's Word with Us

a ministry of Women of the ELCA (W-ELCA)



Beyond Sunday worship, exploring God's word is important to growing our relationship with Christ. WELCA gives you two different opportunities to explore His word in fellowship with others.

- **Mary Circle** is studying "Faithfulness" using studies from the Gather Magazine. They meet on the second Wednesday of the month (Feb 12) at 10am in the library.
- **Lydia Evening Bible Study** will study Queen Sheba. They meet on the third Thursday of the month (Feb 20) at 6pm in the library.

We are never too old or too young to continue learning to walk in faith with Christ daily. Join us to grow your faith in 2025!



Save These Dates for W-ELCA Events!!

Women of Faith, be part of the fun and mark your calendars to attend these key events!!

Step into Spring!



Saturday March 1 - Pacifica Synod W-ELCA Spring Gathering at King of Glory Lutheran Church in Fountain Valley. Registration forms and more info will be in the Narthex.

Saturday, March 22 – Quarterly Women of the ELCA (W-ELCA) meeting at Faith at 1pm. Join us for Tea, coffee and snacks while we learn more about Project Linus and make fleece blankets to donate. No sewing is involved, only fun and fellowship!

Project Linus



**Providing
Security
Through
Blankets**



Saturday, June 22 – W-ELCA Annual Fundraiser benefiting MilVet. The Rancho Rockers are scheduled to play, baskets will be raffled off and we will have a delicious lunch! Do not miss out on the fun! Bring your friends and families and plan to fill a table. Help us make this event the best one yet, while supporting our veterans and active-duty service members.

Gift Baskets for W-ELCA Fundraiser to benefit MilVet

Our annual W-ELCA fundraiser is just over 4 months away (June 22) and it is not too late to be thinking about and planning for gift baskets for our raffle.

- Want to donate a basket? Think of a theme and start collecting items.
- Did you receive a gift or gift card you will not use? Regift it for our gift baskets.
- Want to donate cash or check? Donate to WELCA and note "gift baskets" in the memo line. We will use the monies to buy gift cards to supplement the baskets.
- Do you quilt, crochet or craft other items? Let us know what you would like to make and donate.
- Shop store or online sales for individual items you might like to donate for baskets.

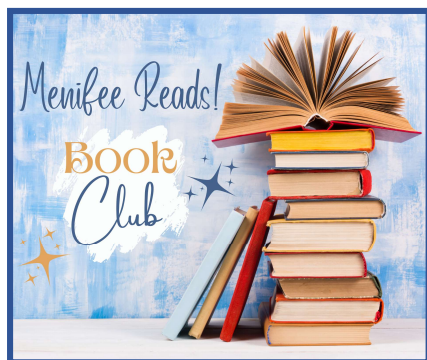
All donations need to be received by Sunday, June 1, 2025, but can be donated any time before that. Please see Candy Pellechio if you have questions.

ARE YOU READY FOR SOUP-ER BOWL SUNDAY?

Whether you are a football fan or not, I think it's safe to say we're all fans of tackling hunger! Faith's Soup-er Bowl will begin soon and will be played through February 9th! Keep an eye out for the containers in the Narthex, then bring cans of soup to the church and put them in the container for the team you're cheering for! AFC? NFC? It doesn't matter! In our Soup-er Bowl everyone wins!!



Menifee Reads! Adds a Day Group!



Menifee Reads! is growing! The new day group starts on Thursday, February 20 at 2:00!

The day group will read the same book, and have the same discussion format as our evening group.

The Menifee Reads! evening group will meet next on February 19th at 7:00pm. We are reading "By Any Other Name" by Jodi Picoult for our February book.

Readers unite and read together in 2025! The group is delightful and engaging, so do not miss out! And join the Menifee Reads! Facebook Group to follow along!

<https://www.facebook.com/groups/956863713121804>

For book club questions see Candy Pellechio or Kathy Kent!

Vagabond Offers LOVE to Menifee



The Vagabond Theatre Group of Menifee Annual Fundraiser presents an evening of entertainment on Valentine's Day weekend.

Enjoy a table-seated evening of romance, comedy and fun on Saturday, February 15, as the Vagabond Theatre Group (VTG) of Menifee showcases the valley's talent with its LOVE cabaret/variety show here at Faith Lutheran Church in Menifee. Light refreshments will fuel the laughter.

"Community support of our non-profit organization will enable Vagabond to follow up our inaugural year with a great lineup of shows in 2025," says Sarah Gibbon, executive director and founder of the VTG. "Why not celebrate Valentines Day by sharing some love with your local theatre group?"

The LOVE performers include Joey Mercado, Tatiana Astroza, Joel Vig, Debradawn Shockey, Angela Mona, Meriam Shams, Cheri Gilbert, Lauren

Jimenez, Paul Kellerman, Julianne Cherland, Meghann Heinrich, Piper Harding, Kit Fortier, Kevin Clark, Josh Somers, and Stephanie Yglesias.

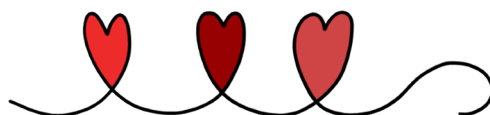
"LOVE" will be hosted by Kristofer James and is directed by Kami Martin.

"In addition to showcasing excellent local talent to our neighbors," says Martin, "we'll also be bringing the show to the wonderful residents at the WellQuest of Menifee Lakes senior living center as part of our Vagabond Menifee outreach mission."

Several local businesses in Menifee are sponsoring the event, including Romero Dental Care, Tommy's Express Car Wash, Melody Thai Cuisine, and Asian Mini Mart.

Get your tickets for the LOVE cabaret and fundraiser now at www.vagabondmenifee.org: \$20 for admission only or \$40 to enjoy the food offerings. Doors open at 6:30pm with entertainment starting at 7:00pm. The Faith Lutheran Church is located at 28200 Portsmouth Drive in Menifee. All profits help fund VTG's 2025 season.

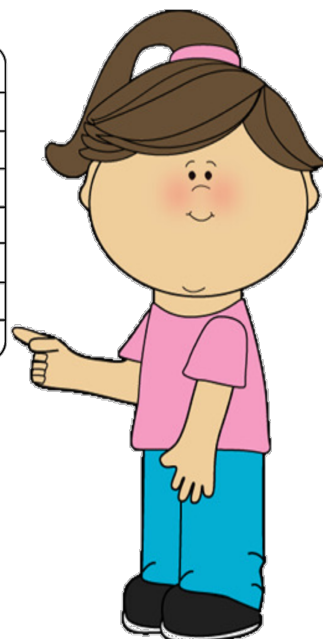
The Vagabond Theatre Group of Menifee is a multi-disciplinary, non-profit performing arts organization founded in the Inland Empire for cultivating and enriching local communities with imitable performing arts productions, top-tier classes, and unique outreach programs.



To help you plan ahead, this is a list of the events that recur each month:

- **Snip 'N Stitch:** 1st and 3rd Thursday at 9:00
- **Worship & Music:** 1st Tuesday at 10:00
- **Hymn Planners:** 2nd Tuesday at 10:00
- **Outreach Team:** 2nd Tuesday at 2:30
- **WELCA Bible Study:** 2nd Wednesday at 10:00 and 3rd Thursday at 6:00 pm
- **WELCA Board:** 2nd Tuesday at 12:30
- **Meniffee Reads!:** 3rd Wednesday at 7:00 and (starting in Feb.), the Thursday following the 3rd Wednesday (either the 3rd or 4th Thursday) at 2:00pm
- **4+1 Group:** 3rd Tuesday at 10:00
- **Fellowship Team:** 3rd Tuesday at 2:00
- **Stewardship Team:** 3rd Friday at 10:00
- **Finance Team:** 4th Wednesday at 1:00
- **Council:** the last Monday of each month at 1:00
- **Cheer Team:** 2nd Thursday at 4:00
- **Pr. Ken's Zoom Bible Study:** 2nd and 4th Thursday at 7:00
- **Strategic Planning:** 2nd Wednesday at 1:00
- **Al-Anon:** Every Friday at 10:30

Fun at Faith!						
S	M	T	W	T	F	S



Valentine's Day

Valentine's Day originated as a Christian feast day honoring a martyr named Valentine and through later folk traditions, it has also become a significant cultural, religious and commercial celebration of romance and love in many regions of the world.

Faith Lutheran Church

28200 Portsmouth Drive, Meniffee, CA 92586

Office Phone: (951) 679-1518 | **Email:** FaithLutheranMeniffee@gmail.com

Website: www.faithmeniffee.com

Church Office Hours: Tues & Thurs 8:30am-5:00pm | Fri 8:30am-12:30pm

February 2025

February 2025

March 2025

Su	Mo	Tu	We	Th	Fr	Sa
2	3	4	5	6	7	8
9	10	11	12	13	14	15
16	17	18	19	20	21	22
23	24	25	26	27	28	
						1

SATURDAY

FRIDAY

THURSDAY

WEDNESDAY

TUESDAY

MONDAY

SUNDAY

Jan 26	27	28	29	30	31	Feb 1
2 9:30am Worship Service-Pr Rex	3 7:00pm Vagabond	4 10:00am Worship & Music 7:00pm Vagabond	5 10:00am Mary Circle Bible Study 6:00pm Vagabond	6 9:00am Snip 'N Stitch 4:00pm Bingo	7 8:00pm 10:30am Al-Anon	8 9:30am Pr. Minnie 2:00am 9:30am Pr. Minnie-Pr Meeting
9 9:30am Worship Service-Pr. Karen 11:00am "Thank You" Reception for Pr. Karen	10 1:00pm Strategic Planning	11 10:00am Hymn Planners 12:30pm WELCA Board 2:30pm Outreach Team 6:00pm Vagabond	12 10:00am Mary Circle Bible Study 6:00pm Vagabond	13 4:00pm Cheer/Eucharistic Team 6:00pm Vagabond 7:00pm Pr. Ken's Zoom Bible Study	14 10:30am Al-Anon 1:00pm Transition Team 6:00pm Vagabond	15 6:00pm Vagabond
16 9:30am Worship Service-Pr. Shane 11:00am Transition Team Meeting	17 6:30pm Vagabond	18 10:00am 4 Plus 1 Group-In Person 2:00pm Fellowship Team 6:30pm Vagabond	19 7:00pm Meniffee Reads! Book Club	20 9:00am Snip 'N Stitch 1:00pm Finance Team-In Person & 2:00pm Meniffee Reads! Book Club 6:00pm WELCA Bible 6:30pm Vagabond	21 10:00am Stewardship 10:30am Al-Anon	22 6:00pm Big Band Rehearsal
23 Forecaster Deadline 9:30am Worship Service-Pr. Shane 10:30am Annual Congregational Meeting 6:30pm Vagabond	24 1:00pm Council-In Person & Zoom 6:30pm Vagabond	25 6:30pm Vagabond	26	27 6:30pm Vagabond 7:00pm Pr. Ken's Zoom Bible Study	28 10:30am Al-Anon 1:00pm Transition Team	Mar 1

Forecaster