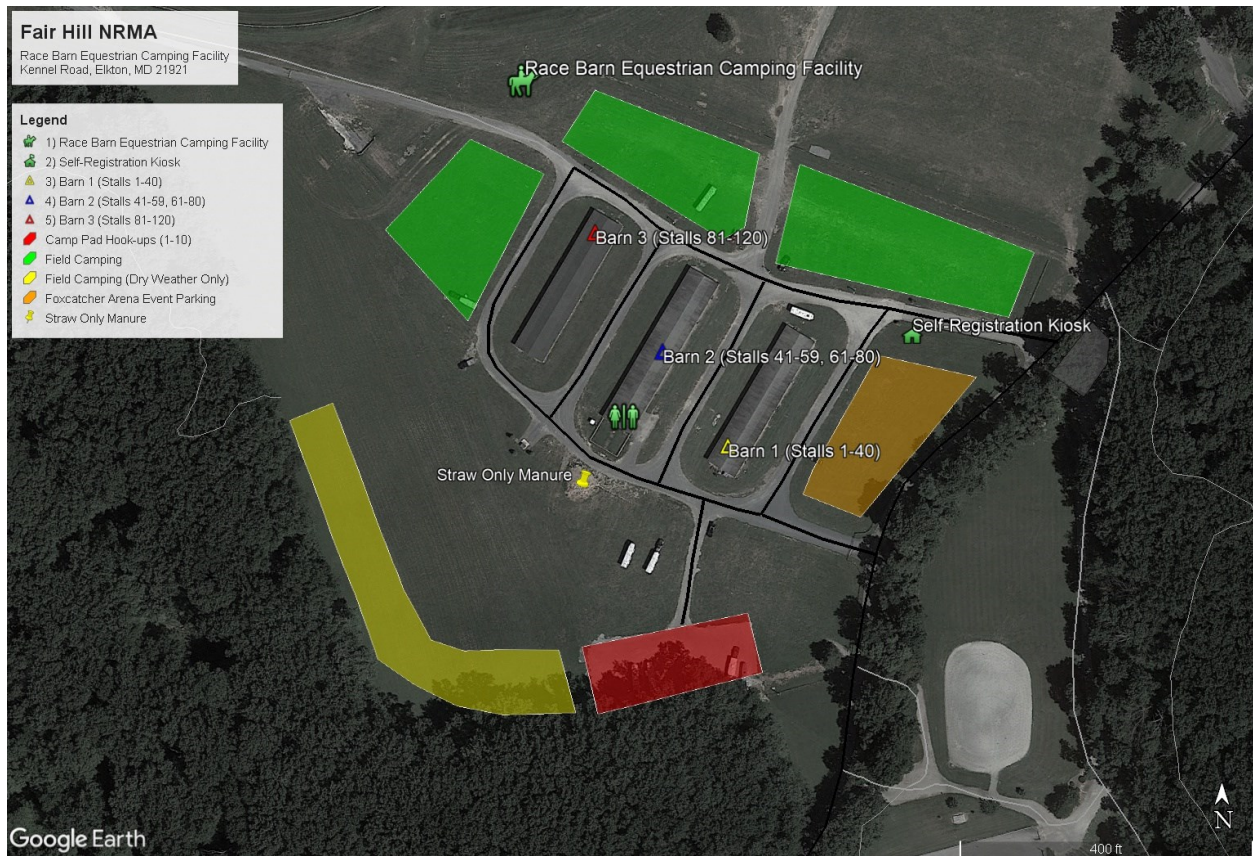


Race Barn Equestrian Camping Reservations

Located on the perimeter of Fair Hill NRMA's developed zone sits the quintessential Race Barn Equestrian Camping Facility. The facility is comprised of 10 Camp Pads equipped with water and 30-amp electric hook-up pedestals, ample field camping locations for full-service trailers and car campers alike, and 119 box stalls to securely bed your equine companion after a rewarding day at the park. The Race Barn Equestrian Camping Facility can serve as an access point to Fair Hill for a weekend trail ride with friends and family on the park's expansive network of trails, while also functioning as a Headquarters Location for an Equestrian-focused special event.

Visit Fair Hill NRMA's [Website](#) to submit your reservation request today!



Equestrian Camping Rules and Regulations

1. Equestrian Camping reservations requests must be made online by completing the [Google Form](#) located on Fair Hill NRMA's [Web Page](#). **PLEASE NOTE** that submitting the online form constitutes a request only, and does not guarantee your reservation. Fair Hill NRMA Administrative staff will review and process the request, generate a reservation form, and send an email confirming the reservation. Visa or MasterCard payment, including a \$10 Reservation Fee, will then be processed over the phone. Equestrian campers are required to pay in full at the time the reservation is processed. If you would like to check availability before making a request, please email fairhill.dnr@maryland.gov with your options and we will respond to your inquiry.
2. **By accepting the Reservation Confirmation form, the equestrian camper agrees to comply with all of the Maryland Park Service: Fair Hill NRMA rules and regulations.** It is the equestrian camper's responsibility to read, understand, and comply with the terms and conditions listed within this Reservation Packet.
3. Weekend reservations, which include Friday and / or Saturday nights, made between April 1st and October 31st require a two night minimum stay. Single-night, weekend reservations are acceptable during the "off-season" months of November through March.
4. Changes or cancellations made within 24 hours of the date the reservation was initially confirmed are allowed without an additional fee. Changes or cancellations made beyond the first 24 hours will result in a \$5.00 Change Fee per occurrence up until one week prior to arrival date. Equestrian campers who cancel within a one week window prior to arrival date will be charged 25% of total reservation fees in addition to the non-refundable \$10.00 reservation service charge. **REFUNDS WILL NOT BE PROCESSED FOR SAME DAY CANCELLATIONS, NO-SHOWS OR EARLY DEPARTURES.**
5. Per Maryland State Regulation, equines stabling at Fair Hill NRMA's Race Barn Equestrian Camping facility or participating in an equestrian event anywhere on Fair Hill NRMA property are required to have evidence of a negative Coggins test, taken sometime within the previous twelve months.
6. Check-in/Check-out time at the Race Barn Equestrian Camping Facility is 3:00 pm. Early arriving guests are strongly encouraged to access the park and trail ride from one of Fair Hill's [five day use parking areas](#). If campers wish to set-up before the 3:00 pm Check-in time, they must contact the Fair Hill Duty Ranger (410-218-1698) to ensure their site and stall are clean and available. Early arriving guests will incur an additional day's cost. Guests who are not reasonably packed-up by the 3:00 pm Check-out time may also incur an additional cost.
7. All Equestrian Camping guests must STOP, and check-in at the self-registration kiosk located along the entrance road leading into the Race Barn Equestrian Camping Facility. Additionally, all campers must fill out the Stall ID Cards attached to the Registration Box and must affix the completed card to the door of your stall. The Stall ID Cards must be displayed for the entirety of the camping reservation.
8. Horses must be secured in assigned stalls, with only one horse per stall. Portable paddocks and / or corals are NOT permitted. Please do NOT tie horses to posts or stall doors.
9. Equestrian campers and event participants stabling within the Race Barn Equestrian Camping Facility are required to use STRAW ONLY for bedding. UNDER NO CIRCUMSTANCES SHALL CHIPS, PAPER, OR AN ALTERNATIVE MATERIAL BE USED. All straw bedding and manure must be removed by the occupant and placed in the designated area near the south end of Barn 2. Stalls must also be swept clean by the occupant before departure. For stalls not properly cleaned, campers will be charged a cleaning fee of \$25 per stall.
10. Quiet hours must be respected between 10:00 pm and 7:00 am.

11. The use of quiet generators is permitted within the Race Barn Equestrian Camping Facility. However, generators may not be used during established quiet hours. Fair Hill Park Management may make limited exceptions based on medical necessity.
12. Campfires are **ONLY** permitted in designated fire rings, located at each Equestrian Camp Pad. Raised metal bowls **MUST** be utilized by campers occupying a Field Camping site, which **MUST BE OUTSIDE** the Race Barn perimeter roadway. If using a raised metal bowl, please allow the coals to cool before discarding into the yellow metal drum labeled "Ash". Do not discard coals directly into the dumpster. Due to concerns associated with several invasive insects - including the Spotted Lanternfly, Emerald Ash Borer, and Walnut Twig Beetle – Fair Hill NRMA does not allow outside sources of firewood to be brought onto the property. All firewood **MUST** be purchased from the rack located at the south end of Barn 2. The cost is \$5 per bundle. Additionally, firewood cannot be removed from the Fair Hill NRMA property.
13. Pets are welcome to visit the Race Barn Equestrian Camping Facility, though they must be leashed and / or secured by their owners at **ALL TIMES**.
14. Vehicles and / or trailers **MAY NOT** be parked on the perimeter roadways OR along the access roadways between the Race Barns, as these roads serve as FIRE LANES and AVENUES FOR EMERGENCY VEHICLES. Parking and camping on the natural surface areas between the Race Barns and inside the access road loop is prohibited as it creates ruts, inhibits grass growth, and inhibits emergency response.
15. Washing of vehicles and trailers at the camping facility is prohibited.
16. The consumption and / or possession of an open container of alcohol at the Race Barn Equestrian Camping Facility is prohibited and is a direct violation of Park Service policy. Similarly, smoking is prohibited in all buildings including stalls, barns, and restrooms.
17. Any wood or blocks used for chocking tires or leveling trailers **MUST** be removed from the camping facility by the site occupant. Discarded objects left within field camping locations may cause significant damage to mowing equipment.
18. Lights, light fixtures, and panel boxes are not to be altered. Additionally, plugging camping units or other electrical devices into outlets within the Race Barn Buildings is not permitted. Electrical outlets at the barns are for horse fans/clippers **ONLY**.
19. All park users are requested to stay on designated trails that navigate through the hayfields during the hay growing and harvesting season.

PLEASE NOTE: THE BATHHOUSE IS WINTERIZED FROM EARLY NOVEMBER TO EARLY APRIL AND WILL NOT BE AVAILABLE TO CAMPERS DURING THAT WINDOW OF TIME

When engaging in equestrian activity on property of the State (including, but not limited to: stabling, equine camping, transporting, feeding, walking, grooming, mounting, exercising, riding, or otherwise handling a horse), you accept the inherent risks involved, you expressly assume all responsibility for the horse's care and expenses during and as a result of the activity, and you expressly assume all risks of harm, including without limitation all costs of medical care and treatment and diminution of value resulting from any harm, injury, or even mortality of yourself and / or horse(s) arising from participation in the equestrian activity.

Further, you voluntarily agree and warrant to Release and Holding Harmless the State of Maryland, the Department of Natural Resources, and any affiliates, divisions, agents, employees, or contractors from any liability, action, causes of action, losses, damages, debts, claims, incidents, and demands of any and every kind which may occur or you may suffer either during, after, or as a result of participation in the equestrian activity or as a result of the acts of omission, including negligent acts or omissions, of any employee, agent, contractor or staff. *It is mandatory to immediately report all injuries, accidents, damages and sensitive incidents to Fair Hill NRMA Management at (410) 398-1246 (Mon.-Fri. 8:00 am - 4:00 pm) or to the Duty Ranger at (410) 218-1698. FOR PARK EMERGENCIES CALL (410) 260-8888 or 911.*