

**LAND FOR 18 SINGLE FAMILY LOTS  
APPROXIMATELY 7.8 ACRES  
“BRENTWOOD ESTATES” SUBDIVISION**

**ROUND LAKE, ILLINOIS**



**Land and Real Estate Advisors**

Chris Tiedeman, Listing Agent

[chris@landpartnersllc.com](mailto:chris@landpartnersllc.com)

847.370.9100 (Cell)

**LAND PARTNERS, L.L.C.**

3405 N. Kennicott Avenue, Suite A

Arlington Heights, Illinois 60004

847.394.8000 (o)

[WWW.LANDPARTNERSLLC.COM](http://WWW.LANDPARTNERSLLC.COM)



**LAND FOR 18 SINGLE FAMILY LOTS  
APPROXIMATELY 7.8 ACRES  
“BRENTWOOD ESTATES” SUBDIVISION**

ROUND LAKE, ILLINOIS

**PROPERTY FEATURES:**

**PRICE: \$1,399,000**

**PROPERTY LOCATION:**

This parcel is located on the north side of Townline Road, and on the west side of Cedar Lake Road, in Central Lake County in the Grayslake School District.

**SUBJECT PROPERTY:**

The subject property consists of land for 18 single family homes in the prime area of Round Lake. Lot sizes range from 12,000 square feet to 20,000 square feet. Average of 14,900 square feet with 80 ft minimum lot width.

**IMPROVEMENTS:**

Final Engineering complete with landscape plan. Annexation agreement and plat recorded. Straightforward, single road, site development plan.

**SCHOOLS:**

Site located in School Districts 46 and 127. Newer K-8 school one-half mile east on Townline Road.

**NOTE:**

All utilities near site. Ready for development.



Land and Real Estate Advisors

Chris Tiedeman, Listing Agent

chris@landpartnersllc.com

847.370.9100 (Cell)

LAND PARTNERS, L.L.C.

3405 N. Kennicott Avenue, Suite A

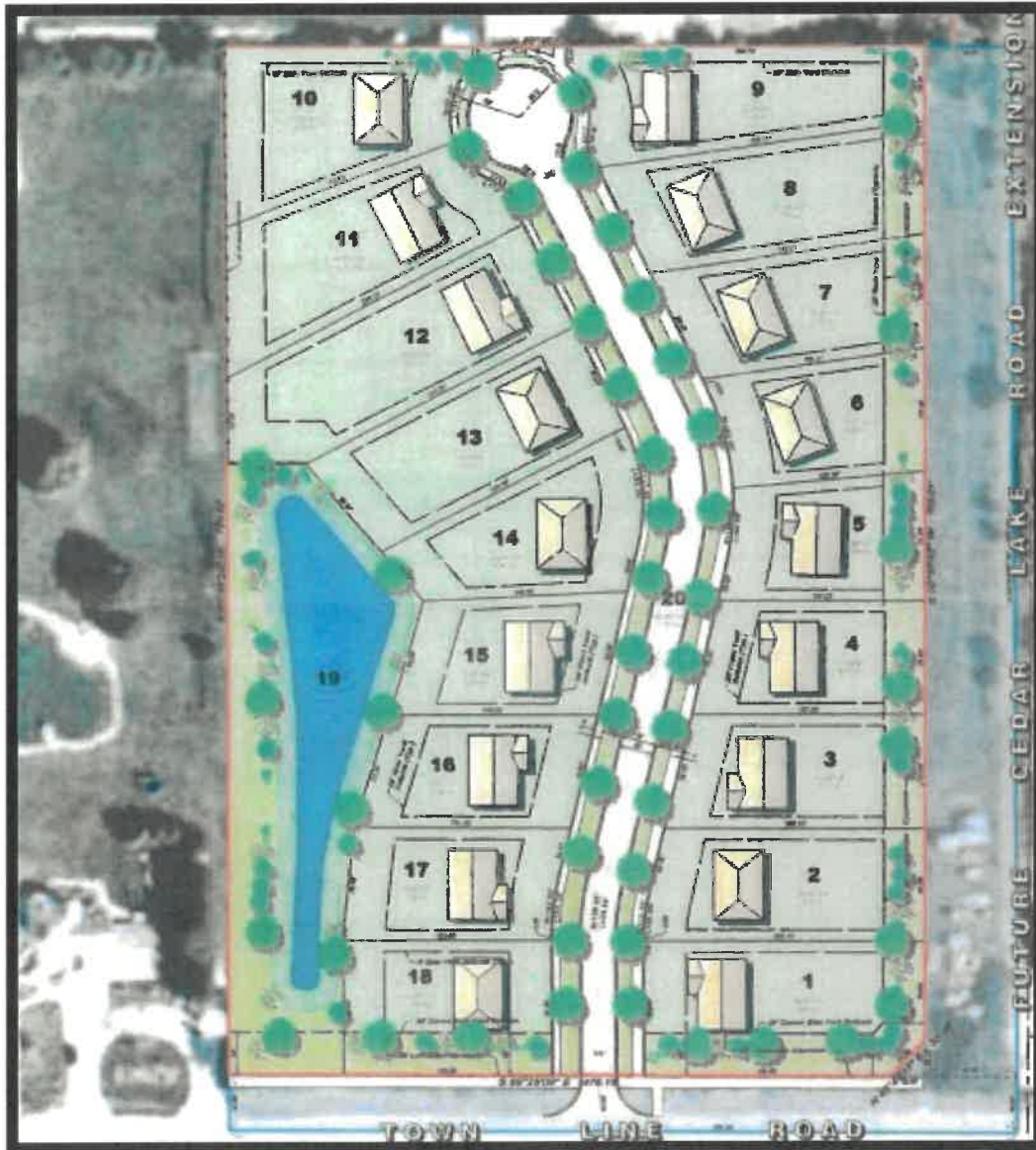
Arlington Heights, Illinois 60004

847.394.8000 (o)

WWW.LANDPARTNERSLLC.COM



**LAND FOR 18 SINGLE FAMILY LOTS**  
**APPROXIMATELY 7.8 ACRES**  
**“BRENTWOOD ESTATES” SUBDIVISION**  
ROUND LAKE, ILLINOIS



Land and Real Estate Advisors

Chris Tiedeman, Listing Agent

Chris@landpartnersllc.com

847.370.9100 (Cell)

LAND PARTNERS, L.L.C.

3405 N. Kennicott Avenue, Suite A

Arlington Heights, Illinois 60004

847.394.8000 (o)

WWW.LANDPARTNERSLLC.COM



**LAND FOR 18 SINGLE FAMILY LOTS  
APPROXIMATELY 7.8 ACRES  
“BRENTWOOD ESTATES” SUBDIVISION  
ROUND LAKE, ILLINOIS**

**SCHOOLS**

As Per GreatSchools.org, the above site is serviced by the following schools:

<b><u>Name of School</u></b>	<b><u>Grades</u></b>	<b><u>Students</u></b>	<b><u>Type</u></b>
<b>Park East School 400 West Townline Road Round Lake, Illinois 60073 (District 46)</b>	<b>K-4</b>	<b>376</b>	<b>Public</b>
<b>Park West School 400 West Townline Road Round Lake, Illinois 60073 (District 46)</b>	<b>5-8</b>	<b>429</b>	<b>Public</b>
<b>Grayslake Central High School 400 North Lake Street Grayslake, Illinois 60030 (District 127)</b>	<b>9-12</b>	<b>1335</b>	<b>Public</b>



Land and Real Estate Advisors

Chris Tiedeman, Listing Agent  
chris@landpartnersllc.com  
847.370,9100 (Cell)

LAND PARTNERS, L.L.C.  
3405 N. Kennicott Avenue, Suite A  
Arlington Heights, Illinois 60004  
847.394.8000 (O)  
WWW.LANDPARTNERSLLC.COM

