

**OUTSTANDING INFILL REDEVELOPMENT OPPORTUNITY  
APPROXIMATELY 2.14 ACRES**

**550 E. 22ND STREET  
LOMBARD, ILLINOIS**



Land and Real Estate Advisors

Chris Tiedeman, Listing Agent

Chris@landpartnersllc.com

847.370.9100 (C)

**LAND PARTNERS, L.L.C.**

3405 N. Kennicott Avenue, Suite A

Arlington Heights, Illinois 60004

847.394.8000 (o)

WWW.LANDPARTNERSLLC.COM



**OUTSTANDING INFILL REDEVELOPMENT OPPORTUNITY  
APPROXIMATELY 2.14 ACRES**

**550 E. 22ND STREET  
LOMBARD, ILLINOIS**

**PROPERTY FEATURES:** PRICE: ALL OFFERS WILL BE CONSIDERED

**LOCATION DESCRIPTION:** FROM I-355 GO EAST ALONG BUTTERFIELD ROAD TO HIGHLAND AVENUE THEN GO NORTH AT 22ND STREET, GO EAST TO SITE WHICH IS LOCATED JUST EAST OF FAIRFIELD ROAD ALONG THE NORTH SIDE OF 22ND STREET.

**PROPERTY DESCRIPTION:** APPROXIMATELY 2.14 ACRES WITH GREAT ACCESS TO SHOPPING, RESTAURANTS, YORK TOWN MALL, AND EXPRESSWAYS.

**HIGHLIGHTS:** CURRENT PLAN SHOWS 26 TOWNHOMES UNITS. EFFICIENT SITE TO IMPROVE AND LOW IMPACT FEES AND GOOD SCHOOLS. BUILD AS "FOR SALE" OR AS "FOR RENT." GOOD COMPS IN THE AREA FOR EITHER SCENARIO. SITE HAS BEEN CLEARED OF ALL STRUCTURES. ADDITIONAL MATERIALS AVAILABLE UPON REQUEST.

**NOTE:** WELL LOCATED SITE WITH A MUNICIPALITY THAT IS DEVELOPER/BUILDER FRIENDLY.



Land and Real Estate Advisors

Chris Tiedeman, Listing Agent

Chris@landpartnersllc.com

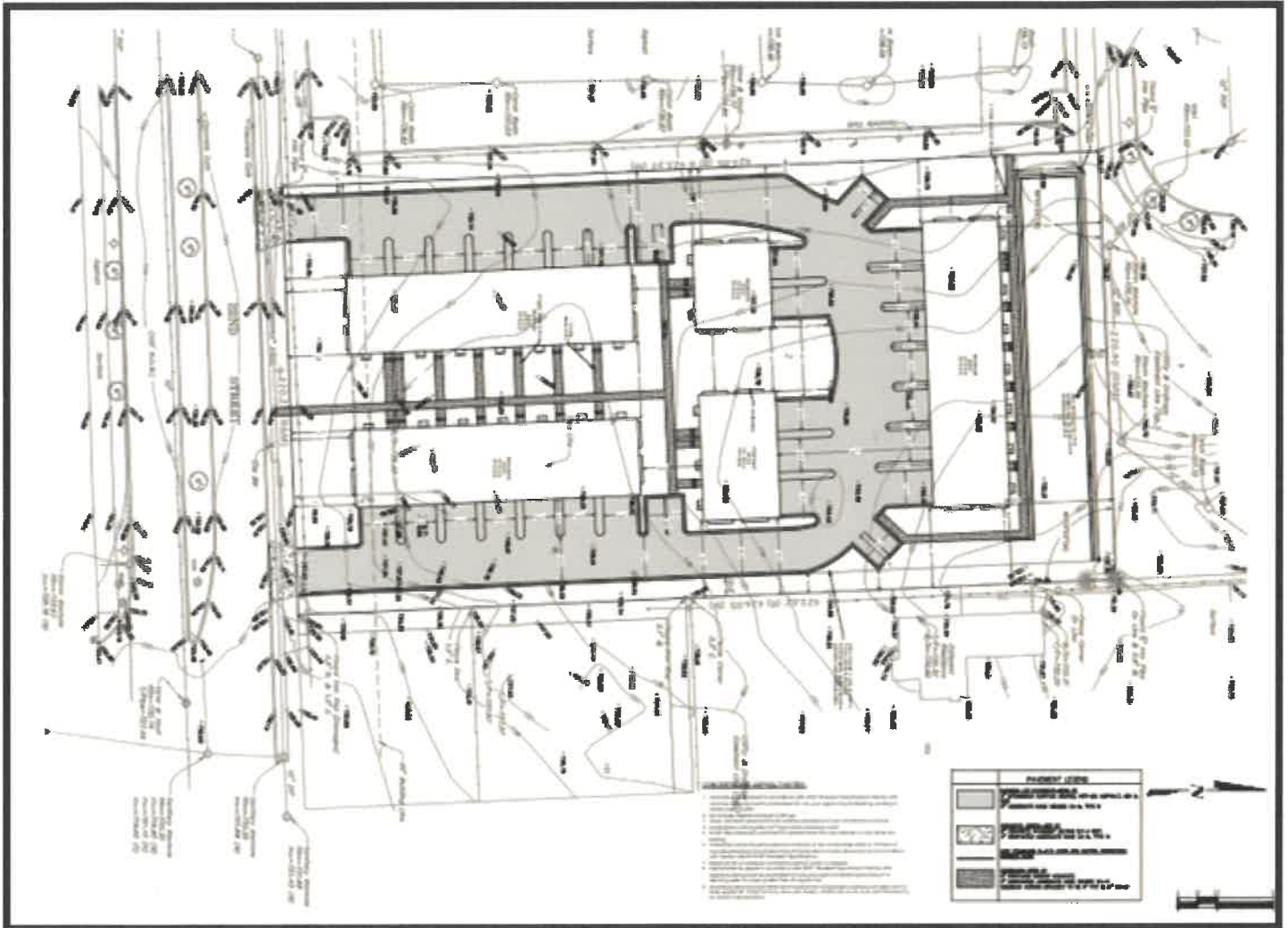
847.370.9100 (C)

LAND PARTNERS, L.L.C.  
3405 N. Kennicott Avenue, Suite A  
Arlington Heights, Illinois 60004  
847.394.8000 (o)  
WWW.LANDPARTNERSLLC.COM



**OUTSTANDING INFILL REDEVELOPMENT OPPORTUNITY  
APPROXIMATELY 2.14 ACRES**

**550 E. 22ND STREET  
LOMBARD, ILLINOIS**



Land and Real Estate Advisors

Chris Tiedeman, Listing Agent

Chris@landpartnersllc.com

847.370.9100 (C)

LAND PARTNERS, L.L.C.

3405 N. Kennicott Avenue, Suite A

Arlington Heights, Illinois 60004

847.394.8000 (o)

WWW.LANDPARTNERSLLC.COM





**OUTSTANDING INFILL REDEVELOPMENT OPPORTUNITY**  
**APPROXIMATELY 2.14 ACRES**

**550 E. 22ND STREET**  
**LOMBARD, ILLINOIS**



**CURRENT DRAWING FOR PLAN FOR 26 TOWNHOMES UNITS**



Land and Real Estate Advisors

Chris Tiedeman, Listing Agent

Chris@landpartnersllc.com

847.370.9100 (C)

LAND PARTNERS, L.L.C.

3405 N. Kennicott Avenue, Suite A

Arlington Heights, Illinois 60004

847.394.8000 (o)

WWW.LANDPARTNERSLLC.COM



**OUTSTANDING INFILL REDEVELOPMENT OPPORTUNITY**  
**APPROXIMATELY 2.14 ACRES**

**550 E. 22ND STREET**  
**LOMBARD, ILLINOIS**



Land and Real Estate Advisors

Chris Tiedeman, Listing Agent

Chris@landpartnersllc.com

847.370.9100 (C)

**LAND PARTNERS, L.L.C.**

3405 N. Kennicott Avenue, Suite A

Arlington Heights, Illinois 60004

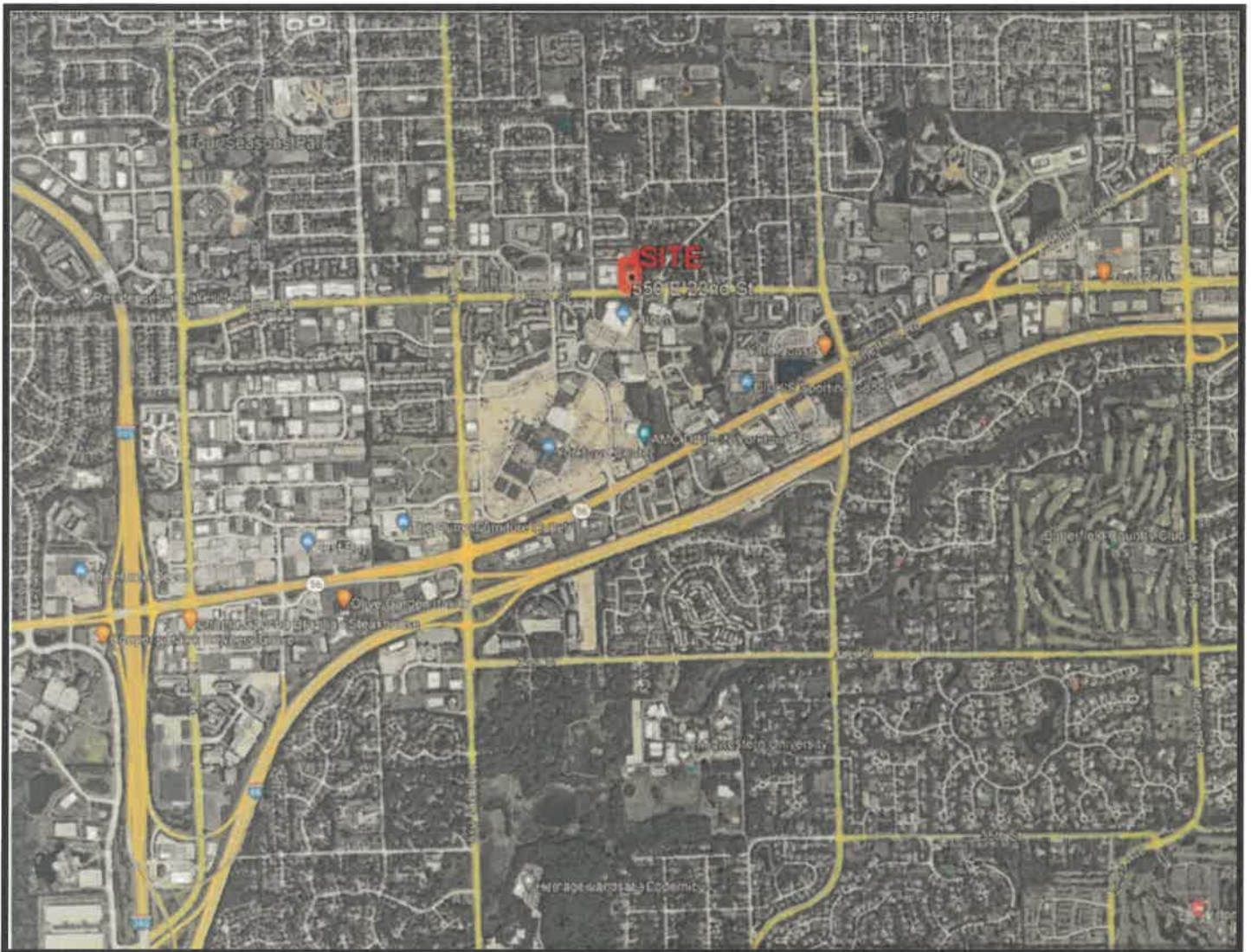
847.394.8000 (o)

WWW.LANDPARTNERSLLC.COM





**OUTSTANDING INFILL REDEVELOPMENT OPPORTUNITY**  
**APPROXIMATELY 2.14 ACRES**  
**550 E. 22ND STREET**



Land and Real Estate Advisors

Chris Tiedeman, Listing Agent

Chris@landpartnersllc.com

847.370.9100 (C)

**LAND PARTNERS, L.L.C.**

3405 N. Kennicott Avenue, Suite A

Arlington Heights, Illinois 60004

847.394.8000 (o)

WWW.LANDPARTNERSLLC.COM

