

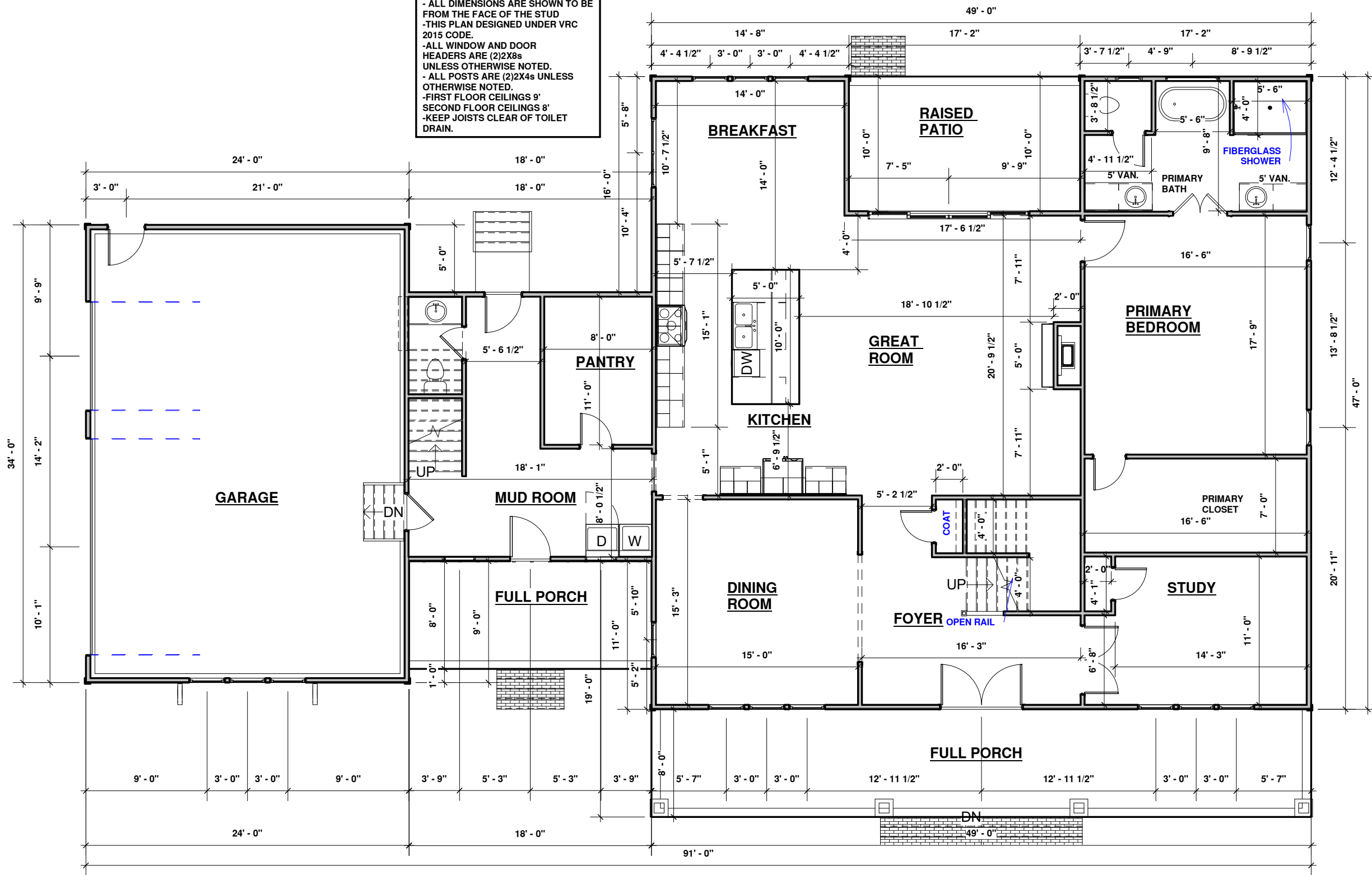
② 1ST FLOOR  
1/16" = 1'-0"

③ 2ND FLOOR  
1/16" = 1'-0"

SQUARE FOOTAGE	
Name	Area
FIRST FLOOR	2487 SF
SECOND FLOOR	1805 SF
GARAGE	816 SF
RAISED PATIO	177 SF
FRONT PORCH	392 SF
OPTIONAL REC AREA	982 SF

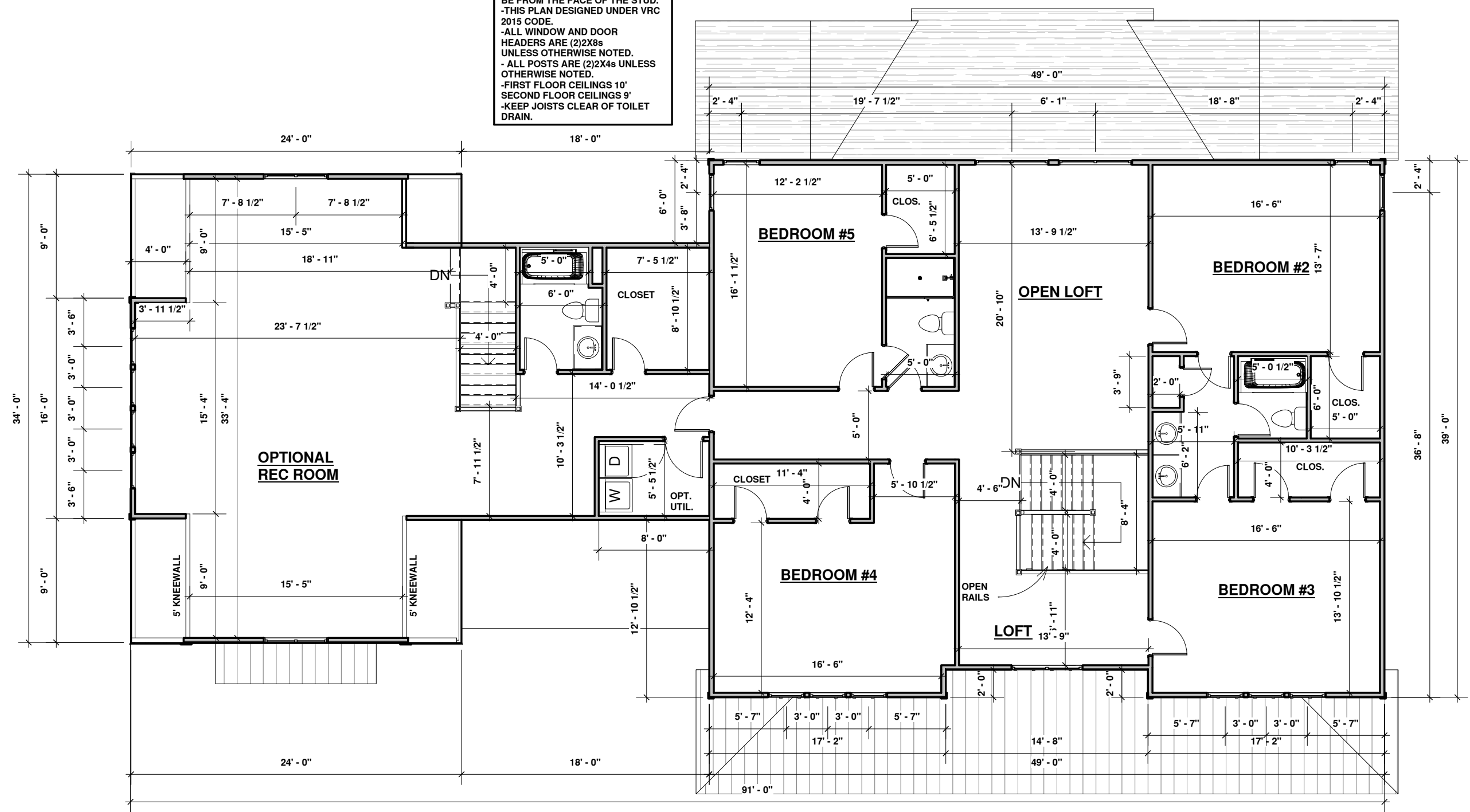
TOTAL FINISHED-4292 SQ. FT.

**NOTES:**  
 - ALL DIMENSIONS ARE SHOWN TO BE FROM THE FACE OF THE STUD  
 - THIS PLAN DESIGNED UNDER VRC 2015 CODE.  
 - ALL WINDOW AND DOOR HEADERS ARE (2)2X8s UNLESS OTHERWISE NOTED.  
 - ALL POSTS ARE (2)2X4s UNLESS OTHERWISE NOTED.  
 - FIRST FLOOR CEILINGS 9'  
 - SECOND FLOOR CEILINGS 8'  
 - KEEP JOISTS CLEAR OF TOILET DRAIN.



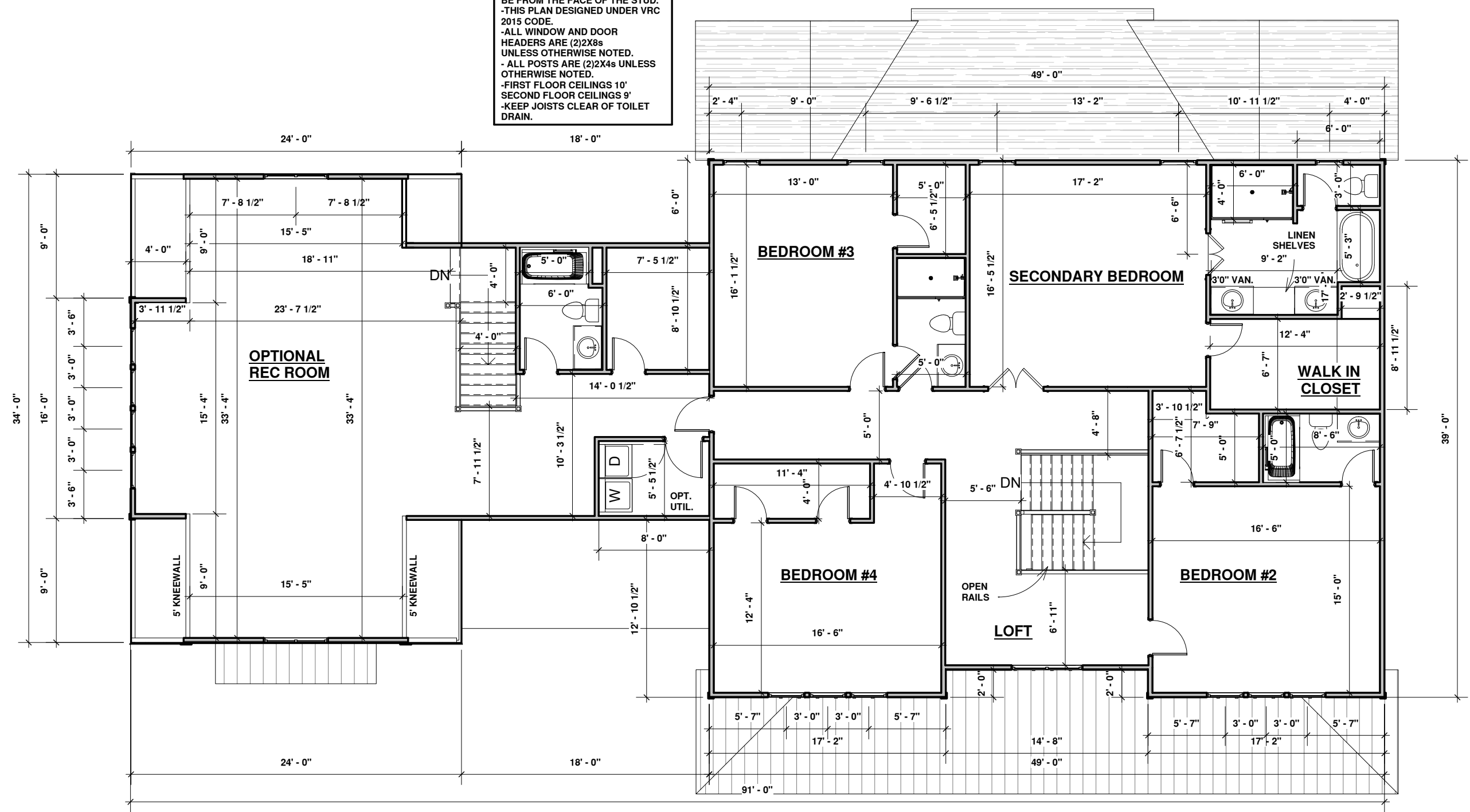
① 1ST FLOOR  
1/8" = 1'-0"

NOTES:  
-ALL DIMENSIONS ARE SHOWN TO BE FROM THE FACE OF THE STUD.  
-THIS PLAN DESIGNED UNDER VRC 2015 CODE.  
-ALL WINDOW AND DOOR HEADERS ARE (2)2X8s UNLESS OTHERWISE NOTED.  
-ALL POSTS ARE (2)2X4s UNLESS OTHERWISE NOTED.  
-FIRST FLOOR CEILINGS 10'  
SECOND FLOOR CEILINGS 9'  
-KEEP JOISTS CLEAR OF TOILET DRAIN.



1 2ND FLOOR  
1/8" = 1'-0"

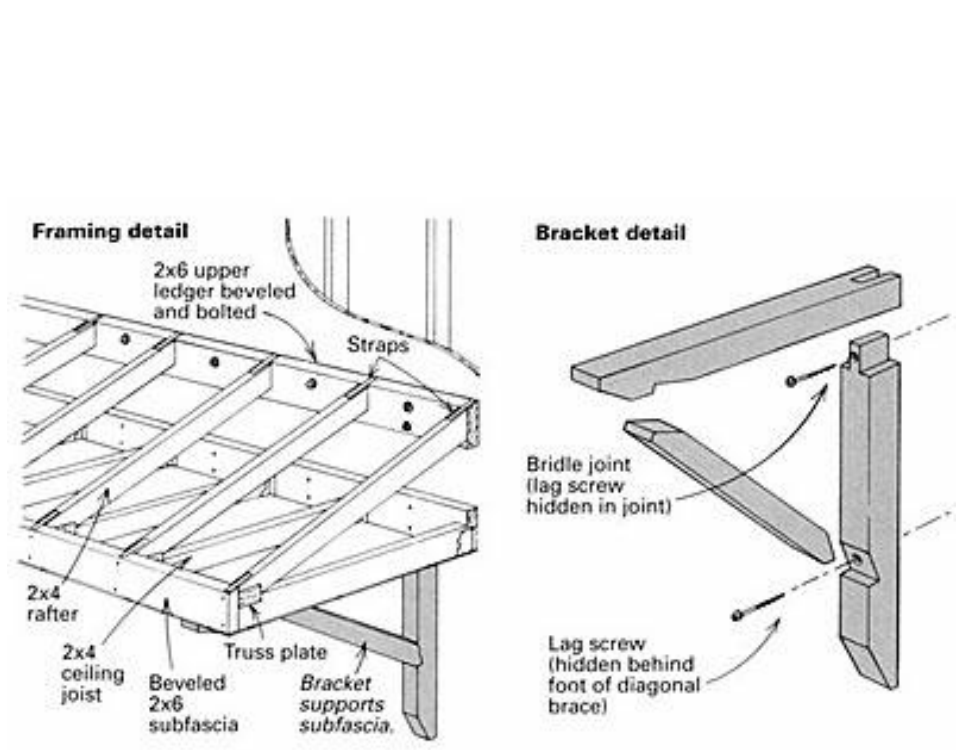
NOTES:  
 -ALL DIMENSIONS ARE SHOWN TO BE FROM THE FACE OF THE STUD.  
 -THIS PLAN DESIGNED UNDER VRC 2015 CODE.  
 -ALL WINDOW AND DOOR HEADERS ARE (2)2X8s UNLESS OTHERWISE NOTED.  
 -ALL POSTS ARE (2)2X4s UNLESS OTHERWISE NOTED.  
 -FIRST FLOOR CEILINGS 10'  
 SECOND FLOOR CEILINGS 9'  
 -KEEP JOISTS CLEAR OF TOILET DRAIN.



1 2ND FLOOR w/ upstairs master  
1/8" = 1'-0"



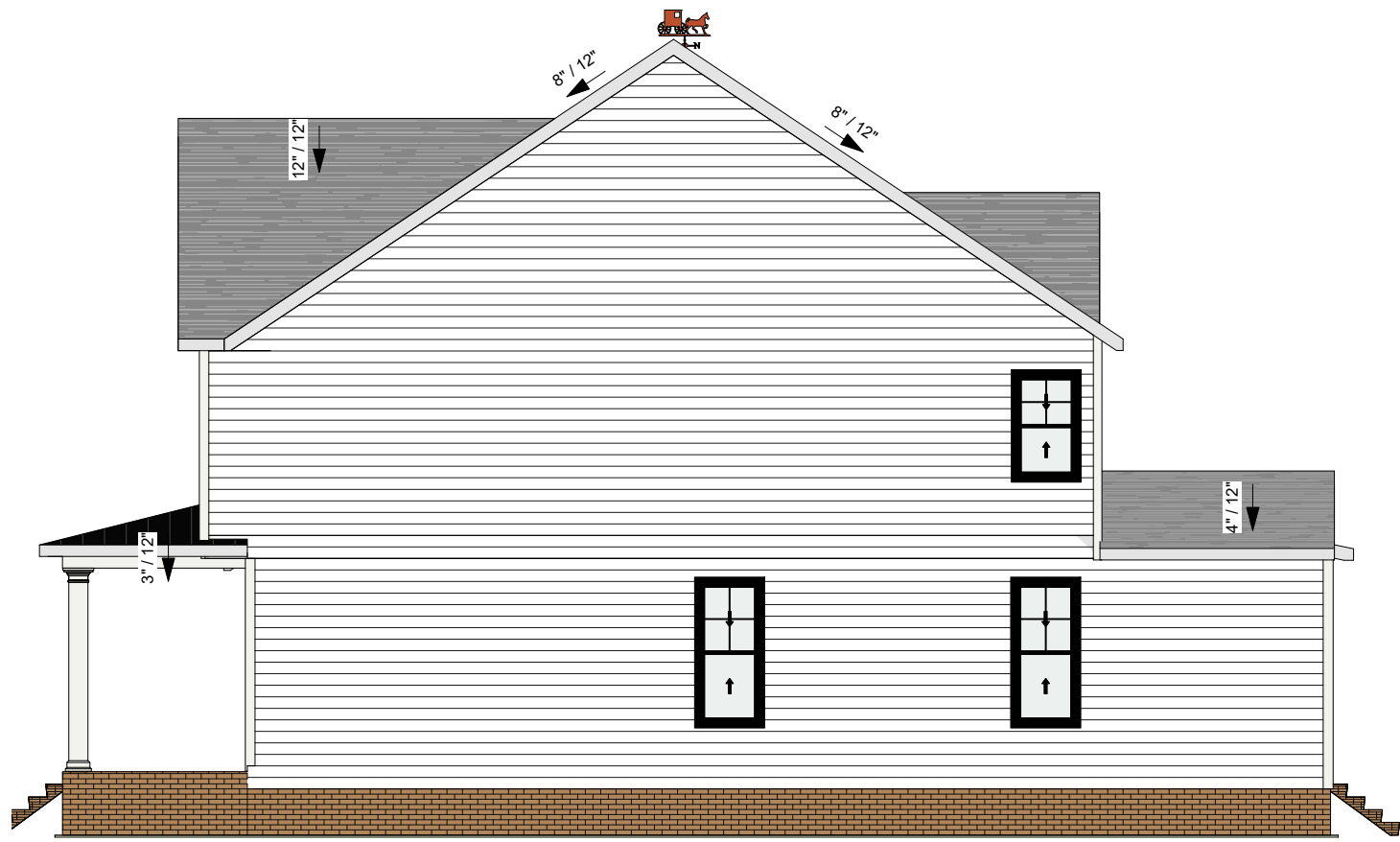
1 FRONT ELEVATION  
1/8" = 1'-0"



SHED AND BRACKET DETAIL-N.T.S.



2 LEFT ELEVATION  
1/8" = 1'-0"



① RIGHT ELEVATION  
1/8" = 1'-0"



② REAR ELEVATION  
1/8" = 1'-0"