



Cordless Smart Sweepers Wet & Dry MOP Cleaner

User Manual



Please read this instruction carefully before use, and keep it well for future reference and use the product properly

**FLOOR CARE
M8 SLIM**

Content

1. Safety Instruction	1
2. Components	2
3. How to use	3
3.1 Before use	3
3.2 Start to use.....	4
4. Maintenance	5
5. Specifications & Indications Code	6
5.1 Specifications	6
5.1 Lighting indication	6
5.2 Error code	6
6. Troubleshooting.....	7
7. After sale service.....	8

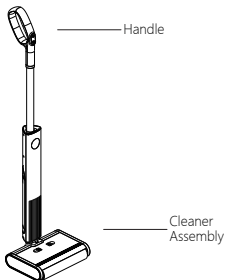
1. Safety Instruction

Please read all content in this manual carefully and operate the product as instructed.

- 1) For household indoor use only, please do not use in outdoor or commercial / industrial condition.
- 2) This product cannot be used by children under 8 or individuals with mental disorders, If necessary, please use it under the supervision of the guardian, do not let children sit on the product or play as a toy.
- 3) Please use this product under ambient temperature from 0°C to 40 °C.
- 4) Clean up the clothes/power cord/cable/wire etc which scattered on the floor, to avoid product been obstructed during cleaning.
- 5) DO NOT clean any burning or smoking objects, such as cigarette butt, match or burning ash etc which may cause fire.
- 6) DO NOT clean any sharp or large particle objects (Such as nail or blizzard etc.) to avoid danger or damage to the product.
- 7) DO NOT operate the product if the hair/clothes/fingers or any other body parts near the dust inlet port.
- 8) DO NOT lift or pull the product by power cord/USB cable, DO NOT operate the product with power cord, and keep the power cord/USB cable away from fire etc heat source.
- 9) DO NOT use damaged power cord and socket to charge. DO NOT use the product if it had been dropped or damaged or water come inside etc cause product can not operate properly, to avoid damage, please come to seller or manufacturer for maintenance / repair.
- 10) Please replace the USB charging cable from manufacturer or service company or professionally person if the USB charging cable had been damaged.
- 11) Please use original battery from manufacturer..
- 12) Please shut off the power and un-plug the adapter from socket before cleaning or maintenance the product.
- 13) DO NOT use sharp/hard cleaning tool to clean the rolling brush to avoid damage, and please clean up the dustbin / dirt water tank and rolling brush after every cleaning job done to keep it under good condition.
- 14) DO NOT put the product upside down or lied down on side, to avoid product falling or cause danger, or detergent/water etc liquid leak out damage to the furnishings and floor etc.
- 15) Disconnect the product from charging socket, turn it off, and remove the battery before disposal. Place the battery in a sealed plastic bag and dispose of it safely according to local environmental regulations.
- 16) It is prohibited to burn the product even if the product is severely damaged because the burning battery may explode.
- 17) If you will not use this product for a long period of time, turn off the product after it is fully charged and put the product in a cool and dry place. Charge the product at least once every three months to avoid over - discharge from the battery.
- 18) DO NOT put this product into the water in long time, to avoid damage or danger.
- 19) Please use this product in accordance with the manual. Liabilities for any loss or injury cause by improper use shall be solely borne by the user.

2. Components

Cleaner



Packing list



Handle*1



Cleaner
assembly
*1



Dirt water tank*1
(Installed inside cleaner)



Rolling brush*1
(Installed inside cleaner)



Fresh
Water Tank *1
(Installed inside cleaner)



Dustbin lid *1
(Installed inside cleaner)



Dustbin*1
(Installed inside cleaner)



Self-cleaning
base *1
(Installed inside cleaner)



Type C USB
charging cable
*1



User Manual
*1



Detergent *1
(Optional)

3. How to use

3.1 Before use

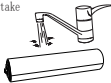
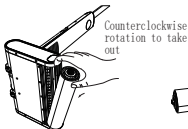
1 Installation

Install the product as per the sketch map below, when clatter sound show up and pinball buckle set into the buckle hole of the cleaner, installation successful.






2 Rolling brush soaked

Take out the rolling brush according to sketches below, put the rolling brush under tap water or put inside a water tank which water come over the brush, and re-install it after been soaked. (Suggest to squeeze out the extra water from the soaked brush to keep the brush in best cleaning working condition)



Modes

Modes	Function	How to operate
Wet mopping	Water tank release water to the brush to wet mop	Turn on the cleaner by press  button, default as wet mop mode
Dry mopping	Water tank shut off water spray to the brush to dry mop	Press  button to change into dry mop, press again to wet mop
Self - cleaning	Self-cleaning and dry the brush after finished cleaning	When cleaner on the base & under charging, press  to self-cleaning

3 How to use

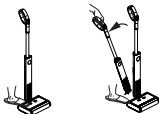
3.2 Start to use

1 Start to clean

Step on the cleaner gently as sketches below, pull down the handle slightly, after the "Clattler" sound, turn on the cleaner and start to clean. Press the power button again, will stop cleaning. Push the cleaner forward to clean dust, pull it back to MOP the floor.

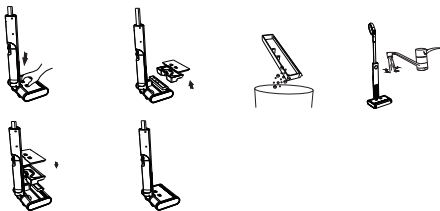
- Before use, please make sure battery is full, if in low battery, please full charge before use. Please full charge the battery over 6 hours before first use.
- DO NOT step on the cleaner in long time to avoid damage.

DO NOT use on carpets etc flooring



2 Clean dustbin

Turn off the cleaner, remove the dustbin lid, take out the dirt water tank and dustbin and empty it, wash the dirt water tank and dust bin and the cleaner by tap water, dry the dust bin, and install the dustbin & dirt water tank back to position, cover the lid. (DO NOT put the cleaner body inside water to avoid damage) Please refer to the sketches below.



3 Charging

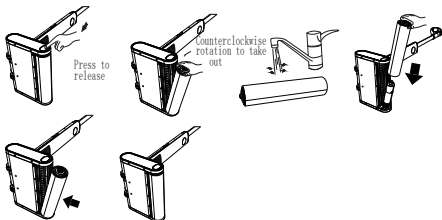
Uncover the charging port, plug in the TYPE-C charging USB cable into the charging port, connect the USB cable to the adapter (DC 5V) or USB socket to charge. When the charging indicator light on, battery starts to charge. Please keep the cleaner stand on the floor against the wall to avoid danger or injury when charging.



4. Maintenance

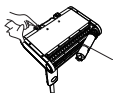
1 Clean rolling brush

Release the rolling brush lock, rotate the brush counterclockwise to take it out from fixture, wash the brush under tap water or water tank, use cleaning brush or wipes clean up the gap between rolling brush and housing. (Please wash & clean the brush after every using to keep it in good working condition and avoid cause smell)



2 Clean other components

After being used for long time, there will have dirt/ash stick onto the button of the cleaner, wheels and wiping tape, to keep it in good performance, please clean these parts regularly.



Clean wheels



Clean the wiping tape

5. Specifications & Indications Code

1 Specifications

Item	Specifications
Model No.	Floor Care M8 Slim
Power Supply	Input 100-240V~50/60Hz 0.4A, Output DC 5V 2.0A
Rated Power (W)	20W
Battery	7.4V 2000mAh
Working Hour (min)	40min Max
Charging time (H)	4~5H
Unit size (mm)	1100*285*235mm
Net Weight (kg)	≤ 2.7kg

2 Indicated lighting

Condition	Lighting indication
Power On	White+Blue lights On
Standby	Blue lights on and sleep in 1 min.
Cleaning	White+Blue lights On
Charging	Blue+White Breathing lights
Battery Full	Blue+White lights On

3 Error Code

When the cleaner faulted, Blue light will keep on or keep blinking, and the buzzer will show up "Beep" notice in different interval time, please refer to the code below:

No.	Fault	Indicator & Buzzer	Solution
1	Motor Jammed	Audio notice "Brush Jammed, please clean up"	Check and clean the rolling brush
2	Low Battery	Audio notice "Low battery, please charge the battery"	Please charge the battery

6. Troubleshooting

1. Cleaner do not work

- 1) Check if in low battery, and please full charge battery before use.

2. Cleaning performance dropped

- 1) Check if any damaged on rolling brush and wiping tape, and please replace new brush or once wiping tape once had damaged
- 2) Adjust the operating mode. push the cleaner forward will be collect dust mode, pull it backward will be MOP mode, will wash&mop the floor. please mop it several times if there are tough stains on the floor.

3. Can not charge the battery

- 1) Check if the adapter match the voltage etc requirement, and if power supply working.
- 2) Check socket, adapter, USB cable and the charging port connection correctly or not. Check power indicator light on or not.

4. Loud noise in cleaning

- 1) Check if the rolling brush had been installed correctly.
- 2) Check if there are dirt/ash stick onto the gap between brush & housing / Wiping tape, clean it if has.
- 3) Check if there are any objects stuck on the bottom of cleaner.

5. Leakage

- 1) Dirt water tank full, please empty it.
- 2) Please keep the cleaner and handle in vertical when lift up the cleaner to avoid water leaking from dust inlet port.
- 3) Dustbin lid not installed correctly, please re-install it correctly to avoid water leaking from dust inlet port.

Warm notice

If still can not fix the problem after try above steps, please try below:
Shut off the power, and trun it on again after 30 seconds to restart.

The product in this document is based on the actual product, and our company reserves the right to update the product. Any changes are subject to change without prior notice.

7. After-sale Service

Hazardous Substance Status

Toxic and Hazardous Substances and Elements	Parts					
	Plastic Casing	Printed Circuit Boards (PCB)	Power Cord	Battery	Metal Parts	Power Adapter
Lead (Pb)	○	×	×	×	○	×
Mercury (Hg)	○	○	○	○	○	○
Cadmium (Cd)	○	○	○	○	○	○
Hexavalent chromium (Cr (VI))	○	○	○	○	○	○
Polychlorinated biphenyls (PCB)	○	○	○	○	○	○
Polychlorinated Diphenyl Ethers (PCDE)	○	○	○	○	○	○

The environmental protection period of each component is: PCB 10 years, power cord 10 years, battery 5 years. The environmental protection period marked by this product refers to the safe period of use for the product without any leaks of toxic and hazardous substances under the conditions specified in this user manual.

○ : It indicates that the toxic and hazardous substances in all homogeneous materials of this part are below the limit specified in SJ/T11363-2006.

× : It indicates that the toxic and hazardous substances in at least one homogeneous material of this part exceeds the limit specified in SJ/T11363-2006.

Remarks: The lead content in a small number of special-purpose SMT electronic components (such as high-voltage resistors, ceramic resistors, diodes, etc.) in the section labeled "×" in the above table may be $\geq 0.1\%$. The lead content in screws or cores of data cables can be $\geq 0.1\%$ due to the superior performance of the alloy. These components are in compliance with exemption clauses of the EU RoHS Directive. At this stage, due to the limitations in the global technological development level, there are no alternative technologies or components, and the lead content of the external contactable parts of the product meets environmental protection requirements.

Precautions and After-sales Service

Warranty Period

1. If the product suffers any performance defect listed on the Product Performance Defect List and such defect has been confirmed by after-sales service center within 7 days from the day of receiving, you are entitled to return or replace the product for free.
 2. If the product suffers any performance defects listed on the Product Performance Defect List, and the defect has been confirmed by the after-sales service center within 8-15 days from the day of receiving, the product will be replaced or repaired for free.
 3. If the product suffers any performance defects listed on the Product Performance Defect List, and the defect has been confirmed by the after-sales service center within 48 hours from the day of receiving, the product will be replaced or repaired for free.
- We recommend that you keep the protective external packaging box of the product for at least 30 days upon receiving the product.

Warranty Content

Item	Warranty Content	Warranty Period
Main unit	Main unit (including the built-in lithium battery)	1 year
Accessories	Type C USB cable	1 year
Consumables	Brush, filter, cleaning tools, dust bin, filter, water tanks	/

Note: Consumables delivered with the product have no warranty.

Exclusions and Limitations

1. The product is repaired without permission, wrongly used, crashed, neglected, misused, gotten wet, or damaged in an accident, modified, wrong accessories are used, or the anti-fraud label is torn off or altered.
2. Warranty period expires.
3. Damage is caused by force majeure.
4. Circumstances not listed in the Product Performance Defect List.
5. Defects of product and accessories caused by the owner or user.

Warranty Card

User Information

Name ----- Tel -----

Email ----- Zip Code -----

Address -----

Product Information

Model -----

Color -----

Main Unit SN -----

Service Record

Fault Symptom	Service Date	Service Decision	Service Technician signature

**CLEAN
·
SO
EXCEELENT**