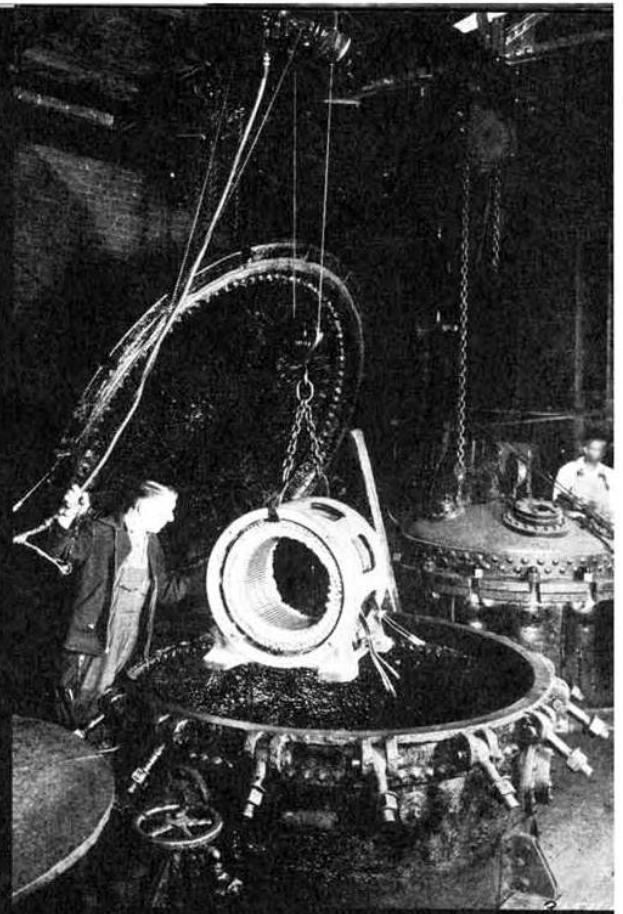
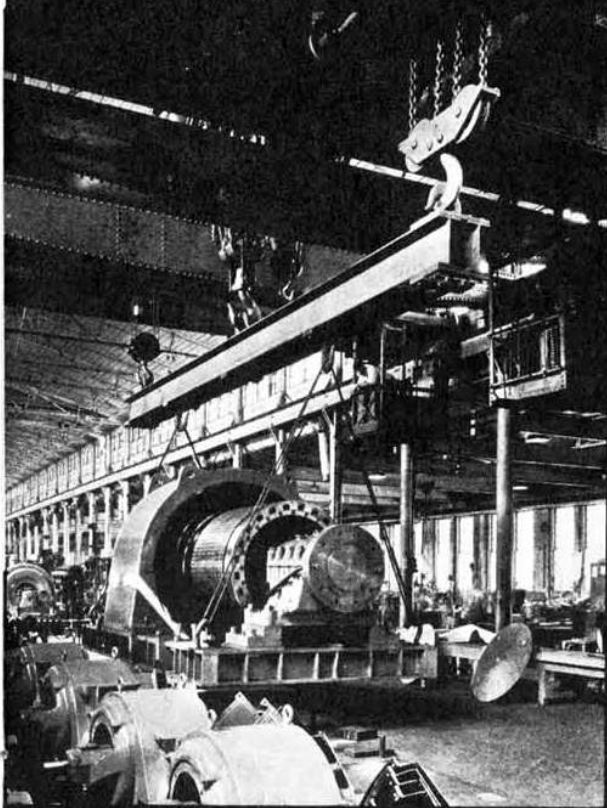


Here President Chas. E. Moore is shown with executives of the Crocker-Wheeler Electric Manufacturing Division. On his right is C. F. Poirier, Sales Manager, and on his left are A. J. M. Baker, General Manager and J. M. Mero, Controller.



An outstanding feature of present-day Crocker-Wheeler induction motor construction is the vacuum impregnation of the wound stator. This picture shows a stator, which has been carefully baked, about to be subjected under pressure to impregnation with the highest grade insulating varnish.



A recent view of the main building of the Crocker-Wheeler plant at Ampere. Traveling cranes are moving an 8000 hp motor to a railway car for shipment.



The Crocker-Wheeler plant as it looks today.