



Cinch Em™

Quick Connect Fitting

2",3",4" Hose to Hose Connection

Uses

Pumps-Wastewater-Fracking-Salt Water
Disposal-Chemical Plants-Poultry Plants
Paper Mills

Chemical Resistant - Quick Connects are made of a special blend of metal alloys to resist the wear and tear of the chemicals used in acidic-oriented applications.

Lighter Weight - One unit is 1/4th the weight of conventional connections which are made of steel and weigh approximately 20 lbs versus 5 lbs for each Quick Connect piece.

Pressure ratings up to 800 psi

For pricing, please contact us at (870) 863-0454
Bayou Pumps & Products, Inc.
denny@bayoupumps.com

**Replaces hammer
union connections
and cam locks**

Light Weight

**Pressure tested at
155 & 800 PSI**

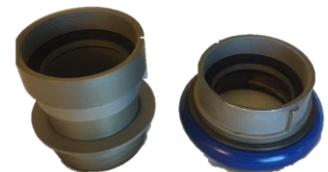
**Chemical
Resistant**

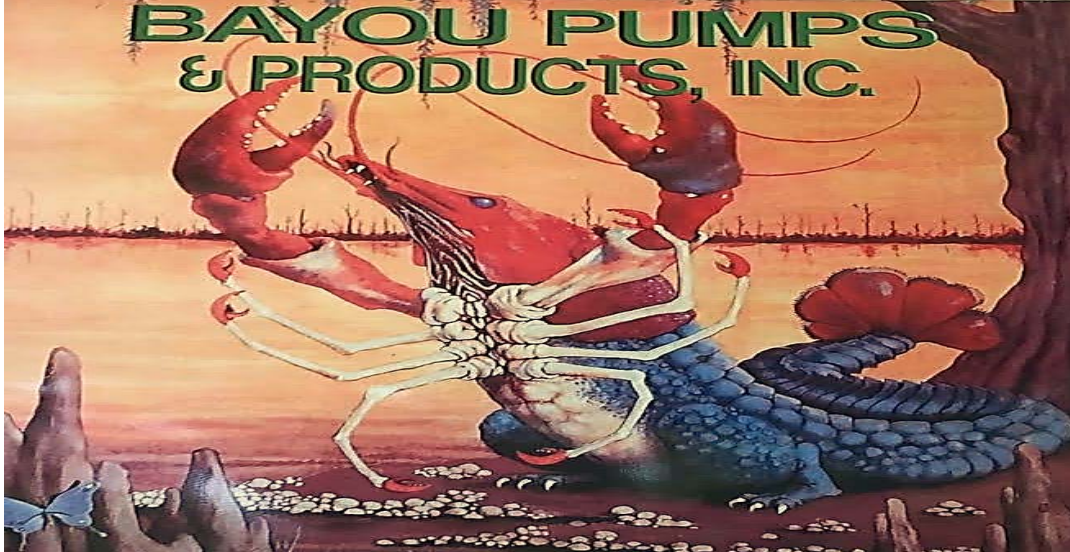
**Bayou
Pumps & Products**

171 Mims Drive
El Dorado, AR 71730

(870) 863-0454

denny@bayoupumps.com





Cinch Em™

Fitting Material Composition

- The grade/series of aluminum
 - A356.2-2(%): si: 7.04, fe: 0.102, ti: 0.15, zn: 0.01, cn: 0.003, mn: 0.39, rest: al
- Type of brass used for the retaining clips (grade/composition):
 - H62(%): fe: 0.15, pb: 0.08, sb: 0.005, bi: 0.002, p: 0.001, zn: 0.001, rest: brass
- Composition of the gaskets/seals: silica gel
 - Nitrile (NBR):

NBR can withstand a range of temperatures from -40 to 226 °F with minimal degradation over long periods of time. its physical and chemical properties vary depending on the polymer's composition of nitrile, this form of synthetic rubber is unusual in being generally resistant to oil, fuel, and other chemicals.

The more nitrile within the polymer (Durometer), the higher the resistance to oils but the lower the flexibility of the material-We're running 85 duro in the prototype seals and 80 duro in the final selas. Its pretty rigid as far as duro goes for longevity.
 - Hydrogenated Nitrile (HNBR):

HNBR to be used over a broad temperature range, -40 °F to 329°F, with minimal degradation over long periods of time as well.

For low-temperature performance, low ACN (acrylonitrile content) grades should be used; high-temperature performance can be obtained by using highly saturated HNBR grades with white fillers Applications requiring excellent resistance to fuels should consider using a nitrile with high acrylonitrile content.
- PSI rating (working/burst): WP:250PSI, BP: 750PSI
 - Blue sleeves: S-PVCSG-5
 - Anodization: resistance corrosion for 200hours, increasing 50UM on the surface after anodizing
- Chemicals used in our equipment
 - 3% Hydrofluoric
 - 28% Hydrochloric
 - Xylene Sands
 - 100
 - 40/70 White Sand
 - 20/40 Bauxite Sand



TESTING INFORMATION:

Sample Description: Sheet metal
 Testing method: Salt spray testing
 Testing standard: ASTM B117-11
 Testing conditions:
 Density of sediment saline : $(5 \pm 1)\%NaCl$ (m/m)
 Temperature of testing box : $(35 \pm 2)^\circ C$
 Sediment rate of salt spray: $(1.0-2.0)ml/(80cm^2 -h)$
 pH of sediment saline $(23 \pm 3^\circ C)$: 6.5-7.2 Exposure
 time: 336 hours

Testing result:

Appearance	Appearance grade
Sample appearance has no visible change	10

Note:

1. Appearance grade refers to EN ISO10289: 2001, judging by damaged proportion

Damaged proportion A(%)	Grade
0 (no damage)	10
$0 < A \leq 0.1$	9
$0.1 < A \leq 0.25$	8
$0.25 < A \leq 0.5$	7
$0.5 < A \leq 1.0$	6
$1.0 < A \leq 2.5$	5
$2.5 < A \leq 5.0$	4
$5.0 < A \leq 10$	3
$10 < A \leq 25$	2
$25 < A \leq 50$	1
$50 < A$	0

- 2. Sample edge and holes are not included
- 3. This result is responsible for delivered sample only

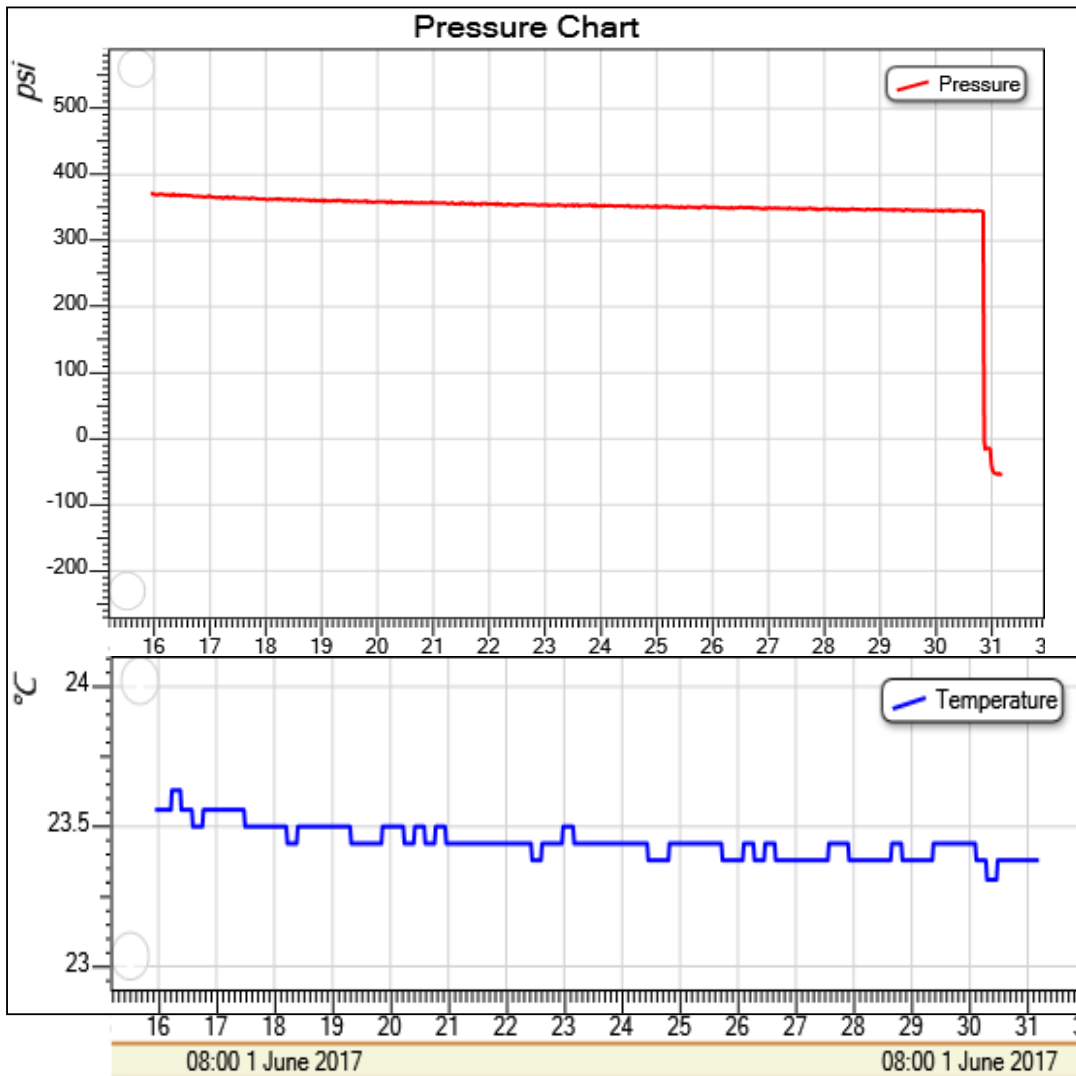
Data Collection Report

Gauge Information

Model	ADT680
SN	21814020032
Range	(0-36000)psi
Unit	psi

Record Information

Start Time	2017-06-01 08:15:55
End Time	2017-06-01 08:31:11
Interval	00:00:01
Number	831
MaxValue	372
MinValue	-54
AvgValue	347
RecordName	
RecordNumber	121



Notes: Temperature display is the compensation temperature

4" Coupler Quick Connect

Data Collection Report

Gauge Information

Model	ADT680
SN	21814020032
Range	(0-36000)psi
Unit	psi

Record Information

Start Time	2017-06-01 08:34:26
End Time	2017-06-01 08:49:53
Interval	00:00:01
Number	845
MaxValue	625
MinValue	-55
AvgValue	529
RecordName	
RecordNumber	122

