



Gwinnett

GWINNETT COUNTY
DEPARTMENT OF WATER RESOURCES

684 Winder Highway | Lawrenceville, GA 30045-5012

678.376.6700

www.gwinnettcountry.com | www.gwinnetth2o.com

NOTICE TO COMPLY

September 26, 2024

Hamiltons Crossing HOA
P.O. Box 1632
Buford, GA. 30515

Re: Hamiltons Crossing, Unit 1
Permit # FPL2000-00107

To Whom It May Concern:

This letter is to document an Inspection of your Water Quality Best Management Practices (BMP's) at the above referenced site by Gwinnett County Water Resources on 8/21/2024 and also to provide direction regarding the requirements of the County's Storm Water Development Regulations. At the time of the inspection, it was noted that deficiencies need to be corrected.

Your **Maintenance Agreement** contains instructions on how to maintain your BMP and also states:

"The Property Owner, its administrators, executors, successors, heirs or assigns shall maintain the facility in good working condition acceptable to the County and in accordance with the schedule of long term maintenance activities agreed hereto..."

In order to secure compliance with the Maintenance Agreement that you have with Gwinnett County, please contact us within 30 days of this letter to provide us with your plans to correct the deficiencies.

The inspection by DWR is a service the County provides to its customers but does not constitute a full detailed inspection. For example, the DWR BMP inspectors do not enter confined spaces or inspect a dam for structural integrity. BMP owners must incorporate Inspection and Maintenance activities that include regular, periodic inspections by the BMP Owner. See the Maintenance Agreement for more guidance.

All documents provided by Gwinnett County involving the inspection of the BMP should be provided to the contractor by the owner. Providing the contractor with these documents will speed up the maintenance process and help them to understand the necessary corrective actions. **Once all the deficiencies have been corrected, please submit pictures for all the corrected deficiencies. Please include tape measured pictures of the correct orifice sizes.**

It is Gwinnett County's desire to work with you and your business to resolve this matter. Please contact us once repairs have been made. **Be sure to reference the permit number located in the reference line when contacting our office**, so we may schedule a re-inspection at your location. Should you have any questions regarding this letter, please contact Jennifer Toler at 678-376-6982 or via email at jennifer.toler@gwinnettcountry.com.

Sincerely,

Jennifer Toler
Construction Manager

Enclosures

BMP Inspection Form

Type of Inspection: PERIODICFacilityID: 3839205BMP Identifier: POND A- EXTENDED DRY DETENTION

Type of Violation: ☒ Notice to Comply☐ Notice of ViolationBMP Score: 0

BMP Inspection Deficiencies

Code and Deficiency Description	D	Deficiency Notes
Clear/cut/remove all woody vegetative overgrowth and trees throughout pond, pond embankments, top of dam, along back face of dam, outfall area, and 10-ft on top of outfall pipe, to complete inspection.	Yes	
Remove accumulated sediment throughout pond.	Yes	
Repair erosion at OCS.	Yes	
Grout pipes and orifices at OCS.	Yes	
Backfill compacted earth on top of outlet pipe and backside of OCS structure.	Yes	
Replace outlet pipe with 48” reinforced concrete pipe (RCP) to ensure positive drainage through the outlet headwall.	Yes	
Replace rip rap at outfall.	Yes	
Ensure positive drainage through pond and outfall area.	Yes	
Provide photo with tape measure verifying end cap/orifice sizes.	Yes	Water Quality orifice (lower pipe) should be 18”.

****CAUTION****

The Outlet Control Structure (OCS) is considered a confined space. Please use caution when entering.
Once all the deficiencies have been corrected, please submit pictures for all the corrected deficiencies.
Please include tape measured pictures of the correct orifice sizes.

Comments: Please note additional work may be necessary. If you have any questions about this report, please contact James Burns at 678-376-7019 or DWRStormWaterBMP@GwinnettCounty.com.

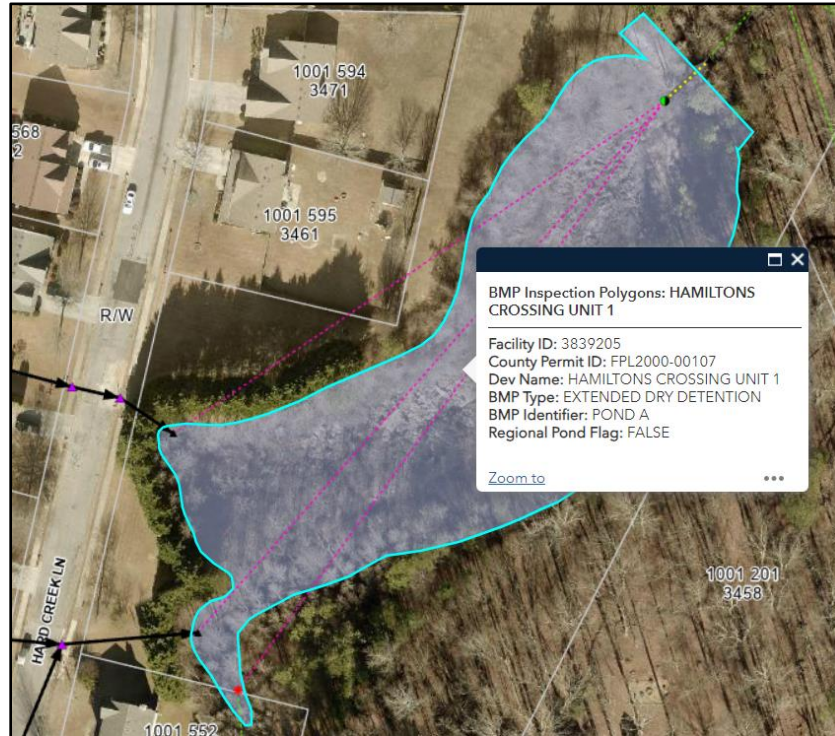
Customer Contact Information

Contact Person:Organization:Address:Hamiltons Crossing HOAP.O. Box 1632Buford, GA. 30515

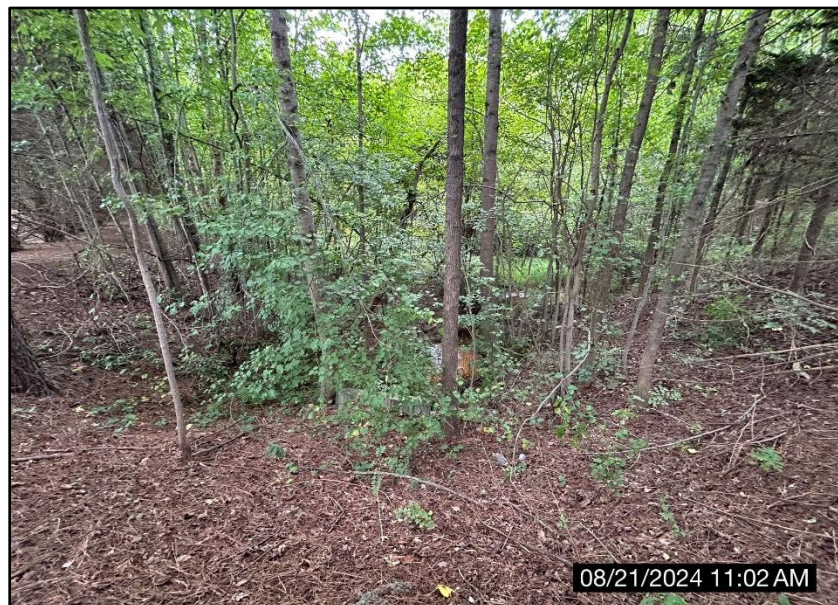
Phone (O):Phone (C):Phone (F):

FPL2000-00107 HAMILTONS CROSSING UNIT 1**Facility ID# 3839205**

Please submit pictures documenting all completed work.



Pond Location



Pond Overview

FPL2000-00107 HAMILTONS CROSSING UNIT 1**Facility ID# 3839205**

Please submit pictures documenting all completed work.



Clear/cut/remove all woody vegetative overgrowth and trees throughout pond, pond embankments, top of dam, along back face of dam, outfall area, and 10-ft on top of outfall pipe, to complete inspection. Remove accumulated sediment throughout pond.

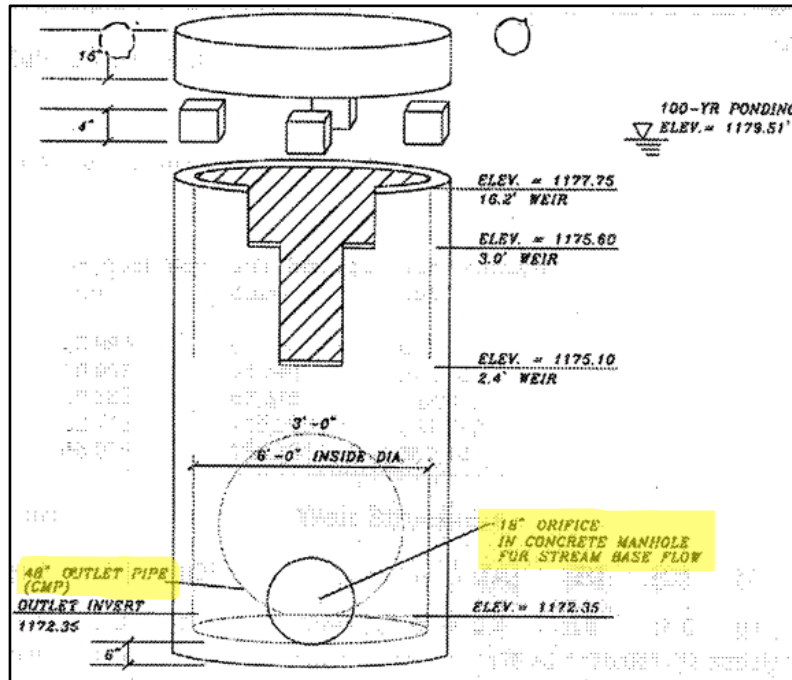


Repair erosion at OCS. Grout pipes and orifices at OCS. Backfill compacted earth on top of outlet pipe and backside of OCS structure.

FPL2000-00107 HAMILTONS CROSSING UNIT 1

Facility ID# 3839205

Please submit pictures documenting all completed work.



OCS Specs



Provide photo with tape measure verifying end cap/orifice sizes. Water Quality orifice (lower pipe) should be 18".

FPL2000-00107 HAMILTONS CROSSING UNIT 1

Facility ID# 3839205

Please submit pictures documenting all completed work.



Replace outlet pipe with 48" reinforced concrete pipe (RCP) to ensure positive drainage through the outlet headwall. Replace rip rap at outfall.



Ensure positive drainage through pond and outfall area.