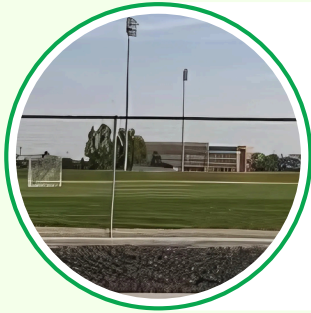


The background of the page is a photograph of an outdoor sports field, likely a soccer or football field, with a green grassy area and a black fence. In the distance, there are some trees and a building. The sky is a clear, light blue. A large, semi-transparent green shape is overlaid on the right side of the image, containing the main title text.

School Facilities & Transportation



High-Level Goals

- 1. Align future development with the capacity of public school facilities to the extent possible.**
- 2. Promote efficient and safe transportation options for students.**
- 3. Ensure new school facilities are integrated into the community effectively.**

Supportive Strategies

1. Align future development with the capacity of public school facilities to the extent possible.

- 1.1. Facilitate communication between the City, residents, developers, and the Middleton School District to monitor school capacity and transportation considerations associated with future development.
 - 1.1.1. Invite the school district staff to provide regular updates on school capacity at City Council.
 - 1.1.2. Promote cross recognition and cooperation of information to ensure educated decision making by both parties. This will ensure all participants are kept up to date with practices and decisions.
- 1.2. Encourage school district comments on development proposals, particularly regarding capacity and neighborhood improvements needed.
 - 1.2.1. Solicit school feedback on development proposals in a timely manner and pursuant to the timeline set forth in LLUPA.
 - 1.2.2. Regularly update the governing board and possibly the school district with information pertinent to management, growth, and level of service for school systems.
- 1.3. Incorporate school capacity considerations into the city’s development review process to ensure new developments do not overwhelm existing schools.
 - 1.3.1. Update development submittal checklists to request school district feedback on development proposals.
 - 1.3.2. Solicit information and guidance from the School District, within the confines of LLUPA, to address large developments’ impacts, ensuring adequate room is available.
- 1.4. Educate citizens on the Idaho school funding process and the available options for funding new school construction through regular School District updates to City Council.
 - 1.4.1. Invite the school district staff to provide regular updates on school funding options at City Council.

2. Promote efficient and safe transportation options for students.

2.1. Collaborate with school districts, the community and transportation authorities to improve safety and expand facilities by developing and maintaining safe routes to school, including pedestrian and bicycle path treatments and other transportation initiatives.

2.1.1. Work with the community to Identify projects and apply for Safe Routes to School grants to improve gaps in the network.



2.1.2. Work with the School District and Community to develop improved school drop-off and pick-up locations.



2.2. Support policies that encourage the inclusion of school transportation considerations in new development plans.

2.2.1. Update the development code standards to require bus stop consideration and school transportation network updates when adjacent to schools.

3. Ensure new school facilities are integrated into the community effectively.



3.1. Encourage the placement of new school facilities near parks and other community amenities to enhance their accessibility and integration into neighborhoods.

3.1.1. Provide feedback on School District plans for future facilities to encourage siting of schools near parks and other amenities.

3.1.2. Update the development code standards to allow for community amenities near school.

3.2. Promote the design of school facilities that support neighborhood compatibility and community cohesion.

3.2.1. Update development code standards for new schools to include perimeter fencing requirements and adequate pathway locations to promote walking to school from adjacent neighborhoods.

3.3. Ensure new schools have adequate infrastructure with adequate on-site queuing for drop-off and pick-up, reducing the impact on roadway traffic.

3.3.1. Require that roads and utilities be stubbed to future school sites as development occurs so the cost burden does not fall on the school district or the city when the time comes to open a new school.