



# Natural Resources





### High-Level Goals

1. Preserve and protect the community's abundant natural resources.
2. Ensure sustainable use and management of water resources.
3. Preserve land to maintain ecological balance and community character.
4. Foster community engagement and educational awareness about natural resource conservation.
5. Conserve ecologically significant areas and wildlife habitats.

### Supportive Strategies

#### 1. Preserve and protect the community's natural resources.

##### 1.1. Encourage landowners to participate in conservation programs

- 1.1.1. Help publicize the services of the Land Trust of the Treasure Valley to connect property owners interested in the conservation easement programs.

# LAND TRUST

*of the* TREASURE VALLEY

Source: Land Trust of the Treasure Valley

#### 2. Ensure sustainable use and management of water resources.

##### 2.1. Implement water conservation measures to reduce excessive consumption and to protect water quality in rivers, lakes, and watersheds.

- 2.1.1. Promote the use of drought-tolerant plants and xeriscaping techniques in landscaping for existing developments.
- 2.1.2. Partner with developers to promote the use of drought-tolerant plants and xeriscaping techniques in landscaping for new developments.



Example of xeriscaping  
Source: Boise State Public Radio

**2.2. Promote best practices to prevent pollution and contamination of water bodies and groundwater aquifers from agricultural and residential sources.**

- 2.2.1. Partner with the USDA to perform educational seminars on proper fertilization practices.
- 2.2.2. Disseminate regular literature to Middleton households on ways to prevent run-off pollution from fertilizers through mailers and/or utility bill announcements.



**2.3. Promote the use of green infrastructure, such as rain gardens and permeable pavements, to manage stormwater and reduce runoff.**

- 2.3.1. Identify and prioritize opportunities to install green infrastructure in existing public rights-of-way such as areas that regularly flood, including low-lying areas and areas nearby waterways.



**2.4. Educate the community about water conservation practices and the importance of protecting water resources.**

- 2.4.1. Utilize regular announcements in utility bills to highlight key water conservation tips, the benefits of protecting water resources, and practical steps residents can take.

**3. Preserve land to maintain ecological balance and community character.**

- 3.1. Designate open spaces and green connectors in land use planning to help maintain the rural character and ecological balance of the community.

- 3.1.1. Continue to develop a network of parks, greenways, and wildlife corridors to connect different parts of the city and integrate natural features into the urban fabric.



#### 4. Foster community engagement in natural resource conservation.

- 4.1. Organize community events, such as clean-up days and tree-planting activities, to promote local involvement in conservation efforts.

- 4.1.1. Organize clean-up days where residents come together to clean parks, streets, or waterways. Provide necessary supplies, such as gloves and trash bags, and coordinate with waste management services for disposal.



- 4.1.2. Support community garden projects where residents can contribute to creating and maintaining public garden spaces. Host planting days, gardening workshops, and harvest festivals to engage the community and promote local food production.





- 4.2. Encourage volunteer programs that allow community members to participate in conservation projects and monitor local natural resources.
  - 4.2.1. Promote existing volunteer programs through local media, social media, community newsletters, and public events. Highlight the impact of volunteering, provide success stories, and include clear instructions on how to get involved.
- 4.3. Host or facilitate community conservation activities for school-aged children, bolstering their current curriculum.
  - 4.3.1. Work with the Middleton School District to align conservation activities with existing science and environmental curricula. Educators can help design activities that complement what students are learning in the classroom, making the experience more relevant and impactful.
- 4.4. Develop partnerships with local businesses, organizations, and governments to support and enhance community conservation efforts.
  - 4.4.1. Partner with local businesses, environmental organizations, and government agencies to co-sponsor conservation events such as clean-up days, tree-planting activities, or recycling drives.
  - 4.4.2. Encourage businesses to contribute in-kind resources such as materials, equipment, or volunteer time. For instance, a landscaping company might provide trees and planting supplies, or a printing business might donate flyers and promotional materials for conservation events.

## 5. Conserve ecologically significant areas and wildlife habitats.

- 5.1. Create interpretative signage and information to educate residents about wildlife, including endangered wildlife, or habitat areas.
  - 5.1.1. Work with Idaho Fish and Game and other partners to prepare an interpretive, educational signage plan for educating residents on wildlife, endangered or otherwise, and habitat areas.
  - 5.1.2. Outline critical locations for signage placement, including along nature trails, along the Boise River, and in park and recreation areas.
  - 5.1.3. Identify opportunities and secure funding for signage implementation.



# Particular Areas or Sites

Historic community bank in downtown Middleton



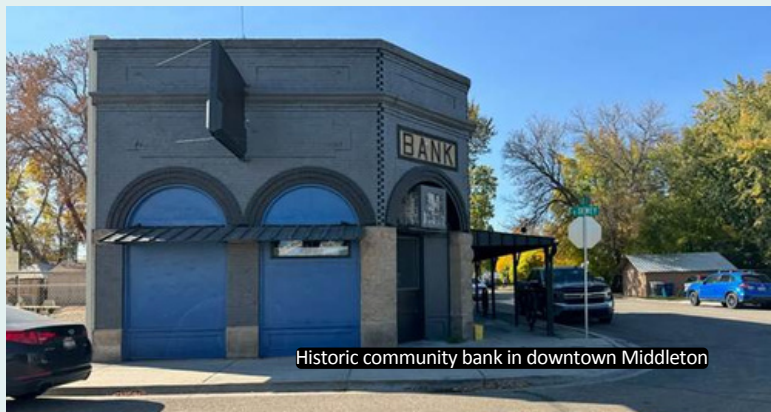
### High-Level Goals

1. Preserve and protect areas of historical and architectural significance.
2. Create working solutions to protect areas of archaeological or historical significance.
3. Promote development that conserves ecologically significant areas and wildlife habitats
4. Enhance and protect scenic areas and landscapes.
5. Promote community involvement in the preservation of significant sites and Historical Society of Middleton

### Supportive Strategies

#### 1. Preserve and protect areas of historical and architectural significance

- 1.1. Engage the Canyon County Historic Preservation Commission (HPC) and Historical Society of Middleton to oversee and advocate for protecting significant or designated historical and architectural sites.
  - 1.1.1. Facilitate meetings with HPC to discuss ongoing and opportunities for new partnerships for the preservation of critical structures.
- 1.2. Encourage state and regional agencies and the Historical Society of Middleton to provide financial incentives, such as grants or tax credits, to property owners for the restoration and maintenance of historic structures.
  - 1.2.1. Engage with the Canyon County HPC and Idaho SHPO to conduct research to identify potential funding resources or incentives for historic property rehabilitation.



Historic community bank in downtown Middleton

#### 2. Identify and protect areas of archaeological significance.

- 2.1. Collaborate with state and local archaeological organizations to ensure proper excavation, documentation, and preservation of artifacts.
  - 2.1.1. Conduct an assessment to identify sites of archaeological significance when required by external funding requirements.



### 3. Enhance and protect scenic areas and landscapes.

- 2.2. Establish procedures for providing information to the state agency responsible for recording and protecting discovered archaeological sites during construction and development activities.
  - 2.2.1. When required by necessity, conform to state or federal reporting requirements.
  - 2.2.2. Create an inadvertent discovery plan to ensure compliance with state and federal guidelines.
- 3.1. Promote the preservation of open spaces and natural landscapes that contribute to the community's scenic beauty.
  - 3.1.1. Working from publicly available data, identify sensitive areas or land of outstanding natural beauty.
  - 3.1.2. Prepare strategies for preservation of each area that do not impact existing property rights.
  - 3.1.3. Detail out a public use or purpose for each area, outlining the civic impact.
- 3.2. Encourage community events to clean and maintain scenic areas, fostering a sense of pride and stewardship among residents.
  - 3.2.1. Support a community-wide clean up day for spring clean-ups, in partnership with organizations like the Middleton School District and Middleton Chamber of Commerce.
  - 3.2.2. Facilitate a community recycling day where dumpsters, shredding, and other services are provided free of charge.



Example of community recycling day | Source: Town of Manchester, CT



#### 4. Promote community involvement in the preservation of significant sites.

- 4.1. Encourage volunteer programs and community groups dedicated to the preservation and maintenance of historical, archaeological, and ecological sites.
  - 4.1.1. Create and develop a volunteer program where local residents who are concerned about the community can volunteer and host events to also involve their neighbors on issues they care about.
- 4.2. Promote educational programs and materials to inform residents about the significance of local sites and how they can contribute to their protection.
  - 4.2.1. Partner with the Middleton School District to identify integration opportunities, facilitating on the ground educational programs.
  - 4.2.2. Partner with the Middleton Historical society to obtain information and materials for the educational programs.
- 4.3. Develop partnerships with schools, local businesses, and organizations to support preservation efforts through funding, resources, and volunteerism.
  - 4.3.1. Utilize local curriculum to highlight the need for student participation in community clean-ups.
  - 4.3.2. Define partnerships for volunteerism with the City, Middleton School District, Middleton Chamber of Commerce, and other regional organizations.

