



Steel Tiger Pinball – Instructions

Standard Size Apron Stadium Lighting Kit

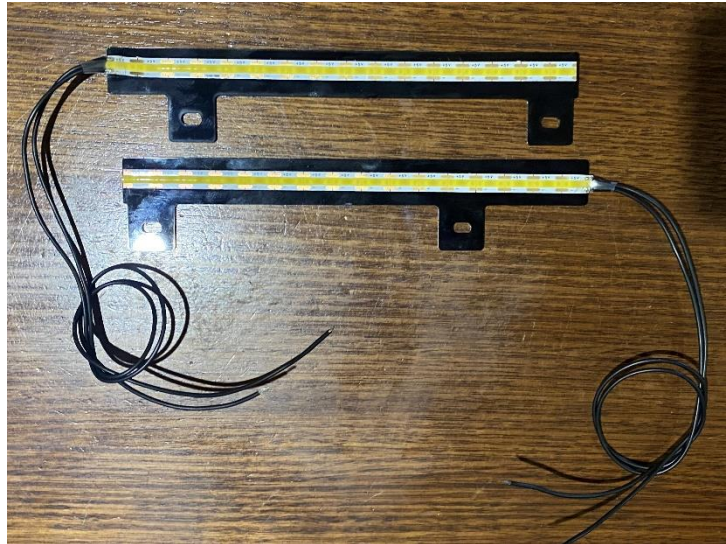
Thank you for purchasing our **Standard Size Apron Stadium Lighting Kit** for your **WMS/BALLY Pinball Machine!** This mod drastically improves the lighting in the lower half of your machine in just a few quick steps. There is minor soldering required for installation.

You will Need:

- Wire Stripper
- Wire Cutter
- Phillips Head Screwdriver
- Soldering Iron
- Solder
- **Additional Length of Wire (VARIES BY GAME)**

1. There are two sides to the light arrays, one for the left and for the right. Please ensure you have both sides as the screw holes are not symmetrical and corresponding sides must be used.

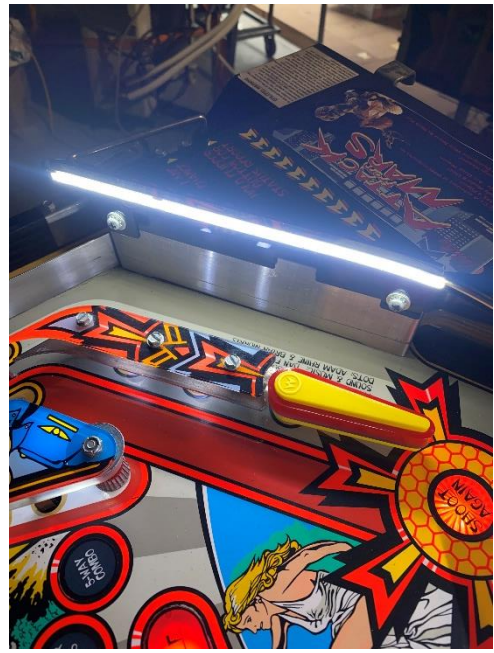
Please start by **turning your machine OFF**



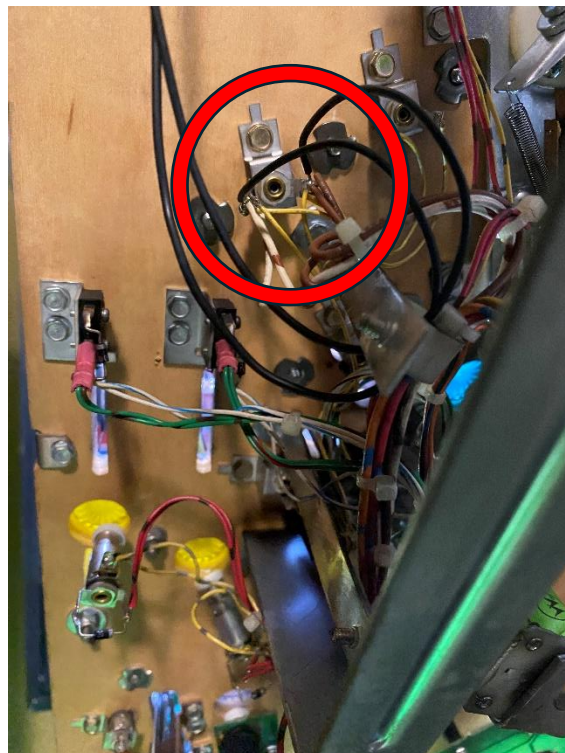
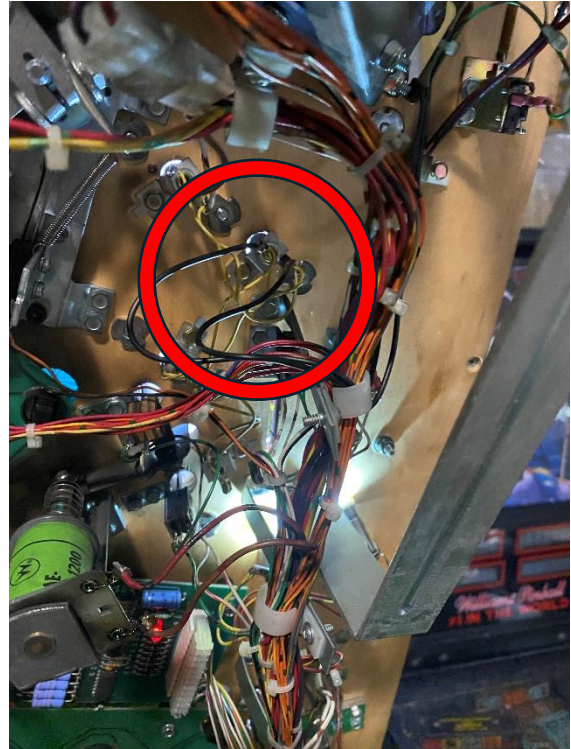
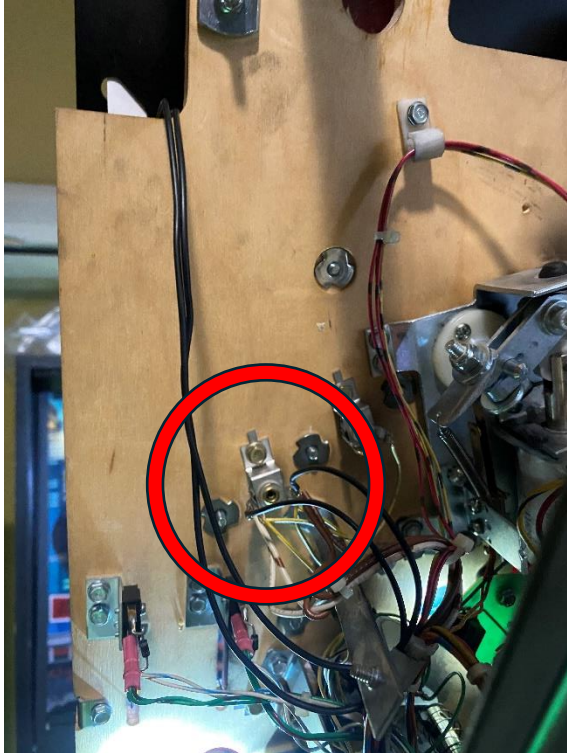
Using your **Phillips Head Screwdriver**, carefully unscrew and remove the chrome metal trim attached to the apron. There are **4 screws and washers** which must be removed. Place this hardware to the side as it will be reinstalled shortly.

2. The Apron Lighting arrays are mounted in front of the chrome trim. Thus, remove the screws from the trim removed in step one and feed the screw through the holes of the Apron Lighting Plastic. There is enough room behind the array to allow for the chrome trim to mount behind and screw back into the apron.
3. Re-attach the chrome trim to the Apron by its original mounting screws, feeding the wires down under the playfield. On our sample WPC-95 machine (Attack From Mars) it was easiest to feed the right side under the apron and between the ball trough. The left side through the back end of the playfield itself.





4. The wires then need to be connected to the **General Illumination (GI)** Circuit of the Playfield; often indicated by Yellow banded or solid wiring.
 - a. Generally there is GI near the ball return lanes, or near the slingshots.



- b. Any GI lamp under the playfield can be used to power the apron lights however **we prefer to use the inlane or slingshot lights.**
 - c. Soldering the wires can take time, ensure that your iron tip is clean and there is significant solder on both the end of the wire and the lamp socket you are soldering onto.
 - d. Every machine design is different and thus it may be required that additional wire be attached to the pre-existing wire to reach the lamp socket.
5. The lighting Kit is installed, turn on your machine and the two arrays should turn on along with the GI lighting and will react as the game turn them on and off.

