

Field Search Features

Browser History Search

Field Search quickly and automatically retrieves Internet histories from the following popular browsers:



Sample Browser History. Click image to view larger version.

- Internet Explorer history and cookies.
- Netscape history and cookies.
- Firefox history and cookies.
- Opera history and cookies.

Results are displayed in an easy-to-read format that includes the date and time each website was visited. Results can be sorted in a number of ways to help the officer understand an offender's surfing patterns.

Items are selected for inclusion in the report by a single mouse click. Items also can be seized to removable media easily. Officers also can choose to search free space for orphaned (deleted) history records.

Image Search

Field Search quickly finds all logical images of the following formats, even if images are zipped:



Sample Image Gallery. Click image to view larger version.

- JPG.
- BMP.
- PNG.
- GIF.

Images are displayed in a gallery view.

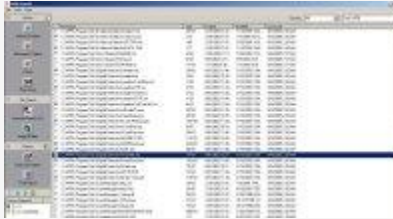
Items are selected for inclusion in the report by a single mouse click. Images also can be easily seized to removable media.

Full path Created, Accessed, Modified (CAM) dates and image sizes are retrieved for an image by a single mouse click.

Field Search contains an internal viewer that allows any image in the gallery to be viewed full size by double-clicking on the image.

Text Search

Field Search allows officers to search for text (words and phrases) in any logical file. The text search will even open zipped files if they are not password protected.



Sample Text Search Screen. Click image to view larger version.

Files with any hits are displayed with associated date/time stamps. Hit lists may be filtered and sorted in a number of ways to enhance the analysis.

Items can be selected for inclusion in the report by a single mouse click. Items also can be easily seized to removable media.

Multiple strings can be simultaneously searched. Searches can be limited to only certain file types to expedite the search.

The flexible input format allows for searches of header and footer date to identify unique file types.

Reports

Field Search has a built-in report function. Once items are selected for inclusion, the report is automatically created. Each item's associated path and date/time stamp are included in the report.



Sample Report. Click image to view larger version.

The report can be printed or exported to removable media as either an RTF file or a PDF file.

System information is automatically added to the report. Additional space is provided for the officer to add identifying information and comments.

Export Data

Field Search can export data to spreadsheets for further analysis. All records are exported regardless of whether the record was selected for inclusion in the report.

The officer can choose to export any of the following data:

- Internet Explorer history and cookies.
- Netscape history and cookies.
- Firefox history and cookies.
- Opera history and cookies.
- Test search hits.
- Raw scans of orphaned URL histories.

All date/time stamps associated with the history records and text search hits are exported along with the data for each item.

Data exported to spreadsheets can be used to produce more complex and thorough analysis of the offender's computer use.

All data is exported in standard Microsoft® Excel format and is easily imported into almost any spreadsheet or database package.