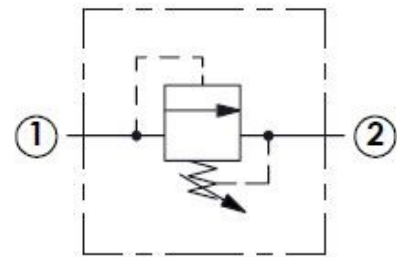


Description

Direct-acting relief valve with timed delay on pressure rise
Opens with cushioning at relief setting with little or no overshoot

Features

Provides gentle starting and stopping of high inertial loads
Can also be used for soft braking and starting of rotary applications
Allows use of full system pressure without overshoot pressure



Specifications

Maximum Operating Pressure: 5000 psi
Nominal Flow Capacity: 65 gpm
Operating Temperature: -40 °F to 250 °F
Fluids: Mineral-based or synthetic hydraulic fluids

