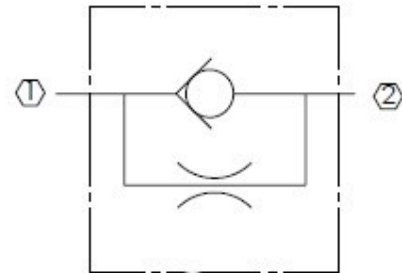


Description

Insertable hydraulic check valve with orifice

Features

- All steel construction
- Springless shuttle-type check disc
- Small, compact design
- Ideal for installation in hydraulic manifolds
- Customer-specified orifice sizes up to .078 inches



Specifications

- Maximum Operating Pressure: 3000 psi
- Nominal Flow Capacity: 3 gpm free-flow
- Operating Temperature: -40 °F to 250 °F
- Fluids: Mineral-based or synthetic hydraulic fluids
- Installation Torque: 8-10 ft-lbs

