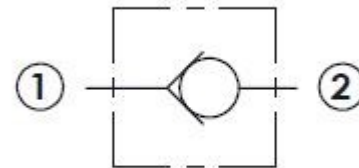


## Description

Perfect for use in cross over manifolds  
Zinc plated alloy steel parts

## Features

High performance design  
Contamination resistant  
Parts-in-Body design allows higher flows and lower pressure drop



## Specifications

Maximum Operating Pressure: 4500 psi  
Nominal Flow Capacity: 30 gpm  
Operating Temperature:  $-40^{\circ}\text{F}$  to  $210^{\circ}\text{F}$   
Fluids: Mineral-based hydraulic fluids  
Crack Pressure: 3 psi  
Cavity: BC-U12-2C  
Installation Torque: 45-50 ft-lbs

