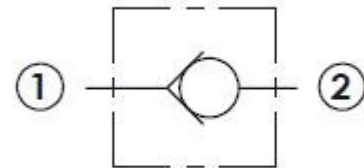


Description

Extreme performance for circuit protection and back pressure
Zinc plated alloy steel parts

Features

Parts-in-body design allows extreme flows and lower pressure drop
Contamination resistant



Specifications

Maximum Operating Pressure: 3500 psi
Nominal Flow Capacity: 80 gpm
Operating Temperature: -40 °F to 210 °F
Fluids: Mineral-based hydraulic fluids
Crack Pressure: 30, 45, 60 psi others available
Cavity: ISO 7789 42-01-0-98 (ISO M42-2.0)
Installation Torque: 110-120 ft-lbs

