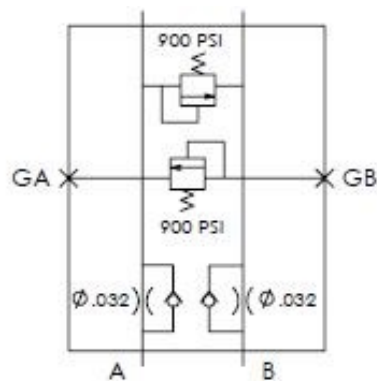


## Description

Cross-over manifold for motor direct mount  
Mounts to Danfoss Exel LSHT motors  
Allows limiting speed with internal relief valves

## Features

Aluminum manifold with parts-in-body valves engineered by Bridon  
900 and 2000 psi available  
Integral flow control will limit motor speed



## Specifications

Maximum Operating Pressure: 2000 psi  
Nominal Flow Capacity: 3 gpm  
Operating Temperature: -40 °F to 210 °F  
Fluids: Mineral-based or synthetic hydraulic fluids