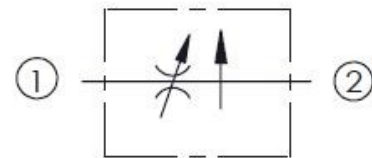


Description

Pressure-compensated flow control
 Higher flow adjustment range
 Less susceptible to fluctuation due to temperature

Features

Pressure-compensated
 Adjustment range: 50% from specified flow



Specifications

Maximum Operating Pressure: 3500 psi
 Nominal Flow Capacity: 3.5 gpm
 Operating Temperature: -40 °F to 210 °F
 Fluids: Mineral-based or synthetic hydraulic fluids
 Cavity: Common cavity C08-2
 Installation torque: 20 ft-lbs

