

Description

Screw in cartridge check valve/back pressure valve

Can be used for:

Check flow/pressure, create back pressure

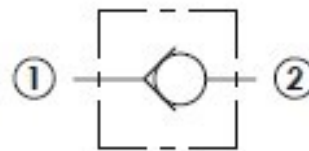
Used as a low pressure bypass

Features

Opening pressures: 3, 25, 30, 45, 60, 100 psi

Zinc plated steel and poppet materials

Guided poppet design



Specifications

Maximum Operating Pressure: 3500 psi

Nominal Flow Capacity: 80 gpm

Operating Temperature: -40 °F to 210 °F

Fluids: Mineral-based hydraulic fluids

Crack Pressure: 30, 45, 60, 100 psi others available

Cavity: ISO 7789 42-01-0-98 (ISO M42-2.0)

Installation Torque: 110-120 ft-lbs

