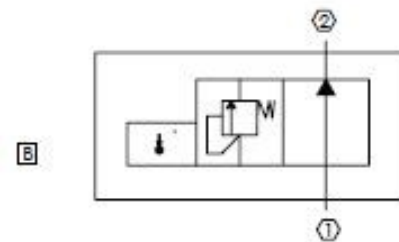


Description

Normally open poppet type, thermally closed with relief function
Stays open until the desired temperature then closes

Features

Optional pressure settings: 30 psi, 60 psi, others available
Optional shift temperature settings: 90 °F, 120 °F, 150 °F, others available
Monitors oil temperature to maintain operation



Specifications

Maximum Operating Pressure: 500 psi
Nominal Flow Capacity: 80 gpm
Operating Temperature: -40 °F to 210 °F
Fluids: Mineral-based hydraulic fluids
Cavity: VC 42-M2

