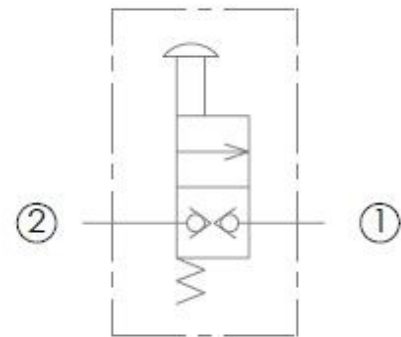


Description

Manual release valve
Stainless steel button and zinc plated steel components
Normally closed
Blocks port 2 to 1 until button is pressed

Features

Nominal force to open valve
No load: 5 lbs
1000 psi at port 2: 7 lbs
2000 psi at port 2: 9 lbs
3000 psi at port 2: 11 lbs



Specifications

Maximum Operating Pressure: 3500 psi
Nominal Flow Capacity: 4 gpm
Operating Temperature: -40 °F to 210 °F
Leakage: 5 drops/min
Cavity: Hydraforce VC06-2 Variation 'A'

