

Description

Pressure-balanced 3-way low leakage ¼-turn ball valve

Pressure -balanced ball seats enables the valve to be actuated under pressure

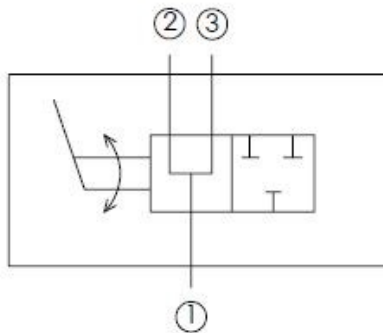
Features

Ideal for controlling loaded systems such as a cylinder locking valve

Plated alloy and stainless steel and anodized aluminum construction

Handle included (unassembled for bulkhead installation)

Other handle options available



Specifications

Maximum Operating Pressure: 3000 psi

Nominal Flow Capacity: 6 gpm

Operating Temperature: -40 °F to 210 °F

Fluids: Mineral-based hydraulic fluids

Seals: Specialized polymer seats and seals with nitrile and engineered O-rings and PTFE backups

