

### Description

Springless In-line check valve fitting

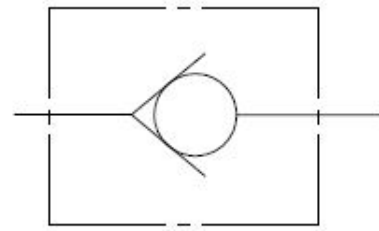
JIC -12 female 37° flare to JIC -12 male 37° flare

Different orifice sizes available

### Features

Steel body and guided poppet

Great for protecting the low port side of a motor from reverse pressure



### Specifications

Maximum Operating Pressure: 3500 psi

Nominal Flow Capacity: 20 gpm

Operating Temperature: -40 °F to 210 °F

Fluids: Mineral-based hydraulic fluids

