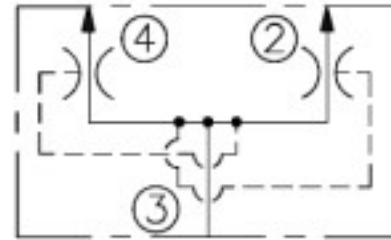


### Description

Flow divider 50:50 split  
Anodized aluminum body  
Steel valve with hardened spools  
Quiet response

### Features

Has dividing and combining modes  
Great for dividing different loaded cylinders and jacks  
Keeps the flow split the same at different loads  
Flow accuracy to 15%



### Specifications

Maximum Operating Pressure: 3500 psi  
Noninal Flow Capacity: 1-5 gpm  
Operating Temperature: -40 °F to 210 °F