

Description

In-line hydraulic check valve

JIC-6 SAE-6 O-ring boss

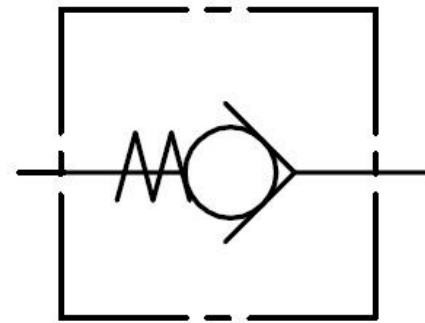
Different orifice sizes and pressure ranges available

Features

Steel body and guided poppet

Spring options for various crack pressures

Integral valve installed in a ready-to-mount body



Specifications

Maximum Operating Pressure: 3000 psi

Nominal Flow Capacity: 6 gpm

Operating Temperature: -40 °F to 210 °F

Fluids: Mineral-based hydraulic fluids

Crack Pressure: 5 ml per minute

