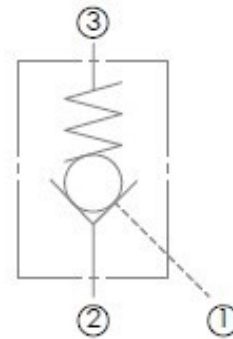


Description

Pilot operated check cartridge valve
Low leakage piston design
Pilot ratio is 7:1

Features

Hardened steel poppet and cage for long life
Low leakage piston design
Industry common cavity



Specifications

Maximum Operating Pressure: 3500 psi
Nominal Flow Capacity: 6 gpm
Operating Temperature: -40 °F to 210 °F
Fluids: Mineral-based hydraulic fluids
Crack Pressure: 47 psi
Cavity: C10-3
Installation Torque: 30-35 ft-lbs

