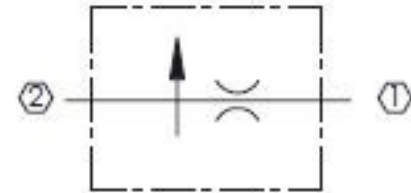


Description

Pressure-compensated flow regulator
SAE-8 O-ring boss to JIC-8

Features

Zinc-plated body and steel spool for long life
Fast-acting response time
Various flow setting options



Specifications

Maximum Operating Pressure: 3000 psi
Fixed Flow Settings: Fixed customer-specified flow
Operating Temperature: -40 °F to 210 °F

