

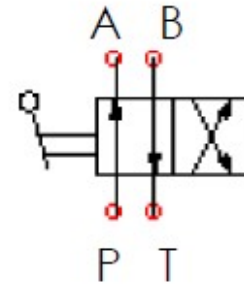
Description

Single Acting Conversion Selector SACS 4-way low leakage ¼-turn ball valve

Pressure -balanced ball seats enables the valve to be actuated under pressure

Features

- Ideal for controlling two systems with 1 single acting power unit
- Plated alloy and stainless steel and anodized aluminum construction
- Other handle options available



Specifications

- Maximum Operating Pressure: 3000 psi
- Nominal Flow Capacity: 6 gpm
- Operating Temperature: -40 °F to 210 °F
- Fluids: Mineral-based hydraulic fluids
- Seals: Specialized polymer seats and seals with nitrile and engineered O-rings and PTFE backups

