

Description

Pressure-balanced 6-way low leakage ¼-turn ball valve

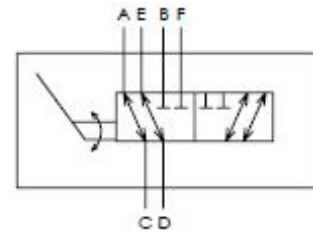
Pressure -balanced ball seats enables the valve to be actuated under pressure

Features

Ideal for controlling two systems with 1 power unit

Plated alloy and stainless steel and anodized aluminum construction

Other handle options available



Specifications

Maximum Operating Pressure: 3000 psi

Nominal Flow Capacity: 6 gpm

Operating Temperature: -40 °F to 210 °F

Fluids: Mineral-based hydraulic fluids

Seals: Specialized polymer seats and seals with nitrile and engineered O-rings and PTFE backups

