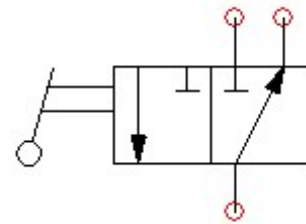


Description

Single Acting Selector SAS 3-way low leakage ¼-turn selector valve
 Pressure -balanced ball seats enables the valve to be actuated under pressure

Features

Ideal for controlling two systems with 1 power unit
 Plated alloy and stainless steel and anodized aluminum construction
 Other handle options available



Specifications

Maximum Operating Pressure: 3000 psi
 Nominal Flow Capacity: 6 gpm
 Operating Temperature: -40 °F to 210 °F
 Fluids: Mineral-based hydraulic fluids
 Seals: Specialized polymer seats and seals with nitrile and engineered O-rings and PTFE backups

