

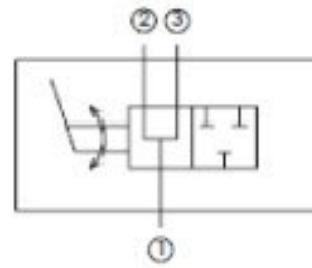
**Description**

3-way on/off

Pressure -balanced ball seats enables the valve to be actuated under pressure

**Features**

- Ideal fdeal for controlling loaded systems such as a cylinder locking
- Plated alloy and stainless steel and anodized aluminum construction
- Other handle options available



**Specifications**

- Maximum Operating Pressure: 3000 psi
- Nominal Flow Capacity: 6 gpm
- Operating Temperature: -40 °F to 210 °F
- Fluids: Mineral-based hydraulic fluids
- Seals: Specialized polymer seats and seals with nitrile and engineered O-rings and PTFE backups

