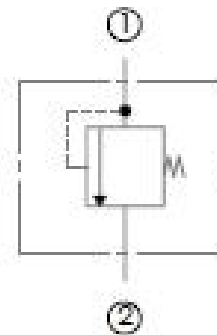


Description

Direct-acting poppet-style relief valve
Dampened poppet ensures smooth operation
Adjustable pressure setting

Features

Steel body and guided poppet
Smooth and quiet operation
Fast-acting response time
Various spring options
Can only be adjusted when pressure is removed



Specifications

Maximum Operating Pressure: 4500 psi
Nominal Flow Capacity: 30 gpm
Operating Temperature: -40 °F to 210 °F
Fluids: Mineral-based hydraulic fluids
Cavity: T-13A
Installation Torque: 30-35 ft-lbs

