

Description

In-line hydraulic check valve with orifice

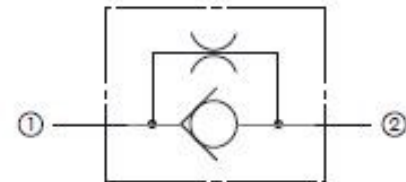
Straight threadconnector

SAE -6 female O-ring boss to SAE -6 male O-ring boss

Features

Steel body and poppet

Anti-clogging annular orifice



Specifications

Maximum Operating Pressure: 3000 psi

Nominal Flow Capacity: 6 gpm

Operating Temperature: -40 °F to 210 °F

Fluids: Mineral-based hydraulic fluids

Crack Pressure: 8 psi

