



## Bridon® Industries Rotary Attachment System Applications



1

### Direct Acting Relief Valves

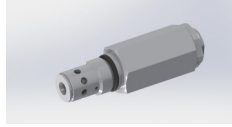
Fast-acting, and contamination resistant, direct acting relief valves work well at the source

06-250-417 T13 A cavity

06-250-427 T13 A cavity

06-250-347 C10-2 cavity

Assorted inline fittings



2

### Shockless Relief Valves

High flow relief valve that dampens pressure rise rate so the system can take full advantage of the pressure setting without overshoot.

06-204-XXXX M30 cavity

06-200-XXXX M30 cavity

C10-2 size valve coming soon



3

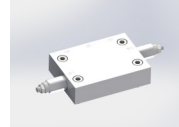
### Reverse Flow Checks

System bypass valve can be used for filters or coolers to avoid high start up pressure due to cold temperatures. Valves stays open until system reaches desired temperature than acts as a full flow relief.

06-250-379 -10 FJIC to -10 MJIC

06-250-260 -12 FJIC to -12 MJIC

06-250-285 -16 FJIC to -16 MJIC



4

### Cross-over Relief Manifolds

Using any of Bridon's superior relief valves a direct crossover relief valve manifold relieves pressure at the source with a direct acting, fast opening and contamination resistant valve.

Can have added ports or direct mounted via a manifold mount

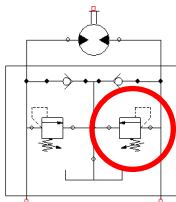


5

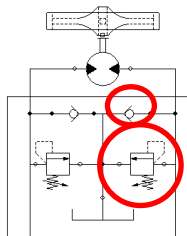
### Cross-Over with Anti-Cavitation Manifolds

These manifolds add an anti-cavitation galley that can be ported to the reservoir or a charge pressure line to ensure that the low side does not starve from component leakage.

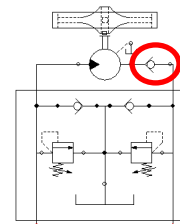
Can have added ports or direct mounted via a manifold mount



Cross Over Relief Manifolds  
1, 2, 4, 5



Spin-down Braking Swing  
Relief Manifolds  
2, 4, 5



Open Loop Motor Controls  
3

## Complete System Pressure Protection Solutions

One stop provider for all your hydraulic system needs

Advanced engineering for the performance and durability your customers need

Competitive pricing and delivery to meet your tight schedules