

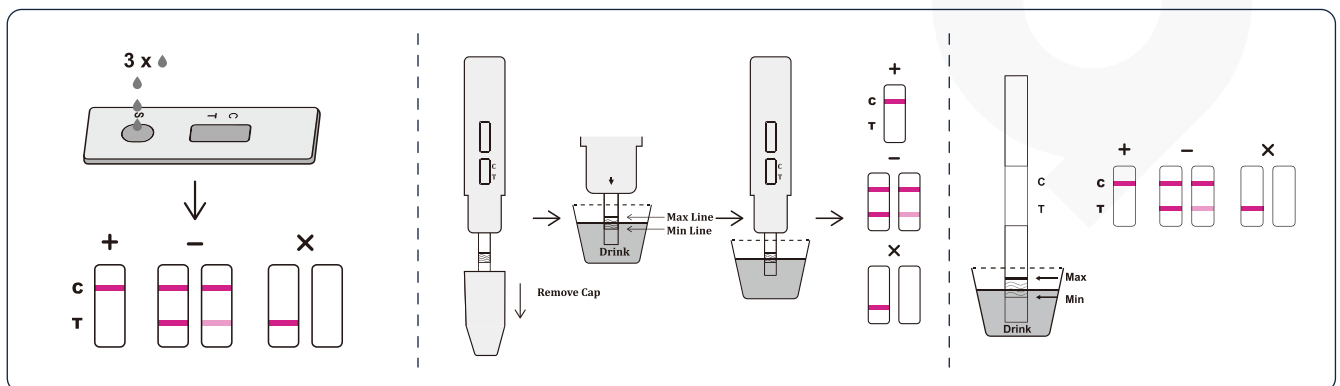
Professional Use Rapid Test Single-Drug or Multi-Drug Drink Check Test



▲ Why Choose Us ?

- ✓ Easy and Convenient to Use
- ✓ Fast Results in 5-10 Minutes
- ✓ Clear Visual Interpretation
- ✓ No Cross-reactivity with Multi Drink Compounds

The DOA Drink Check Test is a specialized device aimed at detecting the presence of date rape drugs in beverages. Designed for personal safety, this test offers a discreet and effective way to ensure that drinks have not been spiked with substances like Rohypnol, GHB, or Ketamine. The test is easy to use and provides immediate results, often through a color change or a chemical reaction. Ideal for individuals in social settings where drink tampering is a concern, the DOA Drink Check Test empowers users to take proactive steps to protect themselves. It serves as an important tool in the fight against drug-facilitated sexual assault, promoting safety and awareness.



Cat No.	Product Description	Specimen	Format	Kit Size	Cut-Off
D02-BAR	Single-Drug Drink Check Test - Barbiturates (BAR)	Drink	Device	10 T	600 ng/mL
D01-BAR	Single-Drug Drink Check Test - Barbiturates (BAR)	Drink	Strip	10 T	
D04-BAR	Single-Drug Drink Check Test - Barbiturates (BAR)	Drink	Dip card	10 T	
D02-BZO	Single-Drug Drink Check Test - Benzodiazepines (BZO)	Drink	Device	10 T	600 ng/mL
D01-BZO	Single-Drug Drink Check Test - Benzodiazepines (BZO)	Drink	Strip	10 T	
D04-BZO	Single-Drug Drink Check Test - Benzodiazepines (BZO)	Drink	Dip card	10 T	
D02-FLZ	Single-Drug Drink Check Test - Flunitrazepam (FLZ)	Drink	Device	10 T	500 ng/mL
D01-FLZ	Single-Drug Drink Check Test - Flunitrazepam (FLZ)	Drink	Strip	10 T	
D04-FLZ	Single-Drug Drink Check Test - Flunitrazepam (FLZ)	Drink	Dip card	10 T	
D02-FYL	Single-Drug Drink Check Test - Fentanyl (FYL)	Drink	Device	10 T	200 ng/mL
D01-FYL	Single-Drug Drink Check Test - Fentanyl (FYL)	Drink	Strip	10 T	
D04-FYL	Single-Drug Drink Check Test - Fentanyl (FYL)	Drink	Dip card	10 T	
D02-GHB	Single-Drug Drink Check Test - γ -Hydroxybutyric acid (GHB)	Drink	Device	10 T	10000 ng/mL
D01-GHB	Single-Drug Drink Check Test - γ -Hydroxybutyric acid (GHB)	Drink	Strip	10 T	
D04-GHB	Single-Drug Drink Check Test - γ -Hydroxybutyric acid (GHB)	Drink	Dip card	10 T	
D02-KET	Single-Drug Drink Check Test - Ketamine (KET)	Drink	Device	10 T	1000 ng/mL
D01-KET	Single-Drug Drink Check Test - Ketamine (KET)	Drink	Strip	10 T	
D04-KET	Single-Drug Drink Check Test - Ketamine (KET)	Drink	Dip card	10 T	
D02-MET	Single-Drug Drink Check Test - Methamphetamine (MET)	Drink	Device	10 T	2000 ng/mL
D01-MET	Single-Drug Drink Check Test - Methamphetamine (MET)	Drink	Strip	10 T	
D04-MET	Single-Drug Drink Check Test - Methamphetamine (MET)	Drink	Dip card	10 T	
D02-PCP	Single-Drug Drink Check Test - Phencyclidine (PCP)	Drink	Device	10 T	50 ng/mL
D01-PCP	Single-Drug Drink Check Test - Phencyclidine (PCP)	Drink	Strip	10 T	
D04-PCP	Single-Drug Drink Check Test - Phencyclidine (PCP)	Drink	Dip card	10 T	
D02-SCOP	Single-Drug Drink Check Test - Scopolamine (SCOP)	Drink	Device	10 T	2000 ng/mL
D01-SCOP	Single-Drug Drink Check Test - Scopolamine (SCOP)	Drink	Strip	10 T	
D04-SCOP	Single-Drug Drink Check Test - Scopolamine (SCOP)	Drink	Dip card	10 T	
D02-TML	Single-Drug Drink Check Test - Tramadol (TML)	Drink	Device	10 T	600 ng/mL
D01-TML	Single-Drug Drink Check Test - Tramadol (TML)	Drink	Strip	10 T	
D04-TML	Single-Drug Drink Check Test - Tramadol (TML)	Drink	Dip card	10 T	
D02-ZOL	Single-Drug Drink Check Test - Zolpidem (ZOL)	Drink	Device	10 T	100 ng/mL
D01-ZOL	Single-Drug Drink Check Test - Zolpidem (ZOL)	Drink	Strip	10 T	
D04-ZOL	Single-Drug Drink Check Test - Zolpidem (ZOL)	Drink	Dip card	10 T	
D25-MDT---D95-MDT	Multi-Drug Drink Check Test	Drink	Device	10 T	/
D24-MDT---D94-MDT	Multi-Drug Drink Check Test	Drink	Dip card	10 T	/