

TE5 Vet

Touch Screen Ultrasound System

Simple|Focused|Smart



Simple | Focused | Smart



Simple experience with intuitive workflow

High Definition Touch Screen

State-of-the-art fingertip operation, even with gel-covered gloves, provides simple control and setting optimization at the swipe of a finger.

Gesture-Based Workflow

Gesture controls are the most efficient way to satisfy all clinical functions, and also allow flexibility of user-programming.



Superior performance with focused features

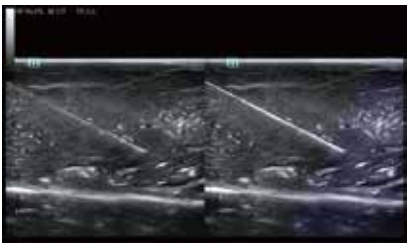
iVocal

Based on Artificial Intelligence voice recognition technology, iVocal allows you to remotely control the system by simple yet extensive voice commands through a wireless microphone, further enhancing ultrasound users' comfort and ergonomics during the entire procedure, supporting Adding, Deleting and Renaming voice commands for user-defined command list.

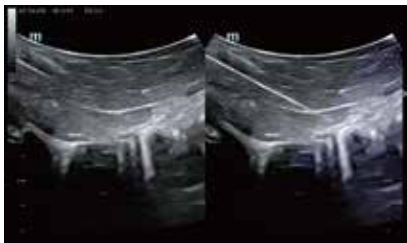


iNeedle⁺

2nd generation needle enhancement technology for easy needle approach to target and enhanced accuracy for guided procedures.



iNeedle⁺ on linear



iNeedle⁺ on convex

Transducer with Programmable Buttons

The L12-3RCs with 3 programmable buttons ensures simple, fast, and convenient control without touching the system, letting you focus more on patient care. The optimally positioned keys can be defined as depth & gain adjustment, freeze & unfreeze, save image & cine, and more.



Smart design with innovative ergonomics

15" touch screen with anti-glare and wide viewing angle

Transducer cable management for cord longevity and ease of use



Built-in battery provides long battery life



Built-in wireless network



Height adjustable smart trolley

