

November 09, 2016

We are YOUR most EFFECTIVE and EFFICIENT Message Delivery & Market Penetration Process



Welcome to **Marketing Empire Solutions**, a premier marketing and sales firm located in the heart of Houston, Texas. Contracted by a wide range of clients, including Fortune 100 & 500 technology, entertainment, financial, service, energy and solar firms, we have a knack for building relationships and offering our client's national & global expansion.

Our Services

Account Management

The most difficult challenge to any business is the identification and acquisition of new customers. With **Marketing Empire Solutions**, your struggle is our niche. We build relationships, loyalty and customer retention with B to C & B to B consumers.

Leadership Training

At **Marketing Empire Solutions**, our biggest investment is into the future leaders of the marketing and sales industry. Leadership development allows for qualified team members to move into branch management positions and offers our clients continued expansion options. We promote organically.

Sales Consulting

Opposed to mass marketing methods, **Marketing Empire Solutions** focuses on a patented algorithmic system combined with an entirely customized and personalized approach. Identifying the proper space and Representing your brand the RIGHT way, with character and integrity is our highest priority.

Direct Marketing & Campaign Development

The BIG question related to any outsourcing process, is knowing who will represent your brand. At **Marketing Empire Solutions**, our professional trained team specializes in direct marketing campaigns with 100% guaranteed ROI. Our eighteen month training process insures consistency throughout the company.

What we do is simple: **we provide solutions.**

A privately owned consulting firm, [Marketing Empire Solutions](#) is a powerful force in the marketing and sales industry. We specialize in outsourced marketing, face to face sales and new customer acquisitions for **Fortune 100 and 500** clients and consider ourselves highly fortunate to represent a portfolio of names such as AT&T, DirectTV, VIVINT, Reliant Energy, GE Solar, ROKU, Lowes, White Rhino Financial, USHA Insurance Samsung, and many more.

Within the structure of our FIVE revenue generating divisions and ONE philanthropic division, [Marketing Empire Solutions](#) is uniquely positioned and internally integrated to offer our customers a customized approach, serviced within a “TURN-KEY” process. Our GLOBAL reach, and exposure to various market spaces, and a diversity of industries, challenges our team to seek solutions beyond the conventional wisdom and practice.

We can offer solutions that cover the full spectrum of your business needs, from Accounting to Health care to Logistics and more. We work with the #1 or #2 company in their respective space.

Outsourcing is a rapidly growing trend within the 21st century and by definition happens when a company hires an external team to improve efficiency, cut costs, or improve the overall quality of work. Marketing Empire Solutions has been outsourced purely for dominating our niche of face to face, relationship-based marketing and sales. We are able to DELIVER our clients increased name-brand recognition and high levels of customer loyalty.

Here at [Marketing Empire Solutions](#), we believe that quality business depends upon employing a team of varying backgrounds, resources, and skills. Our philosophy of 100% internal, merit-based, organic promotions guarantee team members the growth potential to accomplish all personal and professional goals. Our unique process development process insures that our clients are represented by the finest talent. We equip our exceptional team with all of the information and tools necessary to become YOUR expert in the marketing and sales field.

In one GRAND statement: “We are the Waste Management of Marketing”

Chairman PJ Abbott

Wonder what it's like to work at **Marketing Empire Solutions**?

We have a firm teachable core beliefs, that drive our culture and team environment. We believe that with hard work, effort and time, success is inevitable. We emphasize the importance of surrounding yourself with like-minded, ambitious and SERVICE oriented people. We believe, and have created our firm's Management Training Program, from the ideals of promoting team members internally, based on work ethic and performance:

Growth Potential: Finding a company that invests in both the personal and professional development of their people is often a rarity. Here at **Marketing Empire Solutions**, we believe that success is a continuous and conscious effort every day to be better than the day before; and that doesn't mean just being better at work. Growth potential in our firm is unlimited and based solely on work ethic and performance. Our company hiring motto: "We do not hire people to tell them what to do, we hire those who can tell us what we need to do."

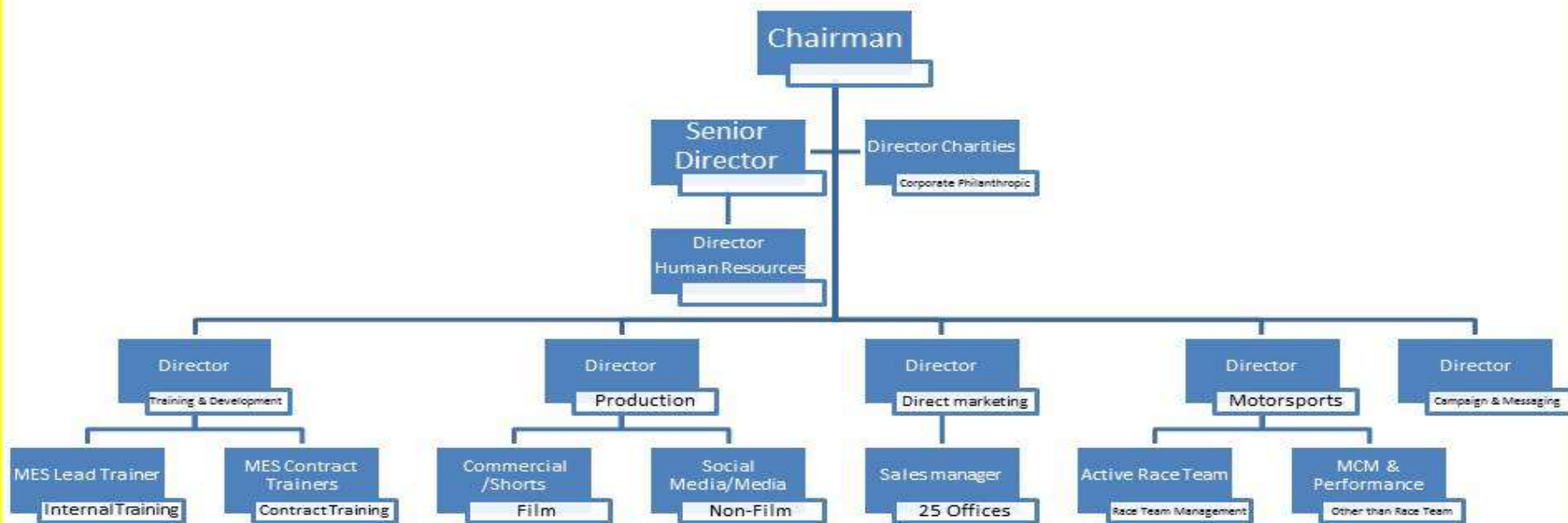
Mentorship: We believe in a philosophy of shared thought and experience, and translate that belief system to our firm's Management Training Program. Upon being hired at Marketing Empire Solutions, each individual is assigned a mentor who's sole focus is to help aid in the initial training and long term professional development. All mentoring is done by team members who have held the position they are coaching, therefore all feedback comes from personal experience and insight. No matter the pedigree or blue chip status of young recruits into the Officer ranks of military service, everyone attend a boot camp and standard training and development program.

Inspiration: Finding motivation can be challenging. When you combine a group of like-minded, ambitious and competitive people, the potential is almost bursting at the seams. These personalities begin to invigorate and influence each other and the positive energy is contagious. We offer inspiration, first, in creating the right team dynamic and secondly, in providing outlets that instill great performance, such as travel, leadership libraries and motivating conference calls. Our training relationships with quality people such as Brian Tracy, Dr. Hank Seitz and Lynn Desert, allow us to offer the inspiration at every level of development, always seeking improvement.

Structured for Maximum IMPACT

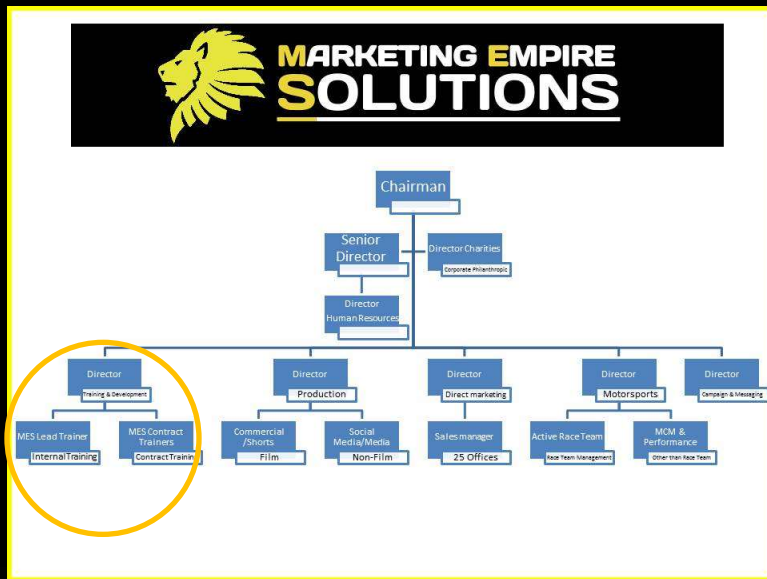


**MARKETING EMPIRE
SOLUTIONS**



Corporate Training Division Dr. Hank Seitz

- Internal
- External
- Contracted



We have developed and implemented a series of training modules from entry level, through DIRECTOR.

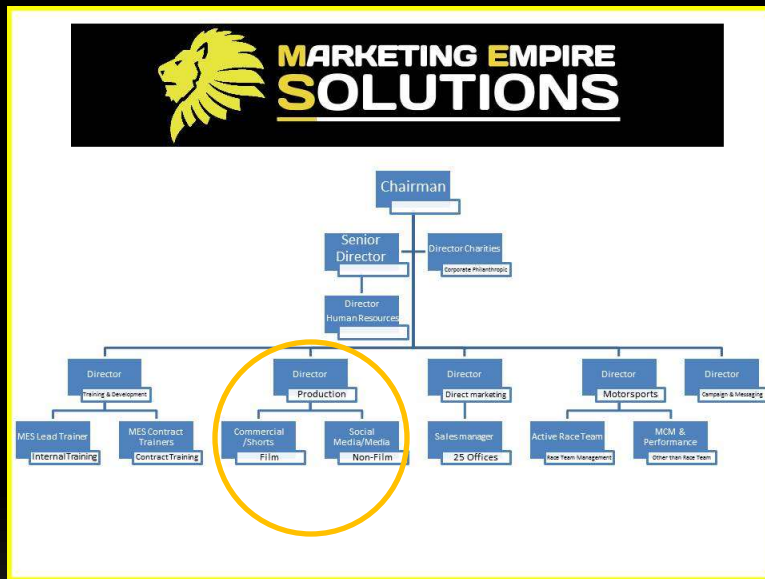
Companies seek our guidance through an outsourced, customized training process in support of sales and marketing teams. TOP level companies seek our counsel and training at every level.

Dr. Hank Seitz was named 2016 America's Business Performance Expert & Top selling author.

Production Division

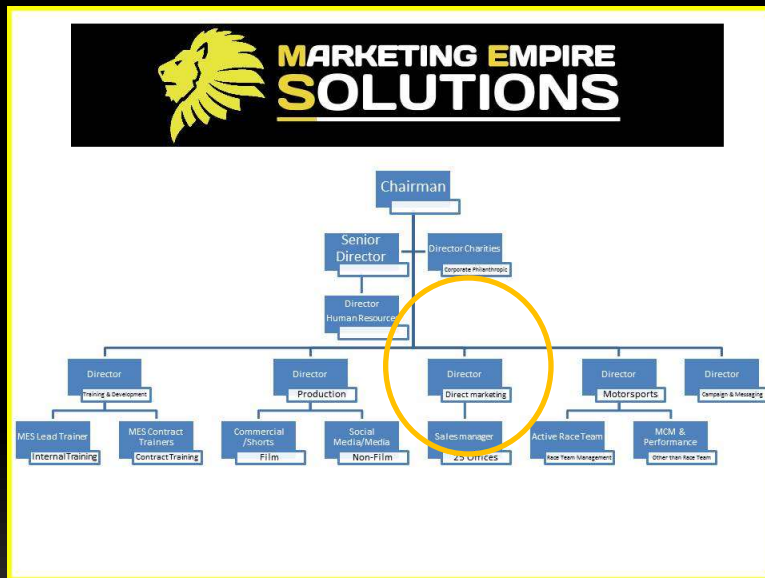
Aja Vickers

- Contracted
- Film
- Non-Film (social media/other)



Direct Marketing Division **Mr. Kevin Tagiobon**

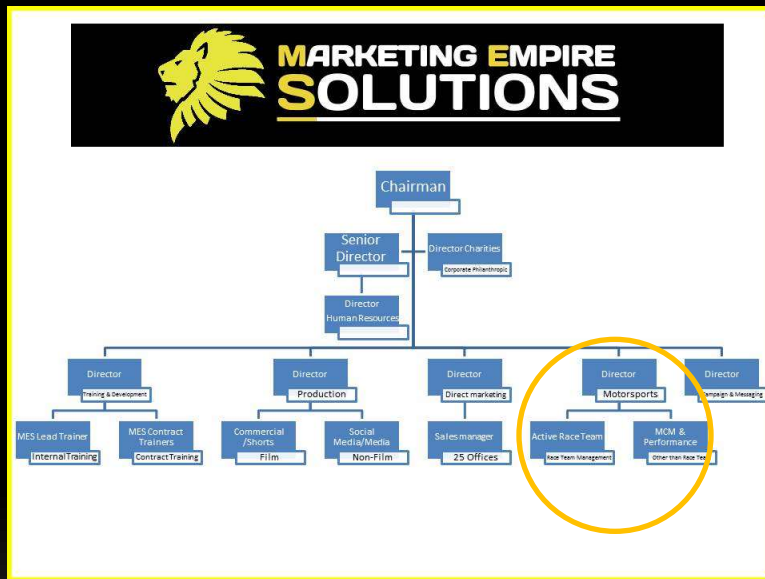
- Passive
- Active
- Call center
- Internet



Kevin leads a solid team of over 300 associates globally, supporting many industries which serve a diversity of markets. Our patented market contact and lead system has destroyed the industry standard, tracking a greater than 87% success rate.

MotorSports Technology & Marketing Division: Chad Hallmark (Pending) & Michael Clevenger

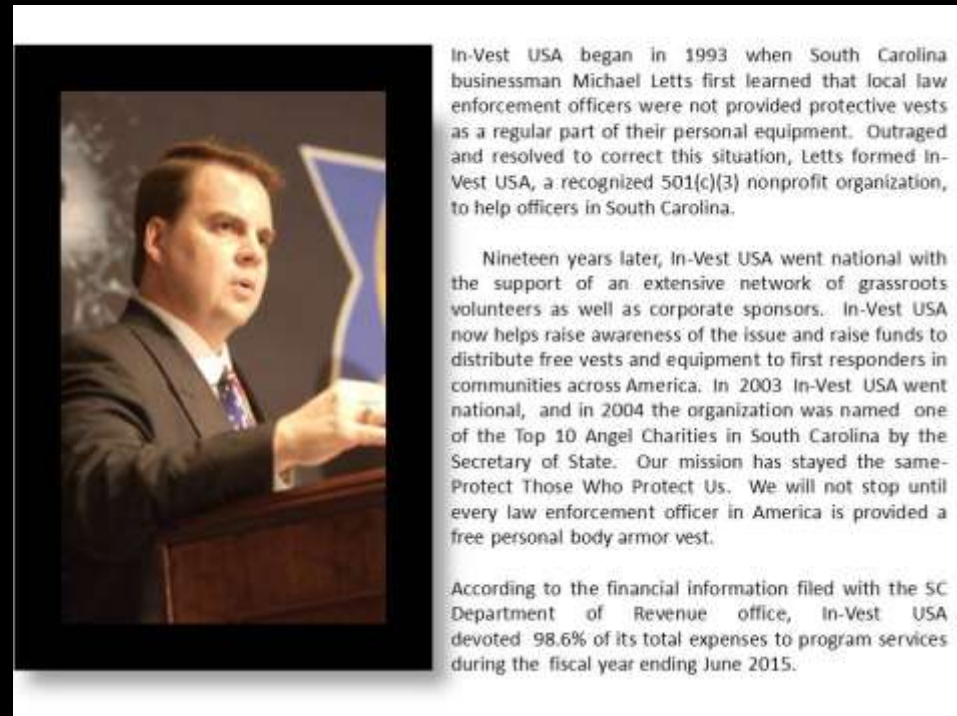
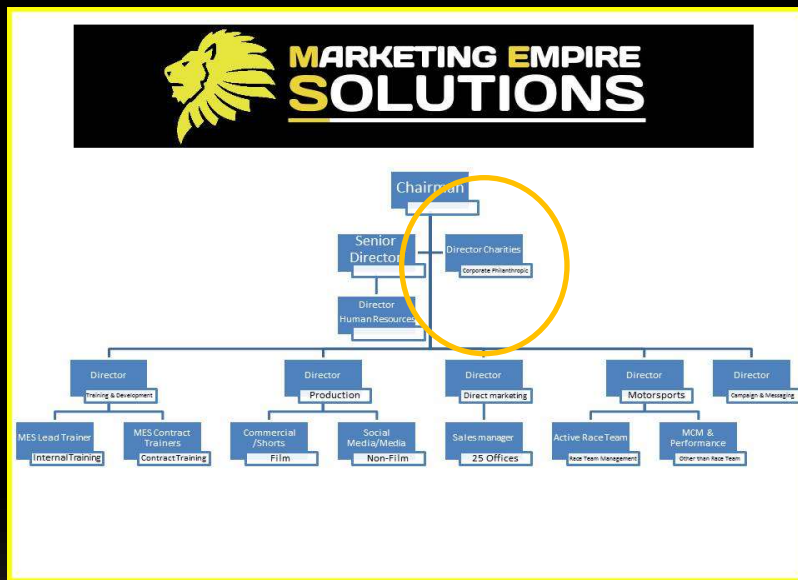
Chad delivers our team real race and driving exposure, combined with various level of corporate executive level experience. Chad will service the active race team, motorsports marketing, motorsport client base and peripheral daily activities.



Michael leads our team in the development of alternative technologies, electric vehicle technology and more. Michael's division and partner companies currently offer 14 models of electric vehicles, from passenger, to work, garbage and even food truck models. Most exciting is the soon to be announced new technology platform servicing Quadra/Paraplegic individuals who will soon have the freedom of complete independence in transportation mobility. Our new technology will be a life changing platform for millions globally!

Director of Charities & Philanthropic programs Division: Sir Michael Letts

-Pending Appointment



Considered to be our greatest impact opportunity to serve and execute a positive influence, the Charities Division coordinates with all providers to offer members of these groups the best pricing for products and services, while committing to a quarterly contribution program.



PJ Abbott

Chairman **Global Marketing Empire Solutions** :

As a former United States Marine Corps Officer and Desert Shield/Desert Storm Veteran, PJ birthed Global Marketing Empire Solutions with a passion for training, developing and leading teams. Coupled with his years as a United States Marine Officer, professional race car driver in multiple series including IndyCar & NASCAR, and his climb within major Fortune 100 Corporate company executive level positions, PJ executes a heightened sense of energy and enthusiasm to our exponentially growing marketing and sales teams within each division. With great interest in philanthropy, he uses his experience and communication skills to promote and support multiple charities ranging from The American Red Cross, InVest-USA.org (offering support to Police, Fire and First Responders since 1996), The Sheriff's Association of Texas, The National Sheriff's Association, Autism Speaks and of course, our very own, Down Syndrome Association of Texas! Along with the rest of our executive team, PJ leads our Marketing Empire Solutions team with high character, poise and determination, and is committed to SERVICE.



Our company **SNAPSHOT:**

Direct Marketing Division: Offers robust tactical platform development, target market analysis, barrier to entry evaluations, summary of success, and resource allocation to execute a strong strategic plan for our clients.

Motorsports Division: Offers a variety of services involved with active race teams, sponsorship, PSA development, messaging, and demographic penetration into targeted market spaces. This division also hosts the performance and technology development team, which continue to push the limits and reside at the edge of leading, groundbreaking, game changing technology development.

Media / Production Division: Offers the very best in any clients needs for film or non film, ranging from simple commercial content development to social media management. This award winning division is most noted for its unique approaches to messaging support. Our social media marketing playbook titled : “ Global reach around the World” has been tagged as the standard for companies using technology marketing platforms.

Training and Development: This division includes some of the world's most talented and respected trainers, authors and business strategists, available for our own internal associate development as well as external engagement at every level of your company needs.

Campaign and Messaging: Offers you the opportunity to accurately create and deliver your message in the proper manner to the RIGHT target market. This team works in multiple area to include merger & acquisitions, new product development, new product launches, and disaster message management.

Charities and Philanthropic Division: Our most valued division, offers the opportunity for every division leader and every team to participate in supporting the coordination of GMES, our technologies, our partners and our clients to support valued and highly regarded charitable organizations & associations.

We Execute Strategies in Disruptive & Unique Technology Spaces



WE CAN HELP!
Faster, easier, more efficient, less logistics, less effort, better protection- **READY NOW!**

100 NAT GUARD TROOPS ACTIVATED IN FLAHEAD

BEFORE 8-12 oz. **AFTER** 25 lbs

It can absorb water and turn to 20KG

Inflatable Bags vs. Traditional Sandbags		
	Inflatable	Sandbags
Easy to store	✓	✗
Lightweight	✓	✗
Easy to transport	✓	✗
Easy to use	✓	✗
Reusable	✓	✗
Environmentally friendly	✓	✗
Cost effective	✓	✗
Efficient performance	✓	✗

Inflatable sandbags use a degradable SAP (super absorbent polymer) to absorb water, then block it. Delivered as a flat one-pound sack, they absorb up to 43 pounds of fresh water in five minutes, forming a dense gel that blocks and redirects water, while forming to each other or adjacent structures for a tighter fit than traditional sandbags. We use an environmentally friendly SAP (super absorbent polymer) for efficient performance. Because they are stored dry, they are cleaner, lighter, more effective and easier to use in the places and times when sandbags are most needed.

At **Global Marketing Empire Solutions:**

WE CREATE VALUE!

We Execute Strategies Focusing on Efficient Customer Service & Interface





MARKETING EMPIRE
SOLUTIONS

“Success has nothing to do with what you gain in life or accomplish for yourself. It’s what you do for others.”

~ Danny Thomas

