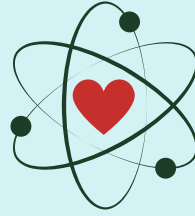




Elisabeth Andrews
Research & Resilience
elisabethandrews.com



BRIDGING
SCIENCE AND
HEART
BECAUSE YOUR
WORK MATTERS.

THE SECRET SEMINAR: RESEARCH LEADERSHIP

Everything they didn't teach you in grad school about winning grants, guiding teams, and managing your time.

Instructor:

Elisabeth Andrews

Research Leadership Coach & Facilitator

"Working with Elisabeth was such a valuable experience. Her trainings helped the NextGen Scientist program participants build both the skills and confidence needed to create clear, engaging and competitive grant proposals."

- Allison Unger, Senior Director of Scientific Affairs, National Dairy Council

This small-group training & coaching program demystifies how to:

- **Write clearly** for reviewers and funders
- **Build collaborative partnerships** beyond your institution
- **Use software** to organize and streamline your process
- **Say "no"** to commitments that don't advance your research goals

Semester or one-year programs available for groups of 5 to 15 faculty members.

"I really wish I had met Elisabeth earlier in my career, when I was new to proposal writing. She would have made my life so much easier and efficient!"

- Francis de los Reyes III, Glenn E. and Phyllis J. Futrell Distinguished Professor, North Carolina State University



WORKSHOP SERIES



Session 1: **Grant Writing Fundamentals** — *Onsite*

Clarify your vision.

This interactive session for all research disciplines helps participants:

- Define their project's purpose and potential impact
- Identify and close the knowledge gap - what's missing and why it matters
- Outline their methodology in clear, accessible language
- Emphasize their specific advantages and demonstrate risk awareness
- Strengthen their case for broader impacts and societal relevance
- Translate complex ideas into a concise, plain-language summary statement

[→ View Sample Slides - Attracting Research Funding](#)

Session 2: **Planning for Positive Change** — *Onsite*

Collaborate for impact.

Build teams that can navigate real-world complexity:

- Use logic models and theory of change to map decisions and dependencies
- Identify who is missing from the planning process, and learn how to invite them
- Align with funders' expectations and evaluation procedures
- Define indicators of success that motivate team members and stakeholders

[→ View Sample Slides - Planning for Change](#)

Session 3: **Reclaim Your Time** — *Online*

Complete the project.

Break the burnout cycle and focus on the most meaningful work:

- Observe how research time can get sacrificed to “administrivia”
- Build skills to deploy a strategic no rather than a reflexive yes
- Identify tools and resources for assistance and delegation
- Explore AI and software for organizing, summarizing, and streamlining
- Clarify personal policies and rhythms that support deep work

[→ View Sample Slides - Reclaim Your Time](#)

***“The grant workshop was totally inspiring! It made me think about my research contribution in a way I had never imagined before.
I would also like to share that my proposal was funded!”***

– Trushna Parekh, Associate Professor, Texas Southern University



COACHING & SUPPORT



1-on-1 Coaching Calls

Cohort members who attend the workshop series have access to 30-min 1:1 coaching calls with Elisabeth to implement workshop content.

"Importantly, Elisabeth involves herself so deeply that the proposals effectively convey our group's sincere motivations and purpose to pursue these projects."

- Jonathan Colbourne, Chair of Environmental Genomics, University of Birmingham (UK)

Structured Writing Sprints

Online focus sessions carve out time for the most important academic writing. We use the Pomodoro method to make fast, efficient progress.

*"Highly recommend the writing sessions with Elisabeth!!!!
It's truly been pivotal with helping me establish a weekly writing habit."*

- Debbie Fetter, Associate Professor, UC Davis

Tools and Resources

Participants gain access to a library of planning tools and templates to streamline teambuilding and proposal preparation.

"Elisabeth has the unique strength to simultaneously conceptualize broadly (in space and time) and facilitate groups to see the path forward."

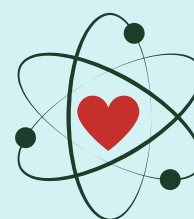
- Beth Plale, Executive Director of the School of Computer and Data Sciences, University of Oregon

ABOUT INSTRUCTOR ELISABETH ANDREWS:

Following her early career as an award-winning magazine writer and editor, Elisabeth has spent the past decade helping academic clients make their most important insights understandable to decision makers. She has helped secure more than \$30 million in research funding, developed science-backed public policy frameworks, edited internationally acclaimed books, and facilitated pioneering multi-institutional projects.



Elisabeth Andrews
Research & Resilience
elisabethandrews.com



**BRIDGING
SCIENCE AND
HEART**
BECAUSE YOUR
WORK MATTERS.