



PORTFOLIO

DOUG COTTRELL



PROPS, DESIGN AND OTHER ART
SELECTED WORKS, 2020-2025
www.dougcottrell.ca



Faux Food: Spatzle & Beef Goulash

Doris and Ivy in the Home, Port Stanley Festival Theatre

Directed by L. Gilroy. Designed by E. Bunnell

- sourced reference images (bottom) for Director and Designer approval, based on script
- sculpted and painted using a variety of materials including polymer clay (spatzle), upholstery foam, air drying foam clay, acrylic paint, decoupage gloss, cut-up plastic greenery from florals
- cut a sheet of glossy vinyl for “gravy”



Faux Food: French Toast with Strawberries

Wrong for Each Other, Port Stanley Festival Theatre

Directed by L. Gilroy. Designed by J. Quinlan

- sliced several kitchen sponges and painted to substitute as French toast with sugar
- sculpted strawberries from polymer clay and spray painted
- fabricated syrup from dish detergent and food colouring



Faux Food: Pizza Slice

Magic Flute, Western Opera

Directed by J. Tarver. Designed by J. Recchia

- sculpted a slice of pizza from air drying foam clay and painted with acrylic paints for teenage dream feast scene



Faux Food: Donuts

On The Air, Port Stanley Festival Theatre

Directed by S. Joynes. Designed by J. Quinlan

- sculpted donuts from air drying foam clay and painted with acrylic paints



Cigars

Magic Flute, Western Opera

Directed by J. Tarver. Designed by J. Recchia

- fabricated cigars from kraft paper and painted with acrylics & added to a vintage box



Bigfoot Plaster Cast

Bigfoot!, Port Stanley Festival Theatre

Directed by M. Furrow. Designed by E. Bunnell

- sourced a file to 3D print based on script reference for a cast of a foot with a visible line
- prepped, filed and sanded PLA print
- painted, weathered and added fake moss as per Designer's notes



Mammoth Tusk and Trilobite Fossil

Perils of Persephone, Port Stanley Festival Theatre

Directed by L. Gilroy. Designed by E. Bunnell

- fabricated a mammoth tusk from a pool noodle with papier mache applied, painted and weathered to match a reference image found online
- Trilobite sculpted onto a rock with polymer clay, painted with acrylics

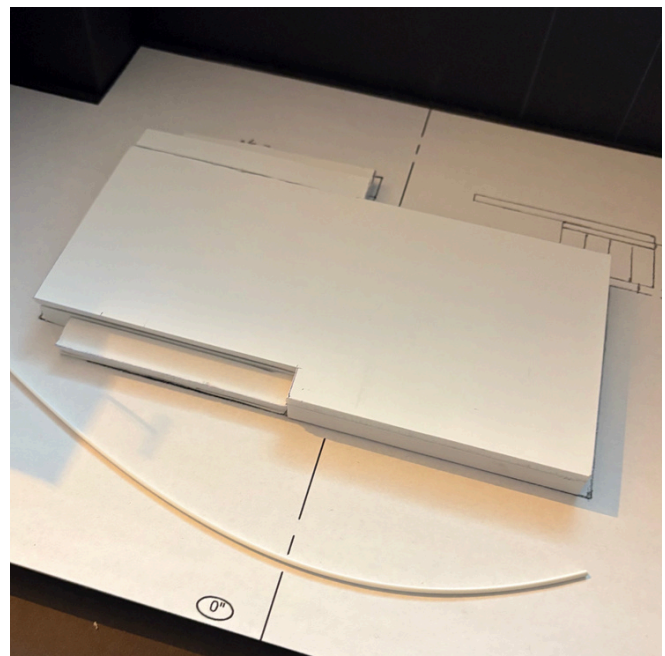
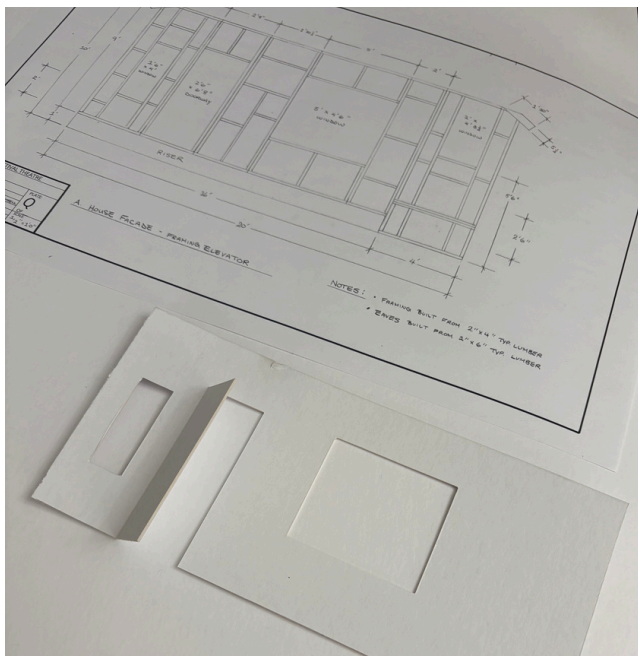


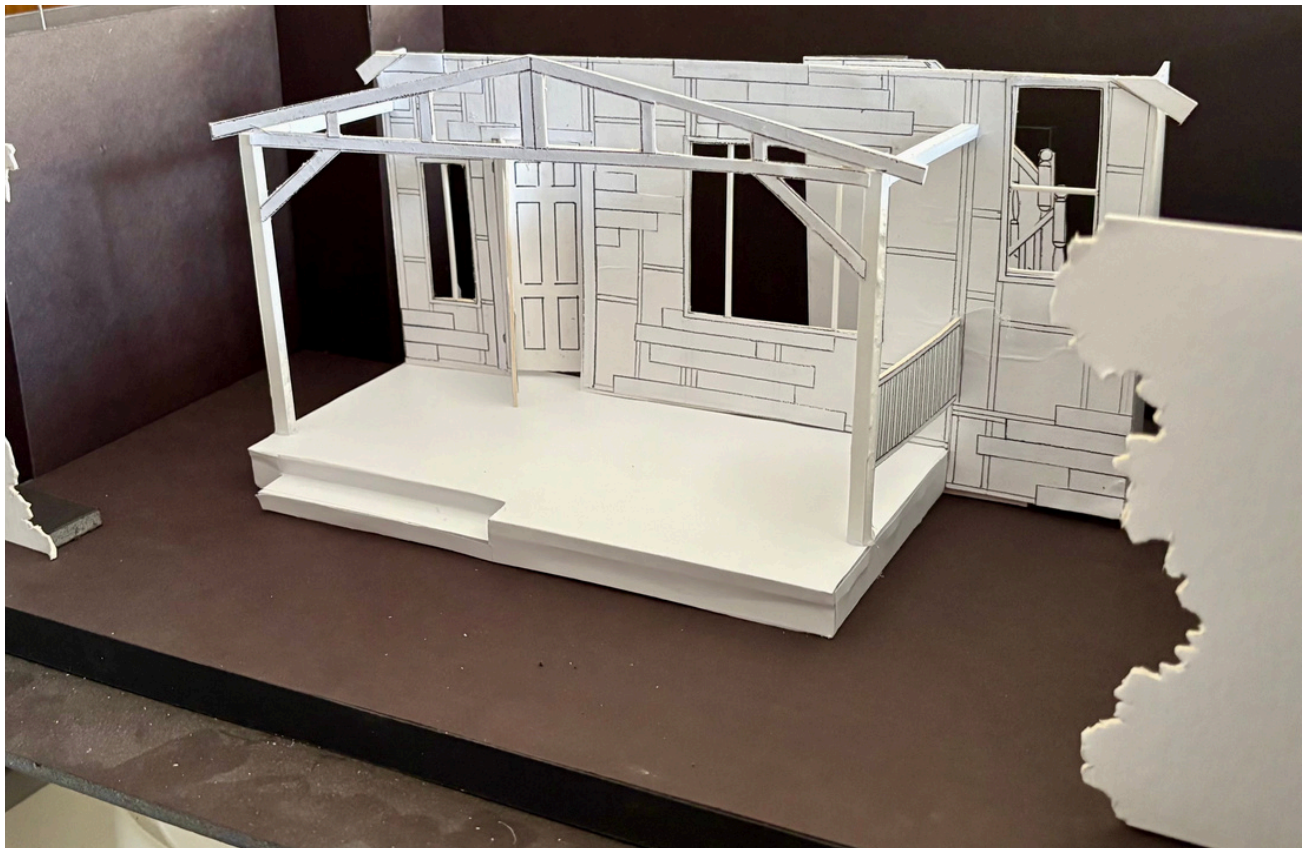
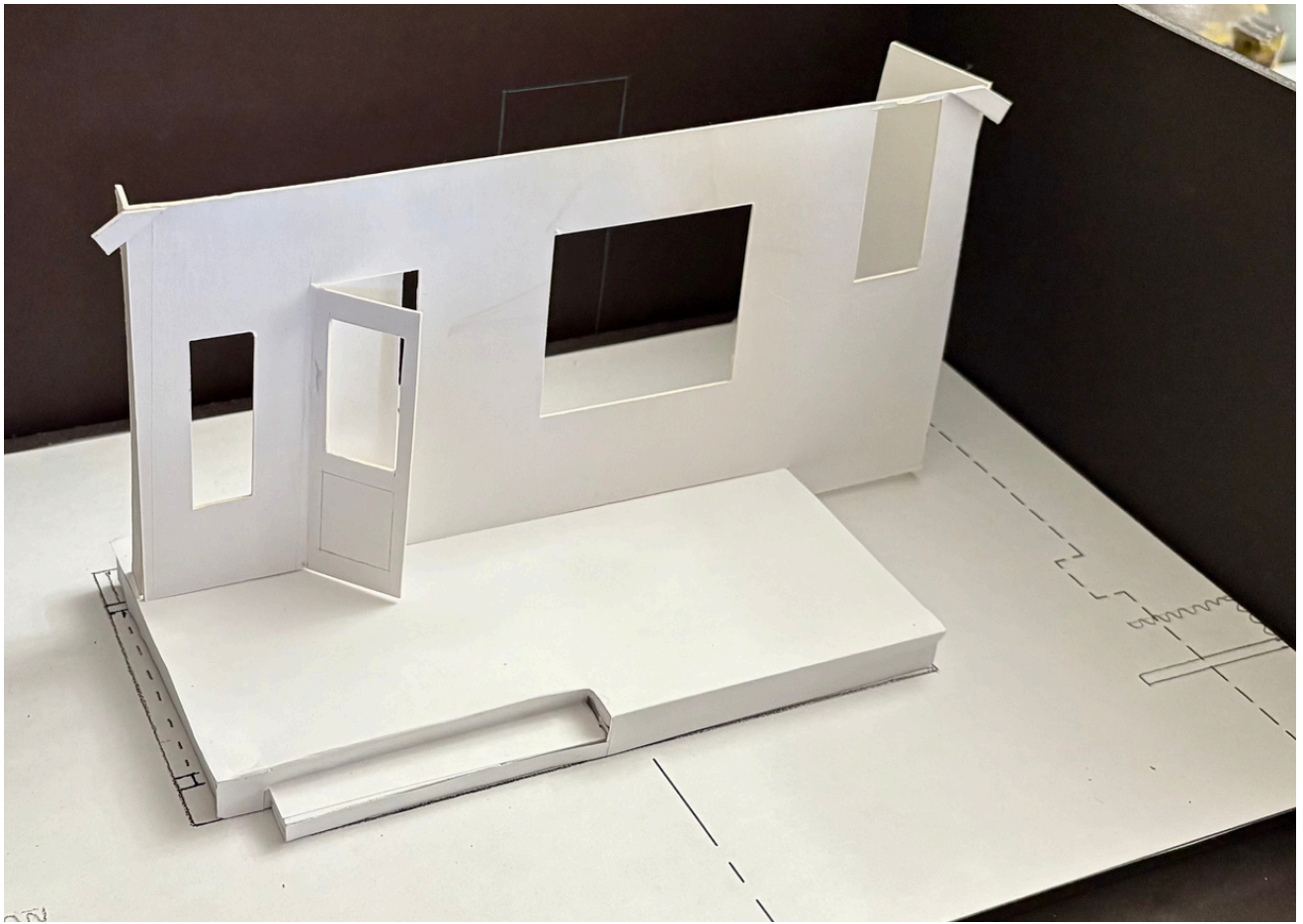
Set Model

goldfish, Port Stanley Festival Theatre

Directed by L. Gilroy. Designed by J. Recchia

- created a white model of the set from matting board, based on floor plans and elevations provided by the Designer





Stained Glass Bottle

The Beaver Club, Port Stanley Festival Theatre

Directed by L. Gilroy. Designed by E. Bunnell

- painted a whimsical translucent flower pattern on a glass decanter with specialty stained glass craft paint, from a concept provided by the Designer (hippy bottle with home made wine inside)



Embellished Scrapbook

The Beaver Club, Port Stanley Festival Theatre

Directed by L. Gilroy. Designed by E. Bunnell

- fabricated a scrapbook based on a large-sized children's activity book, with fabric cover, photos of the cast, text and rhinestone embellishments



Custom Drapery and Pillows

Dei Fleidermaus, Western Opera

Directed by T. Baerg, Designed by J. Recchia

- sourced fabrics with Designer to match design sketch
- drafted pattern, cut and sewed custom drapery treatment (curtains and valance) plus matching throw pillows for a “Bridgerton” inspired set (sheer curtains taken from stock)



Cafe Seating

Wrong for Each Other, Port Stanley Festival Theatre

Directed by L. Gilroy. Designed by J. Quinlan

- recovered chairs and made custom upholstered bench and banquette seating, in collaboration with the carpentry and scenic painting departments who fabricated bases



Casket Upholstery

Liars at a Funeral, Port Stanley Festival Theatre

Directed by J. Tomaino. Designed by E. Bunnell

- collaborated with carpentry and scenic painting departments who refurbished and repainted a prop casket that had been acquired from another theatre
- upholstered casket interior, including base and lid, by hand pleating fabric over wood and upholstery foam for actor comfort as well as design aesthetic, per Designer's request



Non-Theatre: Yoda Full-Sized

Personal Project, a 1:1 scale display inspired by “Yoda” in *Star Wars The Empire Strikes Back*

- prepped and painted 3D printed head, painted eyes (ping pong balls), glued on hair



Non-Theatre: Axe Woves Cosplay

Personal Project, a hobby cosplay inspired by “Axe Woves” in *Star Wars The Mandalorian*

- prepped and painted 3D printed helmet and armour (chest, shoulders, thighs, gauntlets, knees, jet pack, weapon, etc.)
- custom fabricated flight suit, to match screen references, including custom dying fabric



Non-Theatre: General Merrick Cosplay

Personal Project, a cosplay inspired by “General Merrick” in *Star Wars Rogue One*

- custom painted a vacu-formed plastic helmet, and various other components
- custom sewed a flight suit, including the knife pleating detail on the sleeves



Non-Theatre: Baylan Skoll Cosplay

Personal Project, a hobby cosplay inspired by “Baylan Skoll” in *Star Wars Ahsoka*

- drafted a pattern to fabricate soft goods, including leather vest, wool cloak, wool and leather tabards, skirts, etc., sourced all materials to match onscreen references
- prepped and painted 3D printed armour (shoulders, gauntlets, etc.) and weapons, including light-up component in gauntlets
- used spray paints, fabric paint and acrylics for breakdown and weathering

