

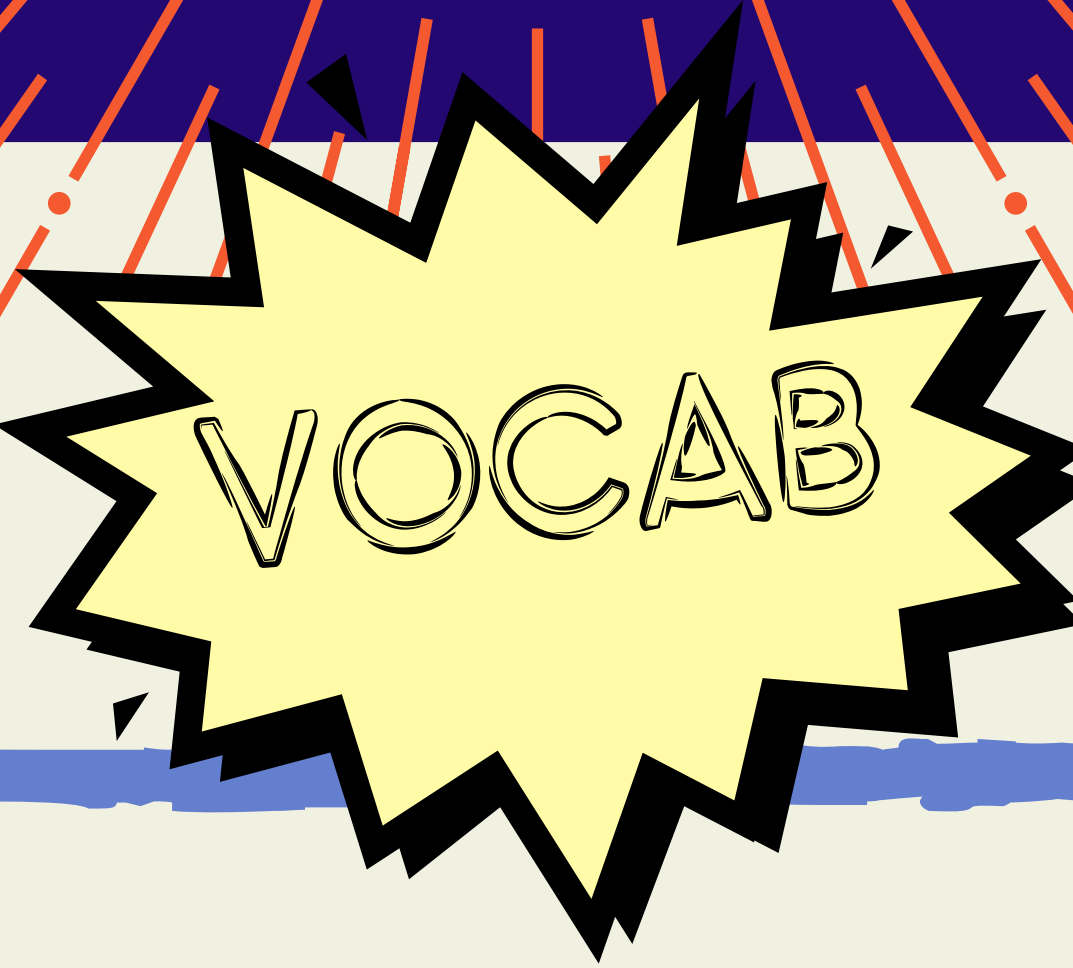


Draw a Mystical World!



2ND - 5TH GRADE
INSTRUCTION
GUIDE

Watch the video at www.parachutearts.com
and on Parachute Studio's
Youtube channel



VOCAB

Imagination: The ability to come up with mental images of something that is not real or to come up with new and creative ideas.

Abiotic factor: A non-living part of an ecosystem. Ex: water, sunlight, climate

Biotic factor: A living part of an ecosystem. Ex: plants, animals (birds), insects (worms)

Ecosystem - All the living (biotic) and non-living (abiotic) things that interact in an area

Landscape: The depiction of natural scenery such as mountains, valleys, trees, rivers, and forests with its elements arranged into a coherent composition.

Vanishing point: The spot on the horizon line to which the receding parallel lines diminish, creating perspective

Horizon line: represents the viewer's eye level, or delineate where the sky meets the ground.

WHAT YOU'LL NEED:

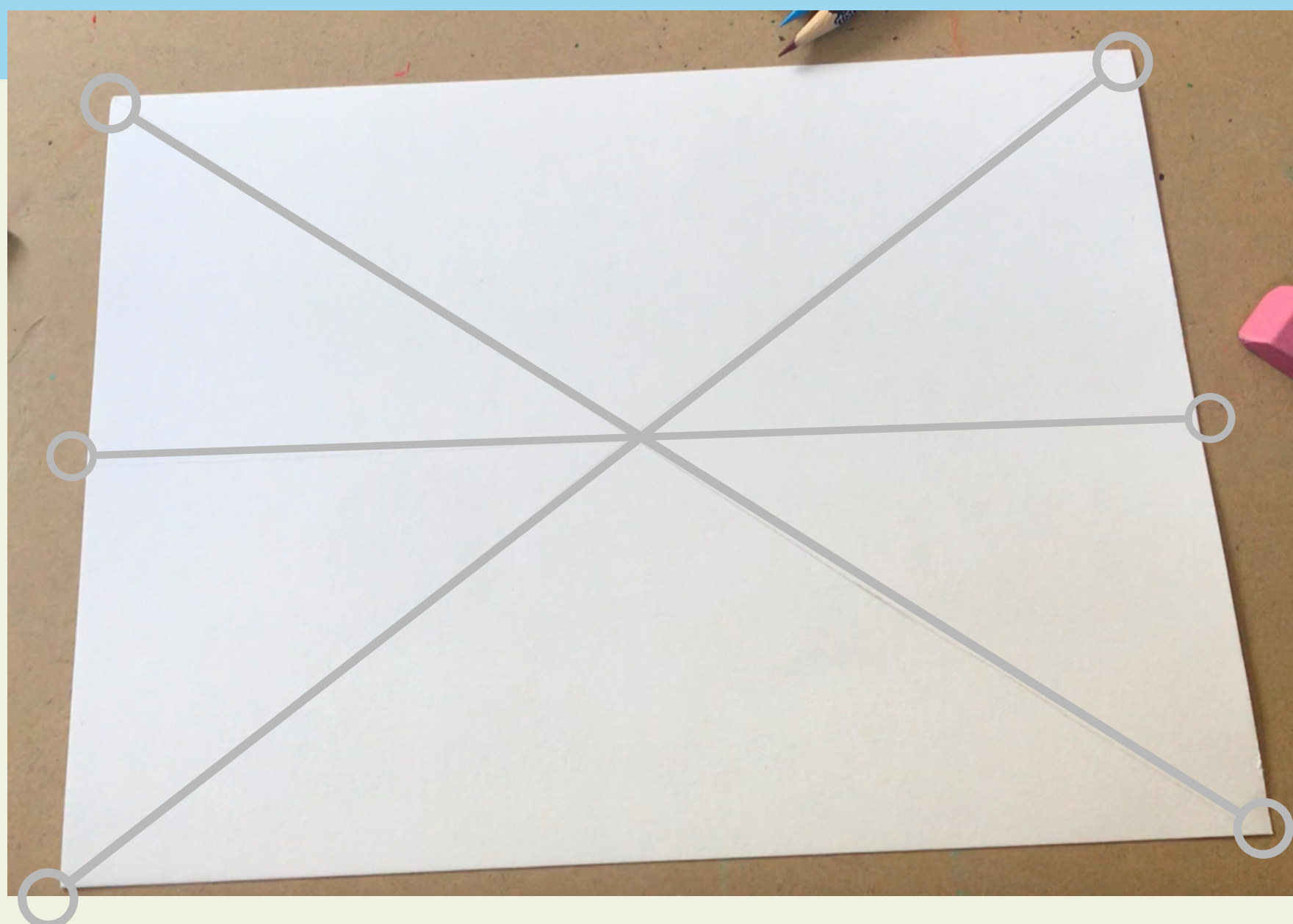
- Regular drawing paper-
- Pencil
- Eraser
- Colored pencils, crayons or oil pastels

DIRECTIONS:

DRAW GUIDELINES

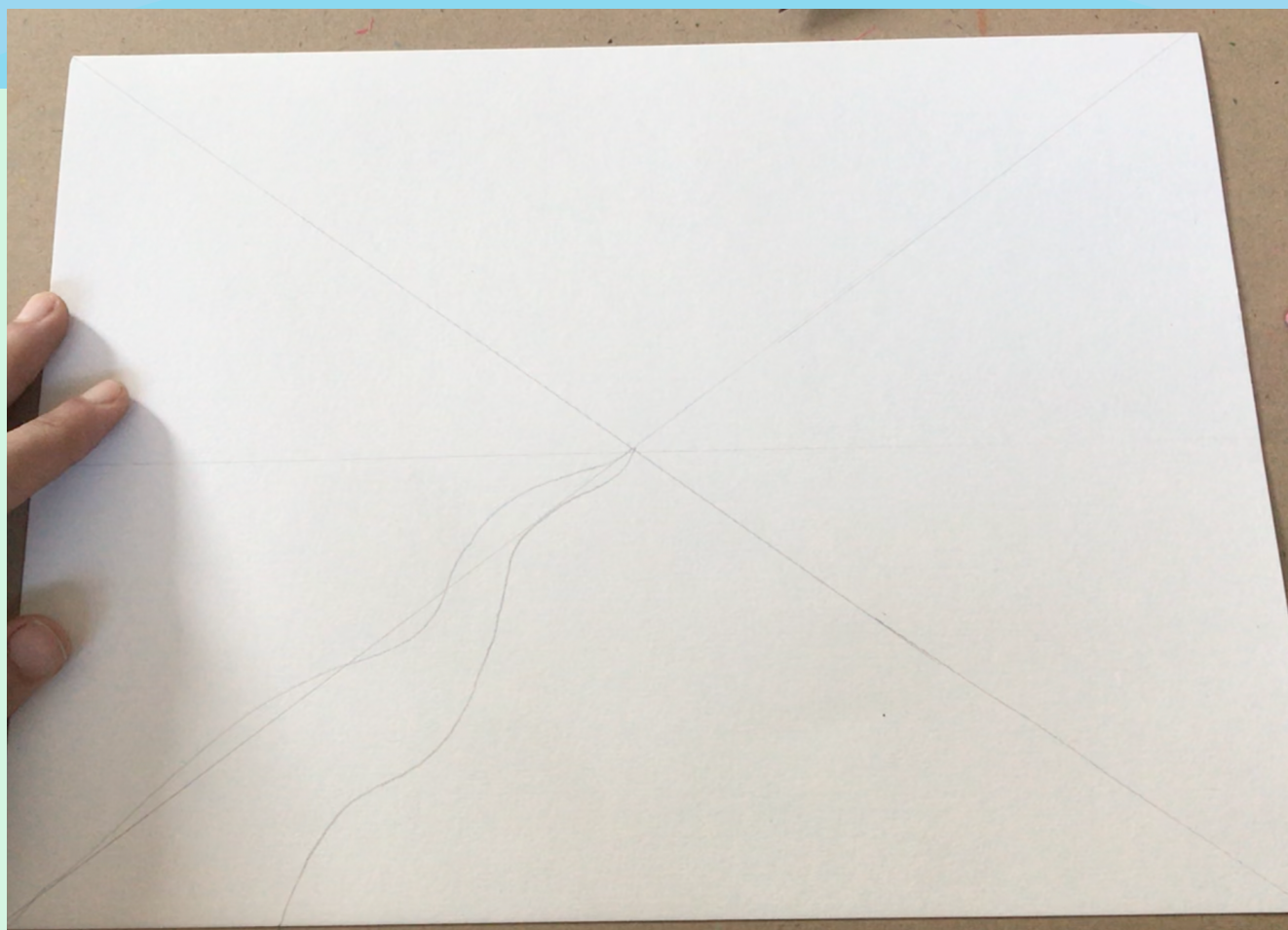
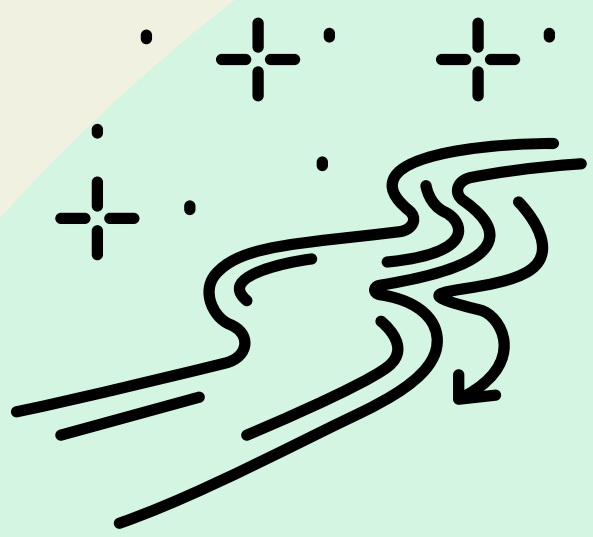
1. Draw a large "X" on your page. Using a ruler or straight edge, draw a straight line from one corner of your page to the opposite corner. Do this one both sides.

2. Draw a horizon line. Using your straight edge, draw a horizon line through the center of your page through the middle of the "X."

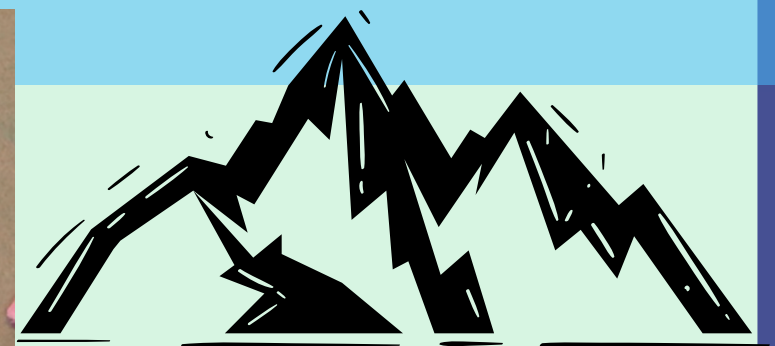
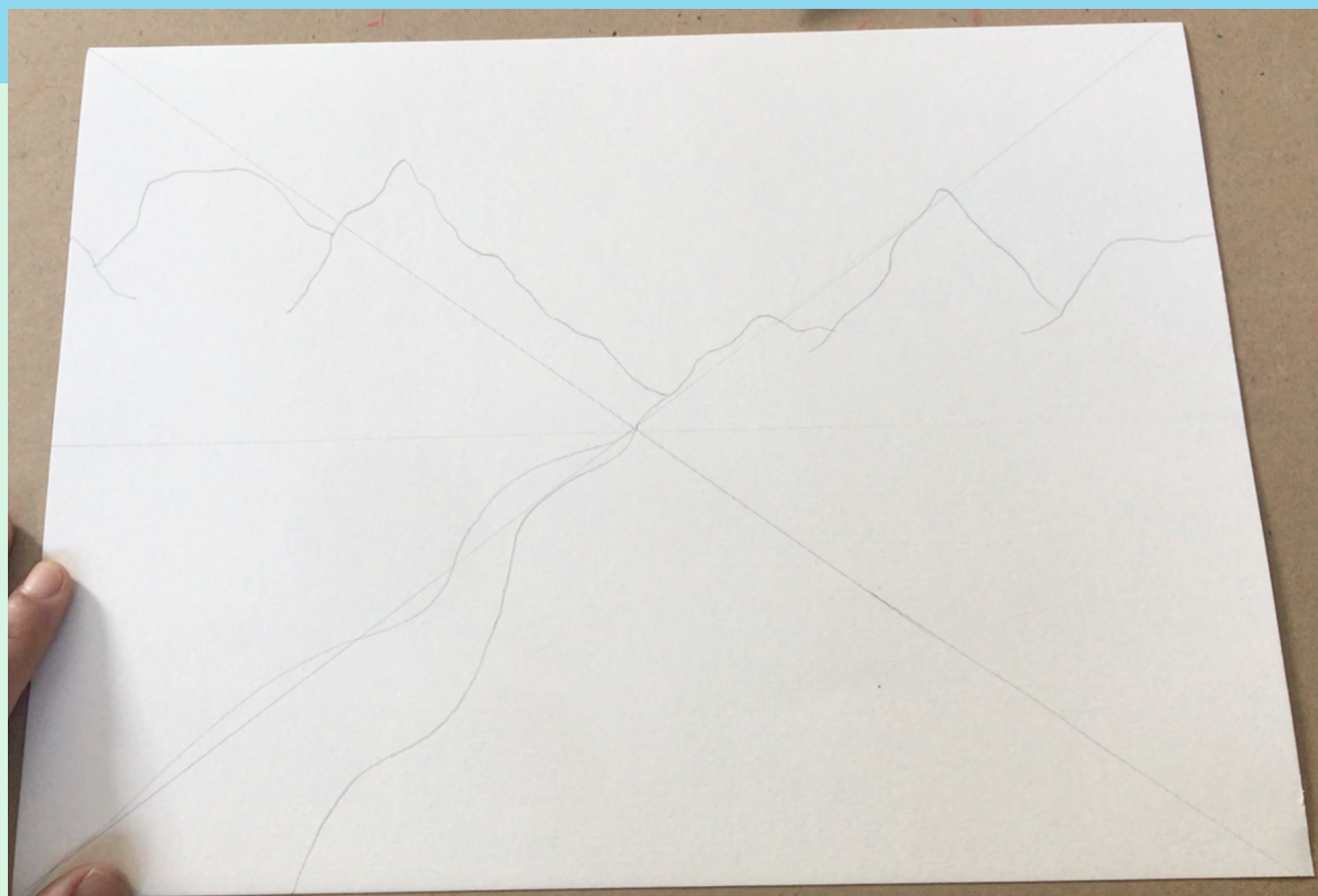


DRAW ABIOTIC FACTORS

2. Draw a road or river. Draw a big curvy line from your vanishing point down to the bottom corner of your paper. Draw another line next to it and make sure the river is bigger at the bottom and smaller at the top. This can be made into a road, river, lava stream or another imaginative element.

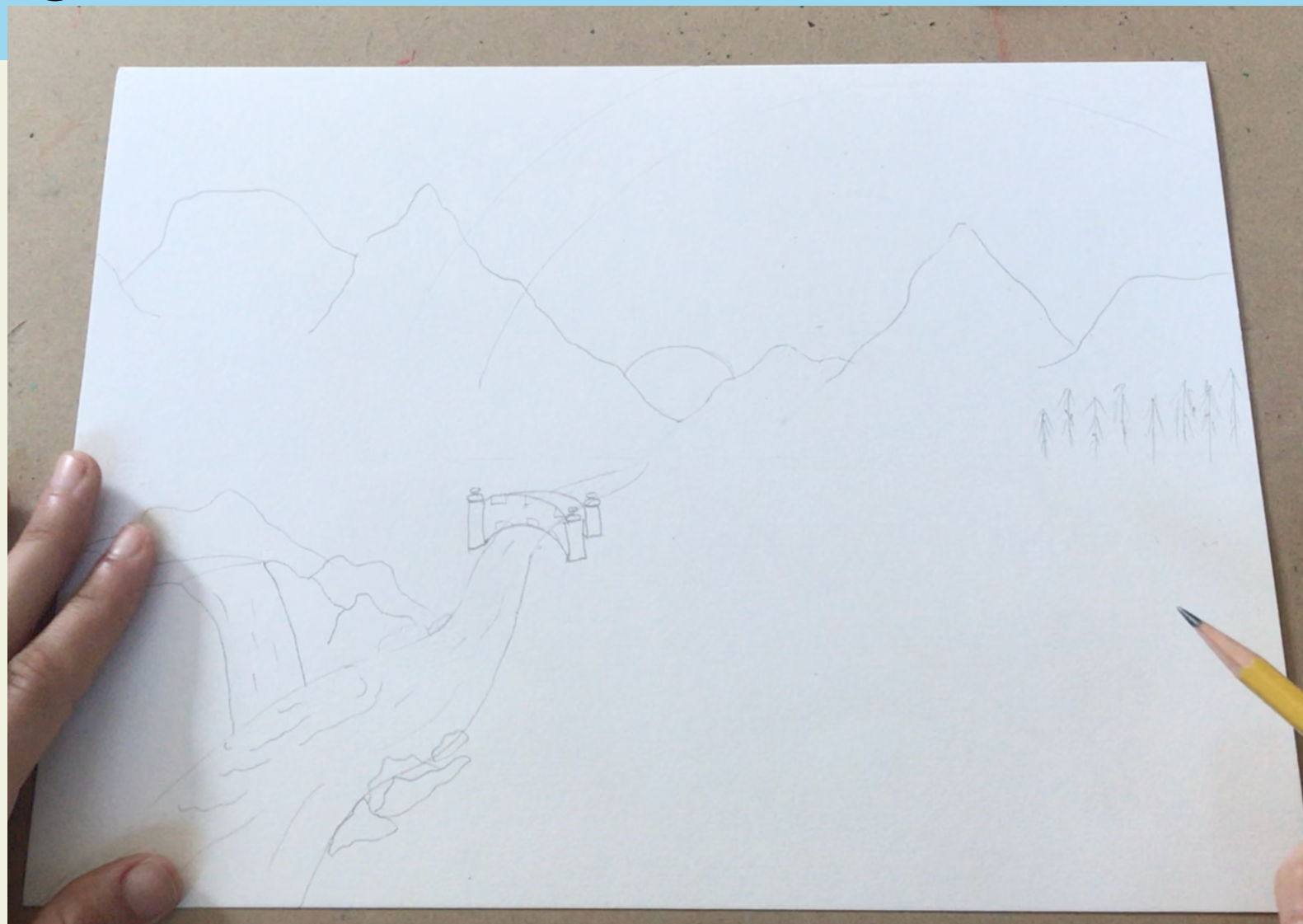


3. Draw the mountains in the backdrop. Draw jagged, triangular lines above your horizon line, getting smaller as they move toward your vanishing point.



DRAW ABIOTIC FACTORS

4. Draw other abiotic factors. Draw some stones, a bridge, a rainbow, a house, or other non-living parts of your world. Consider the story behind each part and how the abiotic factors might interact with the biotic factors.



DRAW BIOTIC FACTORS

5. Draw a fantastical creature. Draw a unicorn or another fantastical creature in the foreground. Make sure to draw where this creature lives or what it eats. If you draw more than one, make sure they are smaller when they are placed closer to the vanishing point.



COLOR IT IN!

6. Color the distant mountains. Make sure your horizon line separates the color of the mountains from the foreground. If you're drawing a distant forest along the horizon line, make sure the trees are bigger along the edge of the page and smaller once they get closer to the vanishing point.

7. Fill the whole page with color. Remember that you can shade the elements of your world by pressing harder or softer on your colored pencils or crayons.

HAVE FUN COLORING!



We can't wait to see your dream worlds!
Make sure to send photos to your teachers, tag
@parachutearts on Instagram
or email heyparachute@gmail.com
with your finished masterpiece!